



जिला स्तरतमिलनाडुके लिएकृषि मौसमसलाहकारबुलेटिन

DISTRICT LEVEL

Agro meteorological Advisory Bulletin for the state of Tamil Nadu Bulletin No. 065 /2017

For the period 0830 IST, 16th August 2017 to
0830 IST, 18th August 2017

Issued on Wednesday, 16th August 2017

Issued by

DDGM, Regional Meteorological Centre, India Meteorological Department,
Chennai in collaboration with TNAU and nine AMFU's of Agro climatic Zones of
the Tamil Nadu state

Agro climatic zones of the state

Sl. No	Agro climatic zone	Districts	Agro met field Unit (AMFU) location
1	Northeastern zone	Kanchipuram, Tiruvallur, Cuddalore Tiruvannamalai, Chennai, Villupuram , Vellore	Chennai
2	Northwestern zone	Dharmapuri, Krishnagiri, Salem and Namakkal	Namakkal
3	Western Zone	Erode, Tiuppur and Coimbatore,	Coimbatore,
4	Cauvery Delta zone	Thanjavur, Nagapattinam, Thiruvarur, Karur, Perambalur, Ariyalur and Tiruchirapalli.	Adudurai
5	Southern zone	Virudhunagar, Tirunelveli and Toothugudi	Kovilpatti
6	South Zone	Pudukottai, Madurai, Dindigul, Theni, Ramanathapuram and Sivagangai	Kannivadi
7	High rainfall zone	Kanyakumari	Pechiparai
8	Hilly zone	Nilgiris	Ooty
9	Coastal Zone	Karaikal and Pondicherry	Karaikal



Past Weather Summary for the period 11.08.17 to 15.08.17 for the State of Tamilnadu & Puducherry

Temperature:

Maximum Temperature of range 29°C – 37°C prevailed over the state. Kodaikanal and Uthagamandalam recorded Maximum temperature range 17°C – 21°C during the period.

Minimum temperature of range 21°C - 29°C prevailed over the State. Kodaikanal and Uthagamandalam recorded Minimum temperature of range 11°C - 13°C during the same period.

Spatial distribution of Rainfall

Spatial distribution of Rainfall	Date	Area
Widespread (Most places)	12.08.17 & 13.08.17	Puducherry
Fairly widespread (Many places)	13.08.17 & 15.08.17	Tamil Nadu
Scattered (Few Places)	11.08.17, 12.08.17 & 14.08.17 15.08.17	Tamil Nadu Puducherry
Isolated (Isolated Places)	--	--
Dry	11.08.17 & 14.08.17	Puducherry

Chief Amounts of Rainfall (in cms):-

11.08.17: Srivilliputhur (Virudhunagar Dist) 8, Neyveli AWS (Cuddalore Dist) 7, Sankaridurg (Salem Dist), Cuddalore (Cuddalore Dist), Devala (Nilgiris Dist), Bhoothapandy (Kanyakumari Dist) 5 each, Vadipatti (Madurai Dist), Ponneri (Tiruvallur Dist), Bhavani (Erode Dist), Mylaudy (Kanyakumari Dist), Aravakurichi (Karur Dist) 4 each, Nilakottai (Dindigul Dist), Kumarapalayam (Namakkal Dist), Nagercoil (Kanyakumari Dist), Panruti (Cuddalore Dist), Surangudi (Toothukudi Dist), Padalur (Perambalur Dist), Ulundurpet (Villupuram Dist) 3 each, Krishnagiri (Krishnagiri Dist), Yelagiri arg (Vellore Dist), Nanguneri (Tirunelveli Dist), Sivagiri (Tirunelveli Dist), Kodumudi (Erode Dist), Penucondapuram (Krishnagiri Dist), Madurai south (Madurai Dist), Thamaraiykkam (Tiruvallur Dist) 2 each, G Bazar (Nilgiris Dist), Sethiathope (Cuddalore Dist), Yercaud (Salem Dist), Watrap (Virudhunagar Dist), Peraiyur (Madurai Dist), Srivaikuntam (Toothukudi Dist), Vilupuram (Villupuram Dist), Mettur (Salem Dist), Hogenekal (Dharmapuri Dist), Virudachalam (Cuddalore Dist), Chatrapatti (odanchatra (Dindigul Dist), Rayakottah (Krishnagiri Dist), Cheranmahadevi (Tirunelveli Dist), Marandahalli (Dharmapuri Dist), Kallakurichi (Villupuram Dist), Attur (Salem Dist), Chinnakalar (Coimbatore Dist), Tirukoilur (Villupuram Dist), Dindigul (Dindigul Dist) 1 each.

12.08.17 : Ilayangudi (Sivaganga Dist) 8, Madukkur (Thanjavur Dist) 7, Ponneri (Tiruvallur Dist) 6, R.s.mangalam (Ramanathapuram Dist), Alangudi (Pudukkottai Dist), Pattukottai (Thanjavur Dist), Cholavaram (Tiruvallur Dist) 5 each, Ambur (Vellore Dist), Mannargudi (Tiruvallur Dist), Pallipattu

(Tiruvallur Dist), Thamaraiykkam (Tiruvallur Dist), Red hills (Tiruvallur Dist), Paramakudi (Ramanathapuram Dist), R.k.pet (Tiruvallur Dist) 4 each, Rayakottah (Krishnagiri Dist), Kamudhi (Ramanathapuram Dist), Orthanad (Thanjavur Dist), Gobichettipalayam (Erode Dist), Ennore AWS (Tiruvallur Dist), Uthangarai (Krishnagiri Dist), Cuddalore (Cuddalore Dist), Adirampatnam (Thanjavur Dist), Thali (Krishnagiri Dist), Karambakudi (Pudukkottai Dist) 3 each, Chinnakalar (Coimbatore Dist), Karaikal (Karaikal Dist), Shoologiri (Krishnagiri Dist), NeeDamangalam (Tiruvarur Dist), Gudiyatham (Vellore Dist), Sirkali (Nagapattinam Dist), Devala (Nilgiris Dist), Chembarabakkam (Tiruvallur Dist), Chennai AP (Kancheepuram Dist), Valangaiman (Tiruvarur Dist), Thiruthuraiipoondi (Tiruvarur Dist), Tiruvarur (Tiruvarur Dist) 2 each, Chengalpattu (Kancheepuram Dist), Melalathur (Vellore Dist), Uthiramerur (Kancheepuram Dist), Nagapattinam (Nagapattinam Dist), Nannilam (Tiruvarur Dist), Kancheepuram (Kancheepuram Dist), Ramanathapuram (Ramanathapuram Dist), Poonamallee (Tiruvallur Dist), Cheyyar (Tiruvannamalai Dist), Sholingur (Vellore Dist), Valparai taluk office (Coimbatore Dist), Polur (Tiruvannamalai Dist), Chennai(N) (Chennai Dist), Kodavasal (Tiruvarur Dist), Valparai pto (Coimbatore Dist), Periyar (Theni Dist), Tirupattur (Vellore Dist), Mayiladuthurai (Nagapattinam Dist), G Bazar (Nilgiris Dist), Naduvattam (Nilgiris Dist), Dharamapuri (Dharmapuri Dist), Peravurani (Thanjavur Dist), Alangayam (Vellore Dist), Mylam AWS (Villupuram Dist), Tirupathur pto (Vellore Dist), Vellore (Vellore Dist) 1 each.

13.08.17 : Polur (Tiruvannamalai Dist) 14, Tindivanam (Villupuram Dist), Tiruvannamalai (Tiruvannamalai Dist), Tirupathur (Sivaganga Dist), Tiruvaiyaru (Thanjavur Dist) 10 each, Airport Madurai (Madurai Dist), Tirupuvanam (Sivaganga Dist) 9 each, Arimalam (Pudukkottai Dist), Kallakurichi (Villupuram Dist), Melalathur (Vellore Dist), Gingee (Villupuram Dist), Chengam (Tiruvannamalai Dist), Mylam AWS (Villupuram Dist) 8 each, Pondicherry (Puducherry Dist), Sethiathope (Cuddalore Dist), Vellore (Vellore Dist), Marakkanam (Villupuram Dist), Papanasam (Thanjavur Dist), Padalur (Perambalur Dist) 7 each, Peravurani (Thanjavur Dist), Ulundurpet (Villupuram Dist), Tirumayam (Pudukkottai Dist), Sathanur Dam (Tiruvannamalai Dist), Tiruvadana (Ramanathapuram Dist) 6 each, Vanur (Villupuram Dist), Pullambadi (Trichy Dist), Tondi (Ramanathapuram Dist), Keeranur (Pudukkottai Dist), Virinjipuram AWS (Vellore Dist), Adirampatnam (Thanjavur Dist), Vallam (Thanjavur Dist), Nannilam (Tiruvarur Dist), Cuddalore (Cuddalore Dist), Alangudi (Pudukkottai Dist), Sankarapuram (Villupuram Dist), Jayamkondam (Ariyalur Dist) 5 each, Vedaranyam (Nagapattinam Dist), Pudukkottai (Pudukkottai Dist), Anaikaranchatram (Kollidam (Nagapattinam Dist), Thanjavur (Thanjavur Dist), Muthupet (Tiruvarur Dist), Needamangalam (Tiruvarur Dist), Perambalur (Perambalur Dist), Gudiyatham (Vellore Dist), Tozhudur (Cuddalore Dist), K.m.koil (Cuddalore Dist), Chettikulam (Perambalur Dist), Thammampatty (Salem Dist), Manamelkudi (Pudukkottai Dist), Perungalur (Pudukkottai Dist), Aduthurai AWS (Thanjavur Dist), Sirkali (Nagapattinam Dist) 4 each, Thanjavur PTO (Thanjavur Dist), Kalavai AWS (Vellore Dist), Rameswaram (Ramanathapuram Dist), Coimbatore south (Coimbatore Dist), Vilupuram (Villupuram Dist), Kadaladi (Ramanathapuram Dist), Thiruchuzhi (Virudhunagar Dist), Devakottai (Sivaganga Dist), Sendamangalam (Namakkal Dist), Vandavasi (Tiruvannamalai Dist), Poonamallee (Tiruvallur Dist), Tiruvarur (Tiruvarur Dist), Venbavur (Perambalur Dist), Tirukattupalli (Thanjavur Dist), Sendurai (Ariyalur Dist), Thuraiyur (Trichy Dist), Chidambaram (Cuddalore Dist) 3 each, Virudhunagar (Virudhunagar Dist), Madurai south (Madurai Dist), Mayiladuthurai (Nagapattinam Dist), Karambakudi (Pudukkottai Dist), Pattukottai (Thanjavur Dist), Chembarabakkam (Tiruvallur Dist), Neyveli AWS (Cuddalore Dist), Maduranthagam (Kancheepuram Dist), Mannargudi (Tiruvarur Dist), Cheyyur (Kancheepuram Dist), Orthanad (Thanjavur Dist), Namakkal (Namakkal Dist), Karaikudi (Sivaganga Dist), Kodavasal (Tiruvarur Dist), Virudachalam (Cuddalore Dist), Thiruthuraiipoondi (Tiruvarur Dist), Musiri (Trichy Dist), Cheyyar (Tiruvannamalai Dist), Omalur (Salem Dist), Vadipatti (Madurai Dist), Mettupatti (Madurai Dist), Panruti (Cuddalore Dist), Illuppur (Pudukkottai Dist), Gandarvakottai (Pudukkottai Dist), Uthangarai (Krishnagiri Dist), Kamudhi

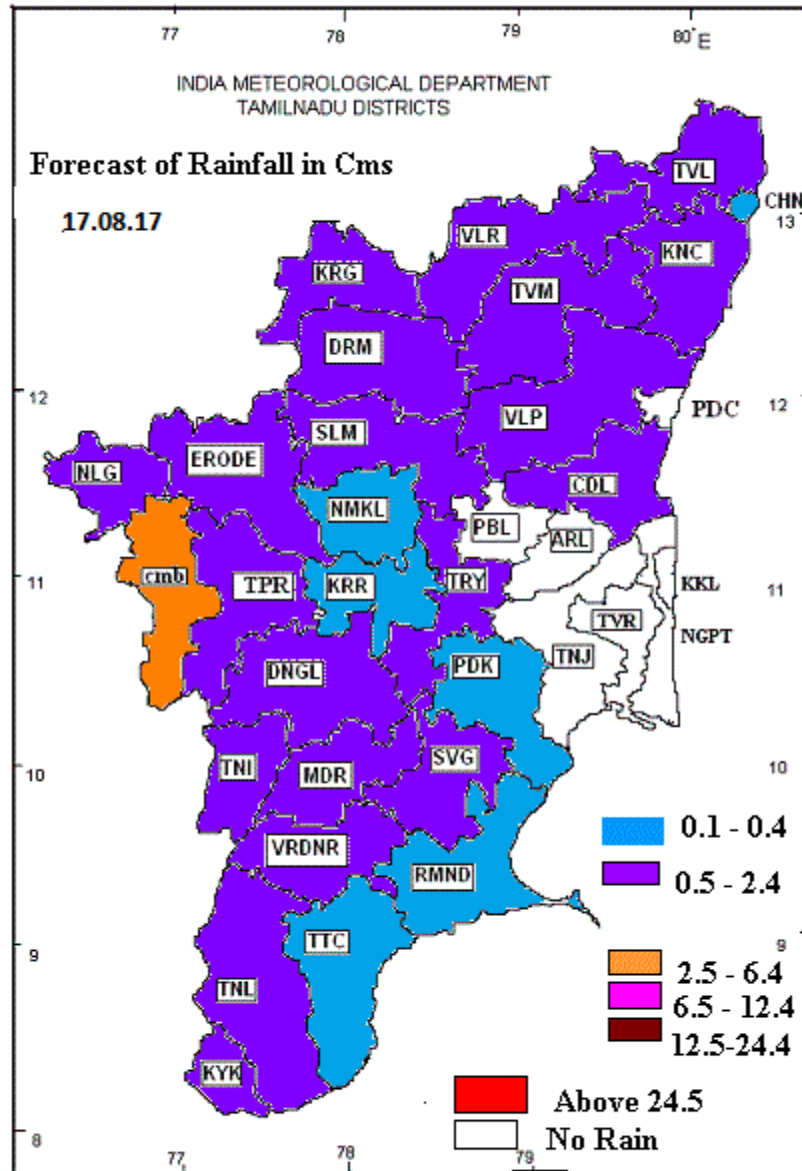
(Ramanathapuram Dist), Chidambaram AWS (Cuddalore Dist), Mayanur (Karur Dist), Thirumanur (Ariyalur Dist), Attur (Salem Dist) 2 each, Arantangi (Pudukkottai Dist), Yercaud (Salem Dist), Madukkur (Thanjavur Dist), Parangipettai (Cuddalore Dist), R.S.Mangalam (Ramanathapuram Dist), Tirupathur pto (Vellore Dist), Yelagiri ARG (Vellore Dist), Tirukoilur (Villupuram Dist), Karaikal (Karaikal Dist), Alangayam (Vellore Dist), Kovilankulam (Virudhunagar Dist), Thiruvaidaimaruthur (Thanjavur Dist), Tirupattur (Vellore Dist), Harur (Dharmapuri Dist), Wallajah (Vellore Dist), Chittampatti (Madurai Dist), Ambur (Vellore Dist), Ariyalur (Ariyalur Dist), Srimushnam (Cuddalore Dist), Vedasandur (Dindigul Dist), Kulithalai (Karur Dist), Salem (Salem Dist), Paramakudi (Ramanathapuram Dist), Lalgudi (Trichy Dist), Dharmapuri PTO (Dharmapuri Dist), Thathiengrpet (Trichy Dist), Coimbatore AWS (Coimbatore Dist), Mahabalipuram (Kancheepuram Dist), Illayangudi (Sivaganga Dist), Kumbakonam (Thanjavur Dist), Manapparai (Trichy Dist), Kamatchipuram (Dindigul Dist), Pandavaiyar head (Tiruvarur Dist), Pochampalli (Krishnagiri Dist), Pamban (Ramanathapuram Dist), Marungapuri (Trichy Dist), Dharmapuri (Dharmapuri Dist), Samayapuram (Trichy Dist), Tirumangalam (Madurai Dist), Ramanathapuram (Ramanathapuram Dist), Tiruchirappalli AP (Trichy Dist), Poondi (Tiruvallur Dist), Thogamalai (Karur Dist), Paiyur AWS (Krishnagiri Dist), Paramathivelur (Namakkal Dist), Arani (Tiruvannamalai Dist), Thuvakudi IMTI (Trichy Dist), Trp town (Trichy Dist), Aruppukottai (Virudhunagar Dist), Kaveripakkam (Vellore Dist), Grand anaicut (Thanjavur Dist), Natham (Dindigul Dist), Melur (Madurai Dist), Valangaiman (Tiruvarur Dist), Dindigul ARG (Dindigul Dist), Vazhapadi (Salem Dist), Vaniaymbadi (Vellore Dist), Kelambakkam (Kancheepuram Dist), Panchapatti (Karur Dist) 1 each.

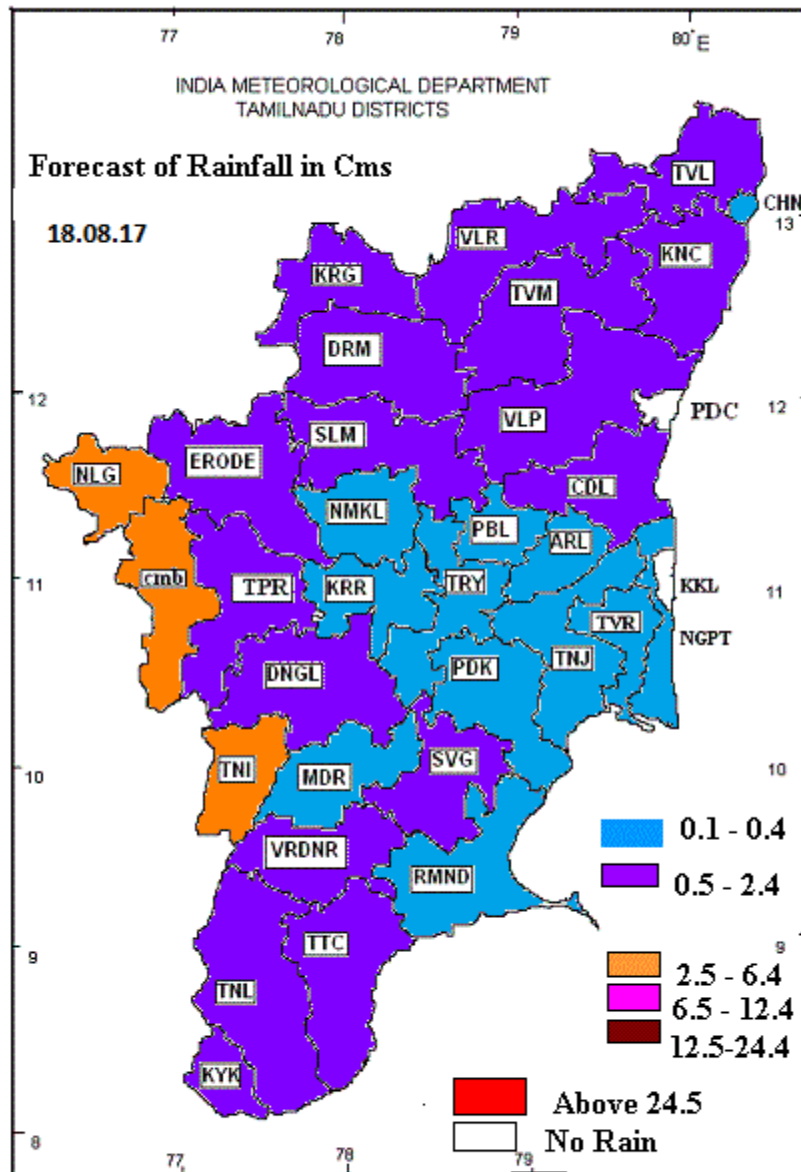
14.08.17 : Mettupalayam (Coimbatore Dist) 6, Kolapakkam ARG (Kancheepuram Dist) 5, Uthiramerur (Kancheepuram Dist), Tirumangalam (Madurai Dist) 4 each, Kancheepuram (Kancheepuram Dist), Alangayam (Vellore Dist), Tirupuvanam (Sivaganga Dist), Sriperumbudur (Kancheepuram Dist) 3 each, Rameswaram (Ramanathapuram Dist), Chembarabakkam (Tiruvallur Dist), Anna University ARG (Chennai Dist), Gingee (Villupuram Dist) 2 each, Anna University (Chennai Dist), Chengalpattu (Kancheepuram Dist), Sendamangalam (Namakkal Dist), Tondi (Ramanathapuram Dist), Satyabama University ARG (Kancheepuram Dist), Melur (Madurai Dist), Vedaranyam (Nagapattinam Dist), Rasipuram (Namakkal Dist), Pappireddipatti (Dharmapuri Dist), Kelambakkam (Kancheepuram Dist), Penucondapuram (Krishnagiri Dist), Airport Madurai (Madurai Dist), Wallajah (Vellore Dist), Chennai(N) (Chennai Dist), Pochampalli (Krishnagiri Dist), Madurai south (Madurai Dist), Barur (Krishnagiri Dist), Chittampatti (Madurai Dist), Sathanur Dam (Tiruvannamalai Dist) 1 each.

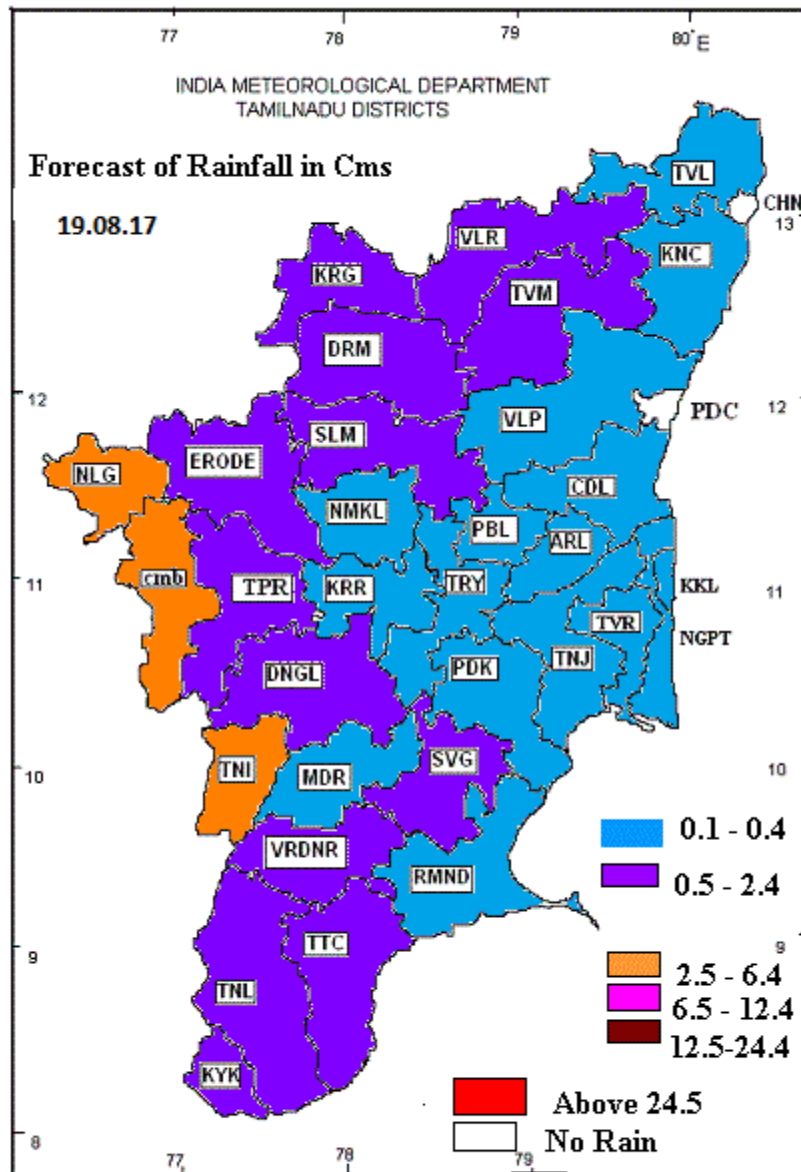
15.08.17 : Kancheepuram (Kancheepuram Dist), Thammampatty (Salem Dist) 11 each, Denkanikottai (Krishnagiri Dist), Perungalur (Pudukkottai Dist) 10 each, Sivaganga (Sivaganga Dist), Anjatti (Krishnagiri Dist) 9 each, Pudukkottai (Pudukkottai Dist) 8, Panchapatti (Karur Dist), Harur (Dharmapuri Dist), Vallam (Thanjavur Dist), Madukkur (Thanjavur Dist), Pattukottai (Thanjavur Dist), Karaikudi (Sivaganga Dist), Aruppukottai (Virudhunagar Dist), Kovilankulam (Virudhunagar Dist) 7 each, Chettikulam (Perambalur Dist), Marandahalli (Dharmapuri Dist), Thogamalai (Karur Dist), Mulanur (Tiruppur Dist), Red hills (Tiruvallur Dist), Chengam (Tiruvannamalai Dist), Rayakottah (Krishnagiri Dist), Palacode (Dharmapuri Dist), Yelagiri arg (Vellore Dist), Thalavadi (Erode Dist) 6 each, Mettupatti (Madurai Dist), Krishnagiri (Krishnagiri Dist), Pochampalli (Krishnagiri Dist), Attur (Salem Dist), Poondi (Tiruvallur Dist), Lalgudi (Trichy Dist), Pullambadi (Trichy Dist), Mayanur (Karur Dist), Vandavasi (Tiruvannamalai Dist), Natham (Dindigul Dist), Shoolagiri (Krishnagiri Dist), Karambakudi (Pudukkottai Dist), Arimalam (Pudukkottai Dist), Yercaud (Salem Dist), Thali (Krishnagiri Dist) 5 each, Aravakurichi (Karur Dist), Venbavur (Perambalur Dist), Keeranur (Pudukkottai Dist), Thamaraipakkam (Tiruvallur Dist), Dharamapuri (Dharmapuri Dist), Barur (Krishnagiri Dist), Sathanur Dam (Tiruvannamalai Dist), Penucondapuram (Krishnagiri Dist), Kadavur (Karur Dist), Vazhapadi (Salem Dist), Virudhunagar (Virudhunagar Dist) 4 each,

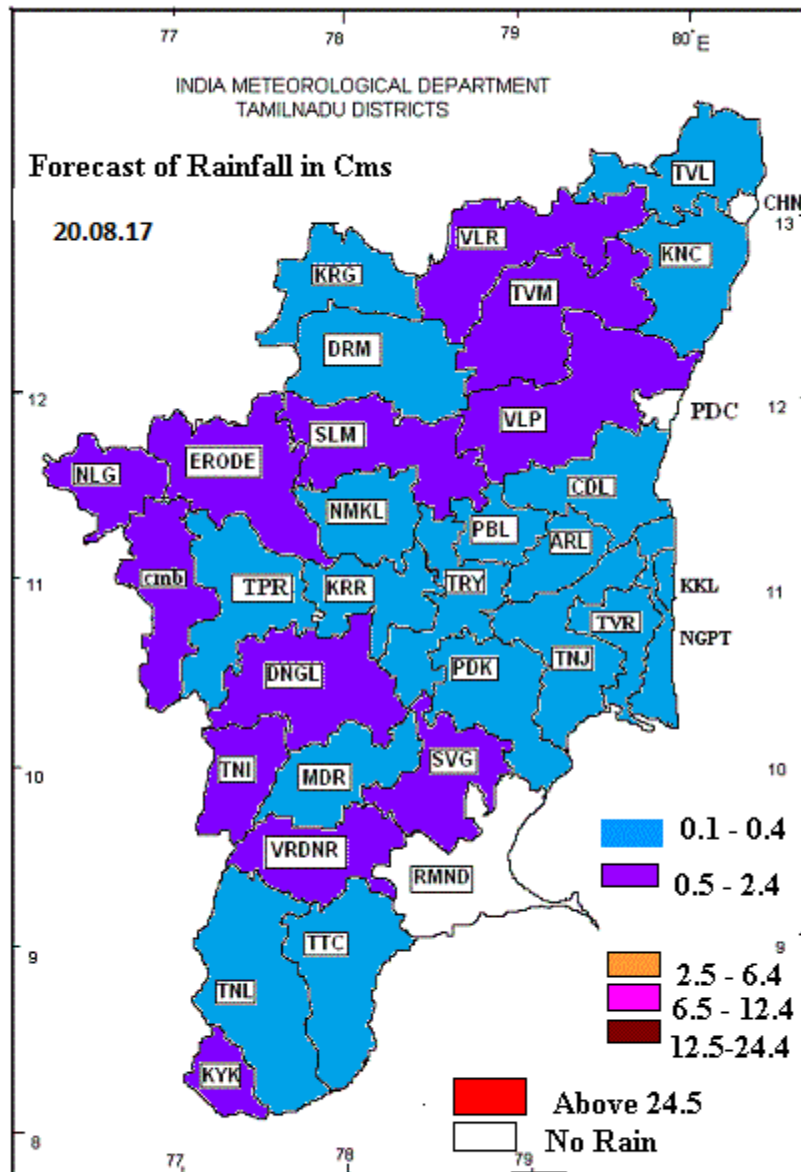
Virudunagar AWS (Virudhunagar Dist), Paiyur AWS (Krishnagiri Dist), Arantangi (Pudukkottai Dist), Madurai south (Madurai Dist), Dindigul (Dindigul Dist), Pappireddipatti (Dharmapuri Dist), Hosur (Krishnagiri Dist), Andipatti (Theni Dist), Tirupattur (Vellore Dist), Omalur (Salem Dist), Tirumangalam (Madurai Dist), Kamatchipuram (Dindigul Dist), Alangudi (Pudukkottai Dist), Gandarvakottai (Pudukkottai Dist), Padalur (Perambalur Dist), Kvk kattukuppam arg (Kancheepuram Dist), Cholavaram (Tiruvallur Dist), Tirumayam (Pudukkottai Dist), Manapparai (Trichy Dist), Tiruvannamalai (Tiruvannamalai Dist), Marungapuri (Trichy Dist), Tozhudur (Cuddalore Dist) 3 each, Uthangarai (Krishnagiri Dist), K.m.koil (Cuddalore Dist), Maduranthagam (Kancheepuram Dist), Mangalapuram (Namakkal Dist), Mettur (Salem Dist), JayamkonDam (Ariyalur Dist), Thuraiyur (Trichy Dist), Kodaikanal (Dindigul Dist), Salem (Salem Dist), Airport Madurai (Madurai Dist), Alangayam (Vellore Dist), Kangeyam (Tiruppur Dist), Vaniyambadi (Vellore Dist), Sivakasi (Virudhunagar Dist), Polur (Tiruvannamalai Dist), Sattur (Virudhunagar Dist), Rameswaram (Ramanathapuram Dist), Melalathur (Vellore Dist), Vadipatti (Madurai Dist), Perambalur (Perambalur Dist), Madavaram AWS (Tiruvallur Dist), Grand anaicut (Thanjavur Dist), Chatrapatti (odanchatra (Dindigul Dist), Thiruthuraiipoondi (Tiruvarur Dist), Kolapakkam arg (Kancheepuram Dist), Chengalpattu (Kancheepuram Dist), Illuppur (Pudukkottai Dist), Pamban (Ramanathapuram Dist), Cheyyar (Tiruvannamalai Dist), Bhavanisagar (Erode Dist), Tirupathur (Sivaganga Dist), Kalavai AWS (Vellore Dist), Sankarapuram (Villupuram Dist), Tirupuvanam (Sivaganga Dist), Kallakurichi (Villupuram Dist), Chinnakalar (Coimbatore Dist), Parangipettai (Cuddalore Dist), Avinasi (Tiruppur Dist), Gudiyatham (Vellore Dist) 2 each, Viralimalai (Pudukkottai Dist), Dharmapuri pto (Dharmapuri Dist), Naduvattam (Nilgiris Dist), Tiruvallur (Tiruvallur Dist), Pandavaiyar head (Tiruvarur Dist), Pennagaram (Dharmapuri Dist), Peravurani (Thanjavur Dist), Thuvakudi IMTI (Trichy Dist), Uthiramerur (Kancheepuram Dist), Papanasam (Thanjavur Dist), Ambur (Vellore Dist), Vedasandur (Dindigul Dist), Sethiathope (Cuddalore Dist), ChiDambaram AWS (Cuddalore Dist), Coonoor pto (Nilgiris Dist), Bhavani (Erode Dist), ChiDambaram (Cuddalore Dist), Pondicherry (Puducherry Dist), Karur (Karur Dist), Peraiyur (Madurai Dist), K bridge (Nilgiris Dist), Periyakulam AWS (Theni Dist), Periyakulam (Theni Dist), Tiruchirappalli AP (Trichy Dist), Rasipuram (Namakkal Dist), Sholavandan (Madurai Dist), Gobichettipalayam (Erode Dist), Uthagamandalam AWS (Nilgiris Dist), Kumbakonam (Thanjavur Dist), Thanjavur pto (Thanjavur Dist), Gingee (Villupuram Dist), Musiri (Trichy Dist), Orthanad (Thanjavur Dist), Kulithalai (Karur Dist), Sankaridurg (Salem Dist), Tiruttani (Tiruvallur Dist), Samayapuram (Trichy Dist), Tindivanam (Villupuram Dist), Watrap (Virudhunagar Dist) 1 each.

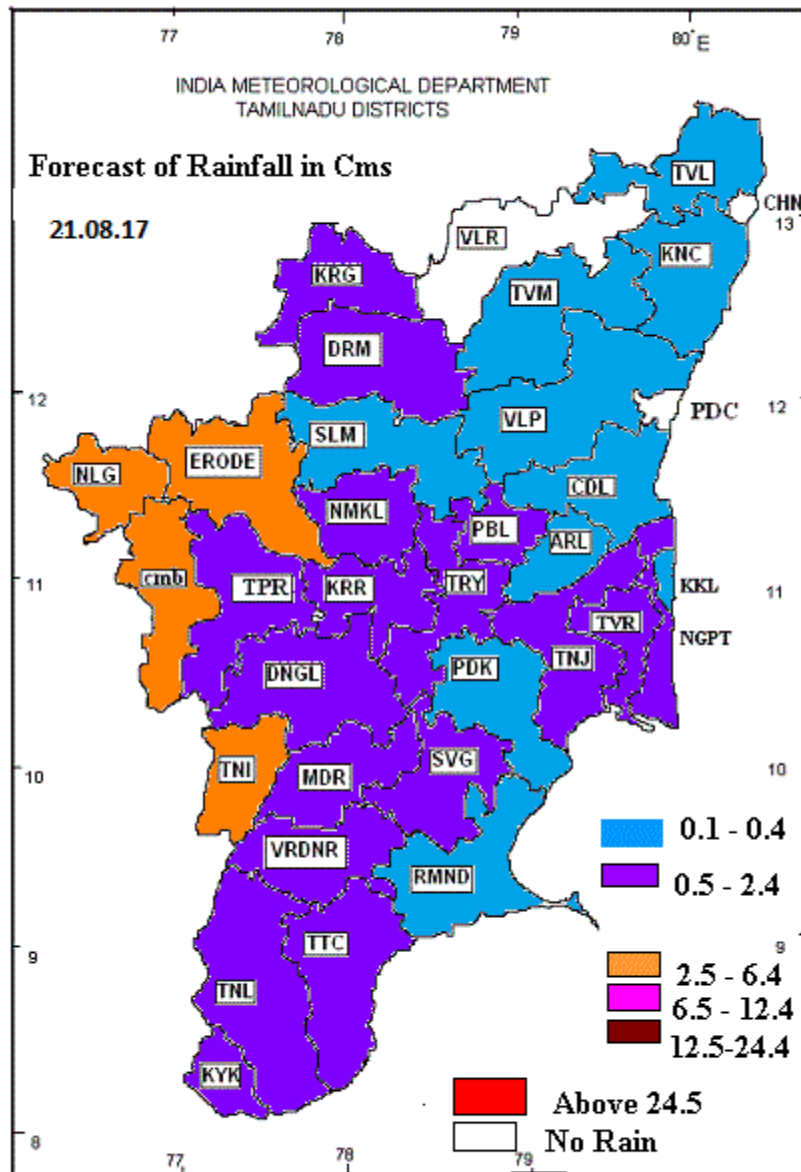
**DISTRICT LEVEL ENSEMBLE WEATHER FORECAST ISSUED ON: 16.08.2017
VALID FOR THE NEXT 5 DAYS**











Districtwise Agromet Advisories

Chennai

Livestock:

Light rainfall may be expected for next two day.

To control fluke infestation, animal should not be allowed to graze near ponds and lakes.

Farmers are advised to wash and clean the udder before milking and not to provide dusty roughage immediately after milking to avoid mastitis.

Sheep and goat shed remove 3-4 inches of mud floor and replace it with new mud to avoid infection.

Sheep and goat should be dewormed by using suitable anthelmintic by consulting with local veterinary doctor.

Backyard poultry farmer advised to vaccinate against ranikhet disease.

Agriculture (Krishi Vigyan Kendra, Kattupakkam)

Imp. Crops: Rice, Sugarcane and Groundnut

To control thrips and other sucking pest in cotton spray *Imidacloprid* 200 SL @ 100 ml/ha (or) *Dimethoate* 30 EC @ 500 ml/ha or *Azadirachtin* 0.03% EC @ 500 ml/ha.

To control bacterial leaf blight in rice spray Copper hydroxide 77 WP @ 2.5g/ litre or 20% fresh cow dung extract or 5 % Neem Seed Kernel Extract.

Villupuram,Thiruvannamalai,Cuddalore,Kancheepuram & Thiruvallur

Livestock:

Light rainfall may be expected for next five day.

To control fluke infestation, animal should not be allowed to graze near ponds and lakes.

Farmers are advised to wash and clean the udder before milking and not to provide dusty roughage immediately after milking to avoid mastitis.

Sheep and goat shed remove 3-4 inches of mud floor and replace it with new mud to avoid infection.

Sheep and goat should be dewormed by using suitable anthelmintic by consulting with local veterinary doctor.

Backyard poultry farmer advised to vaccinate against ranikhet disease.

Agriculture

Imp. Crops: Rice, Sugarcane and Groundnut

To control thrips and other sucking pest in cotton spray *Imidacloprid* 200 SL @ 100 ml/ha (or) *Dimethoate* 30 EC @ 500 ml/ha or *Azadirachtin* 0.03% EC @ 500 ml/ha.

To control bacterial leaf blight in rice spray Copper hydroxide 77 WP @ 2.5g/ litre or 20% fresh cow dung extract or 5 % Neem Seed Kernel Extract.

Vellore

Livestock:

Light rainfall may be expected for next four day.

To control fluke infestation, animal should not be allowed to graze near ponds and lakes.

Farmers are advised to wash and clean the udder before milking and not to provide dusty roughage immediately after milking to avoid mastitis.

Sheep and goat shed remove 3-4 inches of mud floor and replace it with new mud to avoid infection.

Sheep and goat should be dewormed by using suitable anthelmintic by consulting with local veterinary doctor.

Backyard poultry farmer advised to vaccinate against ranikhet disease.

Agriculture

Imp. Crops: Rice, Sugarcane and Groundnut

To control thrips and other sucking pest in cotton spray *Imidacloprid* 200 SL @ 100 ml/ha (or) *Dimethoate* 30 EC @ 500 ml/ha or *Azadirachtin* 0.03% EC @ 500 ml/ha.

To control bacterial leaf blight in rice spray Copper hydroxide 77 WP @ 2.5g/ litre or 20% fresh cow dung extract or 5 % Neem Seed Kernel Extract.

Virudhunagar

Crop/ Farming system	Stage / Activities	Advisories
All crops	All stage	As rainfall is expected in the coming days provide adequate drainage to the crop in field in order to prevent water stagnation.
		As rainfall is forecasted for the next five days postpone spraying of plant protection chemicals.

SMS:

VNR: Rain: 17- 21.8.17: 15, 15, 15, 5& 10 mm. Brinjal - **shoot and fruit borer**- Quinalphos 25 EC 2 ml/ l + neem oil 3 % at 15 days interval.

Tirunelveli and Thoothukudi

Cotton (IR)	Flowering stage	In the prevailing weather having light to moderate cloud cover and high humidity there is incidence of leaf hopper and whitefly in cotton. For controlling white fly remove and destroy alternate weed hosts like <i>Abutilon indicum</i> , <i>Chrozophore rottlari</i> , <i>Solanum nigrum</i> etc. Spraying of imidachloprid 100 ml/ ha will help to control these pests.
Brinjal	Vegetative stage	The prevailing weather is conducive for the incidence of shoot and fruit borer . Wilting occurs from 30 DAS. Remove the affected terminal shoots showing boreholes. Remove the affected fruits and destroy. Spray Quinalphos 25 EC 2 ml/ l + neem oil 3 % starting from one month after planting at 15 days interval.
Bhendi	Fruiting stage	As moderate cloud cover, light rainfall and moderate humidity expected in the coming days, fruit borer is noticed in bhendi,

		<p>To control fruit borers</p> <ul style="list-style-type: none"> • Set up pheromone trap @ 12 / ha. • Collect and destroy affected fruits. • Spray any one of the insecticide like Azadirachtin 0.03% WSP (300 ppm) 5.0 g / l or Azadirachtin 5% or Neem seed extract Concentrate 5.0 ml /10 litre.
--	--	--

SMS:

TVL: Rain: 17- 21.8.17: 5, 5, 10, 3& 5 mm. Brinjal - **shoot and fruit borer**- Quinalphos 25 EC 2 ml/ l + neem oil 3 % at 15 days interval.

TUT: Rain: 17- 21.8.17: 3, 10, 10, 3& 5 mm. Brinjal - **shoot and fruit borer**- Quinalphos 25 EC 2 ml/ l + neem oil 3 % at 15 days interval.

Nilgiris

Moderate rainfall is expected in the Nilgiris district for next five days. During rainy days, drainage facilities should be created in the field to drain excess water. Due to cloudy weather, there may be chances for the spread of fungal diseases in hilly vegetable crops. Due to cloudy weather, there may be chance of occurrence of blister blight disease in tea crop. Foliar spray of propiconazole @ 80 ml + Copper Oxy Chloride (COC) @ 84g / acre may be done. Due to expected rainfall, proper drainage facilities may be created in the field; drench the beds with Copper Oxy Chloride (COC) @ 2.5 g per litre of water or Pseudomonas fluorescens @ 2 g/litre of water to prevent soft rot disease in ginger crop. Application of 365 kg of ammonium sulphate in two split doses, 250 kg of super phosphate, 65 kg of potash can be done for garlic crop

Karaikal

Farmers are advised to take up summer ploughing utilizing the recent rainfall in order to destroy weeds, larvae, pupae, fungal spores and also to improve the infiltration rate in soil.

To control bacterial leaf blight in rice spray Copper hydroxide 77 WP @ 2.5g/ litre or 20% fresh cow dung extract or 5 % Neem Seed Kernel Extract.

To control mealy bug in cotton spray Thiamethoxam 25 WG @ 100 g/ha or Dimethoate 30 EC 2 ml /litre.

To control pink bollworm in cotton spray Triazophos 40 EC @ 1.5 - 2 litre / ha.

Puducherry

Farmers are advised to take up summer ploughing utilizing the recent rainfall in order to destroy weeds, larvae, pupae, fungal spores and also to improve the infiltration rate in soil.

To control shoot and fruit borer in bhendi, apply Chlorantraniliprole 18.5 SC @ 125 ml/ha.

To control rice stem borer, spray CartapHydrochloride 50 % SP @ 1000 g/ha or Phosphamidon 40% SL @ 1250 ml/ha.

Ariyalur,Nagapattinam,Thanjavur & Thiruvarur

Crop: Rice Stage: Kuruvai - Panicle initiation stage; Samba: Land preparation and sowing At active tillering stage of Kuruvai paddy, top dressing can be done with 25 kg urea and 10→ kg MOP/acre by keeping thin film of water in the field. Rice varieties CR 1009 and ADT 50 are suitable for samba season in Cauvery delta zone.→ For direct sown rice in samba season, sowing by using tractor drawn seed drill, seed rate of 15→ kg/acre is required. For manual broadcasting seed rate of 30 kg/acre is required. Seeds should be treated with pseudomonas fluorescense 10g/kg of seed before sowing. Seed treatment increase seed germination, seedling vigour and controls the seed borne infection. Livestocks Thick and wet litter produce/generates more heat. Therefore, during summer, the litter→ thickness must not be more than 6 cm. Add 1 kg of sodium bicarbonate to one tonne of layer feed to lower heat stroke and to→ increase shell thickness.

Karur & Perambalur

Crop: Groundnut & Sunflower As moderate rainfall is expected in the coming days of Cauvery delta districts, prepare the land→ for samba cultivation. Apply pendimethilin @ 1.3 ltr/acre along with sand to control the weeds.→ Since high wind speed is expected in coming days, give support for banana.→ Livestocks Thick and wet litter produce/generates more heat. Therefore, during summer, the litter→ thickness must not be more than 6 cm. Add 1 kg of sodium bicarbonate to one tonne of layer feed to lower heat stroke and to increase→ shell thickness.

Thiruchirapalli

Crop: Rice, Black gram, Sugarcane, Cotton Stage: Kuruvai - Panicle initiation stage; Samba: Land preparation and sowing At active tillering stage of Kuruvai paddy, top dressing can be done with 25 kg urea and→ 10 kg MOP/acre by keeping thin film of water in the field. Rice varieties CR 1009 and ADT 50 are suitable for samba season in Cauvery delta zone.→ For direct sown rice in samba season, sowing by using tractor drawn seed drill, seed rate of→ 15 kg/acre is required. For manual broadcasting seed rate of 30 kg/acre is required. Seeds should be treated with pseudomonas fluorescense 10g/kg of seed before sowing. Seed treatment increase seed germination, seedling vigour and controls the seed borne infection. Livestocks Thick and wet litter produce/generates more heat. Therefore, during summer, the litter→ thickness must not be more than 6 cm. Add 1 kg of sodium bicarbonate to one tonne of layer feed to lower heat stroke and to→ increase shell thickness.

Coimbatore

Blocks	Sugar cane	Rice	Turmeric	Milletts	Cotton
Thondamuthur	V	P	V	S	BP
Karamadai	V	-	V	S	BP
Sulur	V	-	V	S	BP
Sultanpet	V	-	V	S	BP
Pollachi	V	P	V	S	BP

P.N Palayam	V	-	V	S	BP
Kinathukadavu	V	P	V	S	BP
Annur	V	-	V	S	BP
Madukarai	V	-	V	S	BP
Annaimalai	V	P	V	S	BP

V-Vegetative; P – Planting ; M–Maturity; BP–Boll picking; S–Sowing

Agro Advisory

By utilizing rainfall, fodder sorghum or cowpea may be sown under rainfed lands.

Since, rainfall is expected tomato seedling may be transplanted in ridges and furrows under rainfed conditions.

Farmers are advised not to allow their animals to graze near pond or lake areas to avoid fluke infestation. Since, rainfall is expected irrigation to the crops may be avoided or postponed.

Weather conditions is favorable for the tikka leaf spot incidence in Groundnut and monitor the incidence if necessary spray Carbendazim 500gram or Mancozeb 1000gram per ha.

SMS advisory

By utilizing rainfall, fodder sorghum or cowpea may be sown under rainfed lands.

Erode

Taluks	Sugar cane	Rice	Turmeric	Millets	Cotton
Ammamet	V	-	V	S	BP
Bhavani	V	P	V	S	BP
Erode	V	-	V	S	BP
Perundurai	V	-	V	S	BP
Sathyamangalam	V	-	V	S	BP
Nambiyur	V	P	V	S	BP
Gobichettipalayam	V	P	V	S	BP

V-Vegetative; P-Planting; M–Maturity; BP–Boll picking; S–Sowing

Agro Advisory

By utilizing rainfall, fodder sorghum or cowpea may be sown under rainfed lands.

Since, rainfall is expected tomato seedling may be transplanted in ridges and furrows under rainfed conditions.

Farmers are advised not to allow their animals to graze near pond or lake areas to avoid fluke infestation

Since, rainfall is expected irrigation to the crops may be avoided or postponed.

Weather conditions is favorable for the tikka leaf spot incidence in Groundnut and monitor the incidence if necessary spray Carbendazim 500gram or Mancozeb 1000gram per ha.

SMS advisory

By utilizing rainfall, fodder sorghum or cowpea may be sown under rainfed lands.

Tiruppur

Blocks	Sugar cane	Millets	Turmeric	Irrigated Maize	Cotton
Avinashi	V	S	V	F	BP
Kankayam	V	S	V	F	BP
Madathukulam	V	S	V	F	BP
Gudimangalam	V	S	V	F	BP
Palladam	V	S	V	F	BP
Dharapuram	V	S	V	F	BP
Udumalpet	V	S	V	F	BP

V-Vegetative; M-Maturity; BP-Boll picking; F –Flowering; LP-Land preparation

Agro Advisory

By utilizing rainfall, fodder sorghum or cowpea may be sown under rainfed lands.

Since, rainfall is expected tomato seedling may be transplanted in ridges and furrows under rainfed conditions.

Farmers are advised not to allow their animals to graze near pond or lake areas to avoid fluke infestation

Since, rainfall is expected irrigation to the crops may be avoided or postponed.

Weather conditions is favorable for the tikka leaf spot incidence in Groundnut and monitor the incidence if necessary spray Carbendazim 500gram or Mancozeb 1000gram per ha.

SMS advisory

By utilizing rainfall, fodder sorghum or cowpea may be sown under rainfed lands.

Dindigul

Weather Based Agro-Advisories : (Important Crops : Cereals, Fruits) Prevailing current weather pre-treatment of seed is important in Sorghum cultivation. Treat the seeds 24 hours prior to sowing with Carbendazim or Captan or Thiram at 2g/kg of seed. Treat the seeds with three packets (600 g) / ha of Azospirillum and 3 packets (600g) of phosphobacteria or 6 packets of Azophos (1200g) using rice kanji as binder. . Prevailing current weather conditions the incense of canker in Citrus. Affects leaf, twig and fruits. In canker, leaves are not distorted. Lesions are typically circular with yellow halo; appear on both sides of leaf, severe in acid lime (difference from scab) When lesions are produced on twigs, they are girdled and die. Control leaf miner when young flush is produced. Prune badly infected twigs before the onset of monsoon. Streptomycin sulphate 500-1000 ppm; or Phytomycin 2500 ppm or Copper oxychloride 0.2% at fortnight intervals. Prevailing weather condition the incense of Enterotoxaemia in Goat. The mail symptoms of the disease causes sudden death in young growing kids. Mucous diarrhea may also seen during death . To prevent and control this disease Don't feed on young grass, .allow the goat for grazing after 1 hour of sunshine & vaccinate the animals once in a year before the onset of monsoon.

Madurai

Weather Based Agro-Advisories : (Important Crops : Paddy & Sorghum) Prevailing current weather the incense of Thrips in paddy .Paddy leaf shows discoloration and rolling, Yellow (or) silvery streaks on the leaves of young seedlings, Terminal rolling and drying of leaves from tip to base, It causes damage both in nursery and main field, Leaf tips wither off when severely infested, Unfilled grains at panicle stage . To control ETL: 60 numbers in 12 passes or rolling of the first and second leaves in 10% of seedlings and spray Phosphamidon 40 SL 50 ml. Prevailing current weather pre-treatment of seed is important in Sorghum cultivation. Treat the seeds 24 hours prior to sowing with Carbendazim or Captan or Thiram at 2g/kg of seed. Treat the seeds with three packets (600 g) / ha of Azospirillum and 3 packets (600g) of phosphobacteria or 6 packets of Azophos (1200g) using rice kanji as binder. Prevailing weather condition the incense of Enterotoxaemia in Goat. The mail symptoms of the disease causes sudden death in young growing kids. Mucous diarrhea may also seen during death . To prevent and control this disease Don't feed on young grass, .allow the goat for grazing after 1 hour of sunshine & vaccinate the animals once in a year before the onset of monsoon.

Pudukottai

Weather Based Agro - Advisories : (Important Crops : Cereals & Pulses) Prevailing current weather the incense of Thrips in paddy .Paddy leaf shows discoloration and rolling, Yellow (or) silvery streaks on the leaves of young seedlings, Terminal rolling and drying of leaves from tip to base, It causes damage both in nursery and main field, Leaf tips wither off when severely infested, Unfilled grains at panicle stage . To control ETL: 60 numbers in 12 passes or rolling of the first and second leaves in 10% of seedlings and spray Phosphamidon 40 SL 50 ml. Due to current situation the weed management is vital in Groundnut cultivation, Pre-sowing of Groundnut Fluchloralin at 2.0 l/ha soil applied and incorporated followed by light irrigation. And Pre-emergence of Groundnut Fluchloralin 2.0 l/ha or Pendimethalin @ 3.3l/ha applied on third day after sowing through flat fan nozzle with 500 l of water/ha followed by irrigation. Prevailing weather condition the incense of Enterotoxaemia in Goat. The mail symptoms of the disease causes sudden death in young growing kids. Mucous diarrhea may also seen during death . To prevent and control this disease Don't feed on young grass, .allow the goat for grazing after 1 hour of sunshine & vaccinate the animals once in a year before the onset of monsoon.

Ramanathapuram

Weather Based Agro-Advisories : (Important Crops : Paddy & Pulse) Prevailing current weather the incense of Thrips in paddy .Paddy leaf shows discoloration and rolling, Yellow (or) silvery streaks on the leaves of young seedlings, Terminal rolling and drying of leaves from tip to base, It causes damage both in nursery and main field, Leaf tips wither off when severely infested, Unfilled grains at panicle stage . To control ETL: 60 numbers in 12 passes or rolling of the first and second leaves in 10% of seedlings and spray Phosphamidon 40 SL 50 ml. Due to current situation the weed management is vital in Groundnut cultivation, Pre-sowing of Groundnut Fluchloralin at 2.0 l/ha soil applied and incorporated followed by light irrigation. And Pre-emergence of Groundnut Fluchloralin 2.0 l/ha or Pendimethalin @ 3.3l/ha applied on third day after sowing through flat fan nozzle with 500 l of water/ha followed by irrigation. Prevailing weather condition the incense of Enterotoxaemia in Goat. The mail symptoms of the disease causes sudden death in young growing kids. Mucous diarrhea may also seen during death . To prevent and control this disease Don't feed on young grass, .allow the goat for grazing after 1 hour of sunshine & vaccinate the animals once in a year before the onset of monsoon..

Sivagangai

Weather Based Agro-Advisories : (Important Crops : Cereals & Pulses) Due to current situation the weed management is vital in Groundnut cultivation, Pre-sowing of Groundnut Fluchloralin at 2.0 l/ha soil applied and incorporated followed by light irrigation. And Pre-emergence of Groundnut Fluchloralin 2.0 l/ha or Pendimethalin @ 3.3l/ha applied on third day after sowing through flat fan nozzle with 500 l of water/ha followed by irrigation. Prevailing current weather pre-treatment of seed is important in Sorghum cultivation. Treat the seeds 24 hours prior to sowing with Carbendazim or Captan or Thiram at 2g/kg of seed. Treat the seeds with three packets (600 g) / ha of Azospirillum and 3 packets (600g) of phosphobacteria or 6 packets of Azophos (1200g) using rice kanji as binder. Prevailing weather condition the incense of Enterotoxaemia in Goat. The mail symptoms of the disease causes sudden death in young growing kids. Mucous diarrhea may also seen during death . To prevent and control this disease Don't feed on young grass, .allow the goat for grazing after 1 hour of sunshine & vaccinate the animals once in a year before the onset of monsoon..

Theni

Weather Based Agro-Advisories : (Important Crops : Cereals,Pulses,Fruit) Prevailing current weather pre-treatment of seed is important in Sorghum cultivation. Treat the seeds 24 hours prior to sowing with Carbendazim or Captan or Thiram at 2g/kg of seed. Treat the seeds with three packets (600 g) / ha of Azospirillum and 3 packets (600g) of phosphobacteria or 6 packets of Azophos (1200g) using rice kanji as binder. Due to current situation the weed management is vital in Groundnut cultivation, Pre-sowing of Groundnut Fluchloralin at 2.0 l/ha soil applied and incorporated followed by light irrigation. And Pre-emergence of Groundnut Fluchloralin 2.0 l/ha or Pendimethalin @ 3.3l/ha applied on third day after sowing through flat fan nozzle with 500 l of water/ha followed by irrigationPrevailing weather condition the occurrence of powdery mildew in Chilly . Due to incense of powdery mildew the shedding of foliage and white powdery growth on lower side of leaves. To control this spray Wettable sulphur 0.25% or Dinocap (Karathane) 0.05%. Prevailing current weather conditions the incense of canker in Citrus. Affects leaf, twig and fruits. In canker, leaves are not distorted. Lesions are typically circular with yellow halo; appear on both sides of leaf, severe in acid lime (difference from scab) When lesions are produced on twigs, they are girdled and die. Control leaf miner when young flush is produced. Prune badly infected twigs before the onset of monsoon. Streptomycin sulphate 500-1000 ppm; or Phytomycin 2500 ppm or Copper oxychloride 0.2% at fortnight intervals. Prevailing weather condition the incense of Enterotoxaemia in Goat. The mail symptoms of the disease causes sudden death in young growing kids. Mucous diarrhea may also seen during death . To prevent and control this disease Don't feed on young grass, .allow the goat for grazing after 1 hour of sunshine & vaccinate the animals once in a year before the onset of monsoon.

Kanyakumari

AGRO ADVISORIES

1. There are possibilities of 60 mm of rainfall during the forthcoming days.
2. As rainy weather is expected in the coming days strengthening the basins for fruit trees and tree spices may be taken up for better harvesting of rains.
3. Banana: Use transparent polythene sleeves (2%) to cover the bunches due to rainfall. It increases the quality of bunches.
4. Rubber: Fix a polythene rain guard to the trunk of the tree above tapping panel. So that tapping is

done during rainy season also.

5. As heavy winds (15 -20kmph) are blown from the South West direction in the forth coming days, staking should be given to young rubber and banana plants.
6. Spraying of chemicals should be avoided due to heavy wind speed.

SMS Advisory

Rubber: Fix a polythene rain guard to the trunk of the tree above tapping panel. So that tapping is done during rainy season also.

Salem, Namakkal,Dharmapuri &Krishnagiri

For next two days, the sky will be generally cloudy with chance of scattered rainfall. Maximum and minimum temperature will be 33.0°C (91.4°F) and 21.0°C (69.8°F) respectively. Wind speed will be around 4 km/hour, mostly from west direction. Relative humidity will be in the range of 50 - 95%. Southwest monsoon continues to be active over Tamil Nadu. Hence, there will be cloudiness and mild rainfall. Day and night temperature will decrease, whereas humidity will rise. With these weather conditions, care should be taken on the storage and usage of feed ingredients. Do not allow formation of mycotoxins in feed material. Add toxin binders and liver tonic in feed.

Special Agroadvisory from Krishi Vigyan Kendra, Namakkal:

To make use these prevailing rainfall, farmers are advised to cultivate *sorghum, minor millets, green gram, red gram and blank gram*. Follow weeding operation for already cultivated crops with available soil moisture.

