

Publication No.: 2/2011

**Length of Growing Period based Cropping Pattern
for different Agro-ecological Zones of Tamil Nadu**



**Department of Remote Sensing and GIS
Directorate of Natural Resource Management
Tamil Nadu Agricultural University
Coimbatore 641003
2011**

**Length of Growing Period based Cropping Pattern
for different Agro-ecological Zones of Tamil Nadu**

**Department of Remote Sensing and GIS
Directorate of Natural Resource Management
Tamil Nadu Agricultural University
Coimbatore 641003**

Publication No.: 2/2011



TAMIL NADU AGRICULTURAL UNIVERSITY
COIMBATORE – 641 003
TAMIL NADU, INDIA

Dr. P. Murugesha Boopathi, M.Sc.(Ag), Ph.D.,
Vice Chancellor

FOREWORD



Planning is the first step to success. Crop planning will ensure successful agricultural planning and better returns from farm. Crop husbandry depends on soil, water and climate. Crop planning should take these into consideration besides looking at the availability of other resources like labour and markets as well as government policies.

With a view of taking the outcome of technological advancements in the field of 'Geographic Information System' (GIS) and 'Remote Sensing' (RS) for the benefits of farming community, the Department of Remote Sensing and Geographic Information System of the Directorate of Natural Resource Management, Tamil Nadu Agricultural University is bringing out this Length of Growing Period based Cropping Pattern for different Agro-ecological Zones of Tamil Nadu. Scientists from Agricultural Climatic Research Centre and Department of Agronomy have also contributed for the technological content of this bulletin. A section of the document on 'Agro-Ecological Zones of Tamil Nadu' prepared by National Bureau of Soil Survey and Land Use Planning, Regional Centre, Bangalore (NBSS&LUP, 2011) in English is also appended to this bulletin for a quick reference to the details of soil, rainfall pattern and potential evapo-transpiration of the different AEZs in Tamil Nadu.

The suggested crops are selected based on the Length of Growing Period and soil types besides the climatic conditions that prevail in different parts of the state. The crops were suggested based on rainfall / dryland farming situations of the different AEZs of Tamil Nadu. Wherever additional irrigation sources like wells, tank and canal are available, the crop plan can be modified accordingly.

I strongly believe that this document will help extension personnel as a valuable reference material while making advises to the farmers, in selecting suitable crops / crop varieties based on the soils and climatic conditions that prevail in their AEZs, with a strong scientific basis. This bulletin will help enhance the returns from farm and also empower the farmers with the capacity to make '*informed decisions*' in crop planning.

I appreciate the earnest efforts of the team of scientists of the Department of Remote Sensing and Geographic Information System in taking forward the outcome of the technological breakthroughs in RS & GIS to the betterment of the farming community. I also wish the Remote Sensing and Geographic Information System team every success in their all future endeavors.

July 05, 2011
Coimbatore – 641 003


(P. Murugesha Boopathi)

Content

Sl. No	District	Page No
1	Ariyalur	1
2	Ramanathapuram	1
3	Erode	3
4	Cuddalore	4
5	Karur	6
6	Kanyakumari	7
7	Kancheepuram	8
8	Krishnagiri	9
9	Coimbatore	10
10	Sivagangai	12
11	Chennai	14
12	Salem	14
13	Thanjavur	16
14	Dharmapuri	17
15	Dindigul	18
16	Truchirappalli	19
17	Tirunelveli	20
18	Tirupur	22
19	Tiruvannamalai	23
20	Tiruvallur	25
21	Tiruvarur	26
22	Theni	27
23	Toottukudi	28
24	Nagappatinam	29
25	Namakkal	30
26	The Nilgiris	31
27	Pudukottai	32
28	Perambalur	33
29	Madurai	35
30	Virudhunagar	36
31	Villupuram	37
32	Velur	39

Length of Growing Period based Cropping Pattern for different Agro-ecological Zones of Tamil Nadu

ARIYALUR

5.4 Inland plains		
Blocks covered	Andimadam, Ariyalur, Jayamkondam, Sendurai, T.Palur, Tirumanur	
Growing season	3 rd week of July to 3 rd week of Feb	
LGP(days)	150-180	
Rainfall (mm)	770	
Soil Type	Deep to very deep clay to gravely mixed clay soil	
Crops grown	<i>kharif</i>	Rice, Sorghum, major and minor millets, Pulses, Cotton, Ground nut, Sesame, Chillies, Tapioca, sugar cane, red gram, vegetables, turmeric, sun flower,
	<i>Rabi</i>	Paddy, minor millets, sorghum, horse gram, Green gram, black gram, sugar cane, ragi, red gram, chillies, cotton.
Crops suggested	<i>kharif</i>	Double cropping Rice – Rice Rice – Pulse Millets (Maize) – Rice Cumbu/ Ragi/Maize/Sunflower - Rice Cotton Rice- Groundnut Flowers / Sugarcane / Banana Casuarina Groundnut - Rice
	<i>Rabi</i>	Paddy, horse gram, sugar cane, chillies, cotton.

RAMANATHAPURAM

5.1 Inland plains		
Blocks covered	Kamuthi	
Growing season	3 rd week of Oct to 2 nd week of Jan	
LGP(days)	<90	
Rainfall (mm)	818	
Soil Type	Medium deep to red soil. Gravel mixed clay and alluvial red soil	
Crops grown	<i>kharif</i>	Rice, Sorghum, Cumbu, maize, red gram, black gram, cow pea, sugar cane, Cotton, brinjal, Chillies, tomato, banana, tapioca, millets.
	<i>Rabi</i>	Ragi, black gram, sorghum, cumbu, maize, kudirai vali, black gram, green gram.
Crops suggested	<i>kharif</i>	Millets Cumbu Ragi, Fodder Maize Sunflower
	<i>Rabi</i>	Ragi, black gram, sorghum, cumbu, maize, kudirai vali, black gram, green gram
5.2 Inland plains		
Blocks covered	Bogalur, part of Kadaladi, Mudukulathur, Nainarkoil, Paramakudi, R.s.mangalam, part of Ramanathapuram, part of Thirupulani, Thiruvadana	
Growing season	3 rd week of Oct to 4 th week of Jan	
LGP(days)	90-120	
Rainfall (mm)	639	
Soil Type	Medium deep to deep black soil mixed with Red soil and gravely mixed black soil	
Crops grown	<i>kharif</i>	Rice, chillies, Millets, Sorghum, sugar cane, citrus, brinjal
	<i>Rabi</i>	Rice, black gram, green gram, cow pea, chillies, cotton, ragi
Crops suggested	<i>kharif</i>	Rice Sorghum Cumbu Ragi Maize Sunflower Pulses Casuarinas' / Eucalyptus
	<i>Rabi</i>	Rice, black gram, green gram, cow pea, Vegetables
6.2 Coastal plains		
Blocks covered	part of Kadaladi, Mandapam, part of Ramanathapuram, part of Thirupulani	
Growing season	1 st week of Oct to 3 rd week of Jan	
LGP(days)	90-120 d 806 mm	
Rainfall (mm)		
Soil Type	Sandy soil	
Crops grown	<i>kharif</i>	Rice, Pulses, cotton, Groundnut, Maize, Cumbu, Sesame
	<i>Rabi</i>	Paddy, Green gram, black gram, sugar cane, ragi, red gram, chillies,

		cotton.
Crops suggested	<i>kharif</i>	Rice Millets Maize Sunflower Pulses Groundnut Cotton
	<i>Rabi</i>	

ERODE

3.1 Eastern Ghats		
Blocks covered	part of Ammapet, Anthiyur, Sathyamangalam, part of T.N. Palayam, Thalavadi	
Growing season	2 nd week of July to 4 th week of Dec	
LGP(days)	150-180	
Rainfall (mm)	547	
Soil Type	Medium deep to deep gravely mixed alluvial and clay soil	
Crops grown	<i>kharif</i>	Sorghum, major millets and minor millets, turmeric, paddy, sugarcane, banana, vegetables, red gram, Bengal gram, horse gram, cow pea, sunflower, cotton
	<i>Rabi</i>	Maize, sorghum, minor millets, paddy, sugar cane and vegetables, Tapioca, Fruit crops
Crops suggested	<i>kharif</i>	Turmeric / Sugarcane / banana – with supplemental irrigation Rice – Rice Pulse – Rice Millets – Rice Cotton
	<i>Rabi</i>	sugar cane and vegetables, Cotton
4.2 Tamil Nadu uplands		
Blocks covered	part of Bhavani, Bhavanisagar, Chennimalai, Gobichettipalayam, Nambiyur, Perundurai, part of T.N. Palayam,	
Growing season	2 nd week of sep to 3 rd week of Dec	
LGP(days)	90-120	
Rainfall (mm)	565	
Soil Type	Deep to very deep gravely mixed clay soil	
Crops grown	<i>kharif</i>	Paddy, sorghum, maize, pulses, cotton, sugar cane, banana, chillies, onion, citrus, mango, amla, vegetables, tomato
	<i>Rabi</i>	Rice, black gram, horse gram, cow pea, onion, maize and sorghum
Crops suggested	<i>kharif</i>	Medium duration rice crop Rice – rice fallow pulse Millets Cotton Pulses / Sesame
	<i>Rabi</i>	Rice, black gram, horse gram, cow pea, onion, maize and sorghum
4.3 Tamil Nadu uplands		
Blocks covered	part of Ammapet, part of Bhavani, part of Erode, part of Kodumudi, part of Modakurichi	
Growing season	2 nd week of July to 4 th week of Dec	
LGP(days)	150-180	
Rainfall (mm)	686	
Soil Type	Medium deep to clay soil and gravely mixed red clay soil	
Crops grown	<i>kharif</i>	Cotton, minor millets, paddy, pulses, sorghum, maize, sun flower, onion, sugar cane, turmeric, chillies, tapioca, vegetables.
	<i>Rabi</i>	Rice, , Sunflower, Cotton, black gram, vegetables
Crops suggested	<i>kharif</i>	Double cropping is possible Rice – Rice Millets – Rice Rice – Pulse Sunflower – Maize Cotton Banana / Sugarcane / Flowers
	<i>Rabi</i>	Sunflower, vegetables
5.3 Inland plains		
Blocks covered	part of Erode, part of Kodumudi, part of Modakurichi	
Growing season	1 st week of Oct to 2 nd week of Feb	
LGP(days)	129-150	
Rainfall (mm)	592	
Soil Type	Medium deep to very deep black soil	
Crops grown	<i>kharif</i>	Cotton, minor millets, paddy, pulses, sorghum, maize, sun flower, onion, sugar cane, turmeric, chillies, tapioca, vegetables.
	<i>Rabi</i>	Rice, Sunflower, Cotton, black gram, vegetables
Crops suggested	<i>kharif</i>	Double cropping Rice – Rice / Rice – Pulse, Cumbu/ Ragi/Maize/Sunflower – Rice, Rice- Groundnut Flowers

	<i>Rabi</i>	Rice, Sunflower, Cotton
--	-------------	-------------------------

CUDDALORE

5.4 Inland plains		
Blocks covered	Kattumannarkoil, part of Keerapalayam, part of Kumaratchi, Mangalore, part of Nallur	
Growing season	3 rd week of July to 3 rd week of Feb	
LGP(days)	150-180	
Rainfall (mm)	770	
Soil Type	Deep to very deep clay to gravelly mixed clay soil	
Crops grown	<i>kharif</i>	Rice, Sorghum, major and minor millets, Pulses, Cotton, Ground nut, Sesame, Chillies, Tapioca, sugar cane, red gram, vegetables, turmeric, sun flower,
	<i>Rabi</i>	Paddy, minor millets, sorghum, horse gram, Green gram, black gram, sugar cane, ragi, red gram, chillies, cotton.
Crops suggested	<i>kharif</i>	Double cropping Rice – Rice Rice – Pulse Millets (Maize) – Rice Cumbu/ Ragi/Maize/Sunflower - Rice Cotton Rice- Groundnut Flowers / Sugarcane / Banana Casuarina Groundnut - Rice
	<i>Rabi</i>	Paddy, horse gram, sugar cane, chillies, cotton.
5.5 Inland plains		
Blocks covered	Annagramam, part of Cuddalore, Kammapuram, part of Keerapalayam, part of Kumaratchi, Kurinjipadi, Mel bhuvanagiri, part of Nallur, Panruti, part of Parangipettai, Vridhachalam	
Growing season	3 rd week of July to 3 rd week of Feb	
LGP(days)	180-210	
Rainfall (mm)	865	
Soil Type	Deep to very deep clay to gravel mixed red clay soil	
Crops grown	<i>kharif</i>	Paddy, Groundnut, Sugarcane, Cholan, Cumbu, Redgram, Tapioca, Greengram, Blackgram, Coriander, Banana, Maize, Varagu, Groundnut, Cashewnut and Coconut.
	<i>Rabi</i>	Cumbu, Redgram, Greengram, Blackgram, Coriander, Maize, Cotton, Gingelly
Crops suggested	<i>kharif</i>	Paddy, Groundnut, Sugarcane, Cholan, Cumbu, Redgram, Tapioca, Greengram, Blackgram, Coriander, Banana, Maize, Varagu, Groundnut,
	<i>Rabi</i>	Coriander, Maize, Cotton, Gingelly
6.4 Coastal plains		
Blocks covered	part of Cuddalore, part of Parangipettai	
Growing season	1 st week of Sep to 4 th week of Feb	
LGP(days)	180-210	
Rainfall (mm)	934	
Soil Type	Deep to very deep sandy soil	
Crops grown	<i>kharif</i>	Rice, Sorghum, maize, cumbu, banana, brinjal, water melon, Pulses, Cotton, sugar cane, red gram, vegetables, turmeric, sun flower,
	<i>Rabi</i>	Paddy, cumbu, ragi, , sorghum, , Green gram, black gram, sugar cane, ragi, cotton, sun flower
Crops suggested	<i>kharif</i>	Rice – Rice Sugarcane / Banana Rice – Rice –Rice fallow Pulses, Cowpea / Lab lab - Cotton Rainfed rice -
	<i>Rabi</i>	Paddy, cumbu, ragi, sorghum, Green gram, black gram, sugarcane

KARUR

4.2 Tamil Nadu uplands		
Blocks covered	Aravakuruchi, K.Paramathi, Kadavur, Krishnarayapuram, part of Thanthoni	
Growing season	2 nd week of Sep to 3 rd week of Dec	
LGP(days)	90-120	
Rainfall (mm)	565	

Soil Type		Deep to very deep gravely mixed clay soil
Crops grown	<i>kharif</i>	Paddy, sorghum, maize, pulses, cotton, sugar cane, banana, chillies, onion, citrus, mango, amla, vegetables, tomato
	<i>Rabi</i>	Rice, black gram, horse gram, cow pea, onion, maize and sorghum
Crops suggested	<i>kharif</i>	Medium duration rice crop Rice – rice fallow pulse Millets Cotton Pulses / Sesame
	<i>Rabi</i>	Rice, black gram, horse gram, cow pea, onion, maize and sorghum
4.3 Tamil Nadu uplands		
Blocks covered		part of Kulithalai, Thogamalai
Growing season		2 nd week of July to 4 th week of Dec
LGP(days)		150-180
Rainfall (mm)		686
Soil Type		Medium deep to clay soil and gravely mixed red clay soil
Crops grown	<i>kharif</i>	Cotton, minor millets, paddy, pulses, sorghum, maize, sun flower, onion, sugar cane, turmeric, chillies, tapioca, vegetables.
	<i>Rabi</i>	Rice, , Sunflower, Cotton, black gram, vegetables
Crops suggested	<i>kharif</i>	Double cropping is possible Rice – Rice Millets – Rice Rice – Pulse Sunflower – Maize Cotton Banana / Sugarcane / Flowers
	<i>Rabi</i>	Sunflower, vegetables
5.3 Inland plains		
Blocks covered		Karur, part of Kulithalai, part of Thanthoni
Growing season		1 st week of Oct to 2 nd week of Feb
LGP(days)		129-150
Rainfall (mm)		592
Soil Type		Medium deep to very deep black soil
Crops grown	<i>kharif</i>	Cotton, minor millets, paddy, pulses, sorghum, maize, sun flower, onion, sugar cane, turmeric, chillies, tapioca, vegetables.
	<i>Rabi</i>	Rice, , Sunflower, Cotton, black gram, vegetables
Crops suggested	<i>kharif</i>	Double cropping Rice – Rice / Rice – Pulse, Cumbu/ Ragi/Maize/Sunflower – Rice, Rice- Groundnut Flowers
	<i>Rabi</i>	Rice, , Sunflower, Cotton

KANNIYAKUMARI

2.1 South Sahyadri		
Blocks covered		part of Agasteeswaram, part of Melpuram, Thiruvattar, part of Thoivalai, part of Thuckalay
Growing season		1 st week of May to 2 nd week of Feb
LGP(days)		>270
Rainfall (mm)		799
Soil Type		Deep to medium deep alluvial with gravely clay soil
Crops grown	<i>kharif</i>	Rice, Sorghum, Cumbu, maize, Bengal gram, red gram, black gram, cow pea, sugar cane, Cotton, brinjal, Chillies, tomato, banana, tapioca, millets.
	<i>Rabi</i>	Ragi, black gram, sorghum, cumbu, maize, kudirai vali, black gram, green gram,
Crops suggested	<i>kharif</i>	Banana, Vegetables, Fruit trees, Rice – Rice
	<i>Rabi</i>	Vegetables
5.1 Inland plains		
Blocks covered		part of Thoivalai
Growing season		3 rd week of Oct to 2 nd week of Jan
LGP(days)		<90
Rainfall (mm)		818
Soil Type		Medium deep to red soil. Gravel mixed clay and alluvial red soil
Crops grown	<i>kharif</i>	Rice, Sorghum, Cumbu, maize, red gram, black gram, cow pea, sugar cane, Cotton, brinjal, Chillies, tomato, banana, tapioca, millets.
	<i>Rabi</i>	Ragi, black gram, sorghum, cumbu, maize, kudirai vali, black gram,

		green gram.
Crops suggested	<i>kharif</i>	Millets Cumbu Ragi, Fodder Maize Sunflower
	<i>Rabi</i>	Ragi,black gram,sorghum, cumbu, maize, kudirai vali, black gram, green gram
6.1 Coastal plains		
Blocks covered	part of Agasteeswaram, Rajakkamangalam	
Growing season	3 rd week of Oct to 2 nd week of Jan	
LGP(days)	<90	
Rainfall (mm)	870	
Soil Type	Very deep sandy soil	
Crops grown	<i>kharif</i>	Rice, Sorghum, Cumbu, maize, red gram, black gram, cow pea, sugar cane, Cotton, brinjal, Chillies, tomato, banana, tapioca, millets.
	<i>Rabi</i>	Ragi, black gram, sorghum, cumbu, maize, kudirai vali, black gram, green gram, Cow pea, cotton, chillies
Crops suggested	<i>kharif</i>	Millets Cumbu Ragi Maize Sunflower Semidry rice
	<i>Rabi</i>	Maize, kudirai vali, black gram, green gram,Cow pea, cotton,chillies
6.5 Coastal plains		
Blocks covered	Killiyoor, Kurunthencode, part of Melpuram, Munchirai, part of Thuckalay	
Growing season	4 th week of May to 4 th week of Jan	
LGP(days)	240-270	
Rainfall (mm)	1422	
Soil Type	Gravely mixed clay soil to gravely mixed red alluvial soil	
Crops grown	<i>kharif</i>	Rice, banana, coconut, black gram, tapioca, spices and condiments, palmyrah,
	<i>Rabi</i>	Banana, black gram, Green gram, plantations
Crops suggested	<i>kharif</i>	Rice – Rice – Rice Green manure – rice – rice Pulses – Paddy – Vegetables Banana /Tree crops
	<i>Rabi</i>	Black gram, Green gram

KANCHEEPURAM

5.5 Inland plains		
Blocks covered	Acharapakkam, Chithamur, Kancheepuram, Kattankolathur, Kunrathur, Lathur, Madhuranthagam, Sriperumandur, Thirukazhukundram, Thiruporur, part of Thomas mount, Uthiramerur, Walajabad	
Growing season	3 rd week of July to 3 rd week of Feb	
LGP(days)	180-210	
Rainfall (mm)	865	
Soil Type	Deep to very deep clay to gravel mixed red clay soil	
Crops grown	<i>kharif</i>	Paddy, Groundnut, Sugarcane, Chola, Cumbu, Redgram, Tapioca, Greengram, Blackgram, Coriander, Banana, Maize, Varagu, Groundnut, Cashewnut and Coconut.
	<i>Rabi</i>	Cumbu, Redgram, Greengram, Blackgram, Coriander, Maize, Cotton, Gingelly
Crops suggested	<i>kharif</i>	Paddy, Groundnut, Sugarcane, Chola, Cumbu, Redgram, Tapioca, Greengram, Blackgram, Coriander, Banana, Maize, Varagu, Groundnut,
	<i>Rabi</i>	Coriander, Maize, Cotton, Gingelly
6.4 Coastal plains		
Blocks covered	part of Thomas mount	
Growing season	1 st week of Sep to 4 th week of Feb	
LGP(days)	180-210	
Rainfall (mm)	934	
Soil Type	Deep to very deep sandy soil	
Crops grown	<i>kharif</i>	Rice, Sorghum, maize, cumbu, banana, brinjal, water melon, Pulses, Cotton, sugar cane, red gram, vegetables, turmeric, sun flower,
	<i>Rabi</i>	Paddy, cumbu, ragi, , sorghum, , Green gram, black gram, sugar cane, ragi, cotton, sun flower
Crops	<i>kharif</i>	Rice – Rice Sugarcane / Banana Rice – Rice –Rice fallow Pulses,

suggested		Cowpea / Lab lab - Cotton Rainfed rice -
	<i>Rabi</i>	Paddy, cumbu, ragi, sorghum, Green gram, black gram, sugarcane

KRISHNAGIRI

3.1 Eastern Ghats		
Blocks covered		part of Bargur, Hosur, part of Kaveripattinam, Kelamangalam, Krishnagiri, Shoolagiri, Thally, Veppanapalli
Growing season		2 nd week of July to 4 th week of Dec
LGP(days)		150-180
Rainfall (mm)		547
Soil Type		Medium deep to deep gravely mixed alluvial and clay soil
Crops grown	<i>kharif</i>	Sorghum, major millets and minor millets, turmeric, paddy, sugarcane, banana, vegetables, red gram, Bengal gram, horse gram, cow pea, sunflower, cotton
	<i>Rabi</i>	Maize, sorghum, minor millets, paddy, sugar cane and vegetables, Tapioca, Fruit crops
Crops suggested	<i>kharif</i>	Turmeric / Sugarcane / banana – with supplemental irrigation Rice – Rice Pulse – Rice Millets – Rice Cotton
	<i>Rabi</i>	sugar cane and vegetables, Cotton
4.3 Tamil Nadu uplands		
Blocks covered		part of Bargur, part of Kaveripattinam, Mathur, Uthangarai
Growing season		2 nd week of July to 4 th week of Dec
LGP(days)		150-180
Rainfall (mm)		686
Soil Type		Medium deep to clay soil and gravely mixed red clay soil
Crops grown	<i>kharif</i>	Cotton, minor millets, paddy, pulses, sorghum, maize, sun flower, onion, sugar cane, turmeric, chillies, tapioca, vegetables.
	<i>Rabi</i>	Rice, , Sunflower, Cotton, black gram, vegetables
Crops suggested	<i>kharif</i>	Double cropping is possible Rice – Rice Millets – Rice Rice – Pulse Sunflower – Maize Cotton Banana / Sugarcane / Flowers
	<i>Rabi</i>	Sunflower, vegetables

COIMBATORE

1.2		
Blocks covered		Karamadai, part of Madukkarai, part of Periyanaickenpalayam, part of Thondamuthur
Growing season		1 st week of June to 1 st week of Feb
LGP(days)		240-270
Rainfall (mm)		1356
Soil Type		Deep to medium deep clay and gravely red clay soil
Crops grown	<i>kharif</i>	Cholam, maize, redgram, black gram, Bengal gram, horse gram, lab lab, cow pea, vegetables, curry leaf, mango, banana, cotton, sugarcane, paddy
	<i>Rabi</i>	Sorghum, maize, pulses, onion, sun flower, cotton
Crops suggested	<i>kharif</i>	Double Cropping, Rice – Rice, Suagr cane / Banana with supplemental irrigation
	<i>Rabi</i>	Suagr cane, Cotton
2.1 South Sahyadri		
Blocks covered		part of Anamalai
Growing season		1 st week of May to 2 nd week of Feb
LGP(days)		>270
Rainfall (mm)		799
Soil Type		Deep to medium deep alluvial with gravely clay soil
Crops grown	<i>kharif</i>	Cholam, maize, redgram, black gram, Bengal gram, horse gram, lab lab, cow pea, vegetables, curry leaf, mango, banana, cotton, sugarcane, paddy
	<i>Rabi</i>	Sorghum, maize, pulses, onion, sun flower, cotton

Crops suggested	<i>kharif</i>	Double crop, Rice – Rice, Maize – Rice, Rice – Rice – Pulse, Maize – Redgram, Green gram - Cotton Sugarcane/ Banana
	<i>Rabi</i>	Maize - Redgram
4.1 Tamil Nadu uplands		
Blocks covered	Annur, part of Madukkarai, part of Periyanaickenpalayam, Sarkarsamakulam, Sultanpet, Sulur, part of Thondamuthur	
Growing season	2 nd week of Oct to 1 st week of Jan	
LGP(days)	<90	
Rainfall (mm)	541	
Soil Type	Deep to very deep gravely mixed alluvial and clay soil	
Crops grown	<i>kharif</i>	Cholam, maize, redgram, black gram, Bengal gram, horse gram, , vegetables, onion , banana, sun flower, cotton, tomato sugarcane, paddy, turmeric
	<i>Rabi</i>	Maize, sorghum, onion, pulses, sun flower, sugar cane, cotton, , millets.
Crops suggested	<i>kharif</i>	Rainfed single crop Pulses (Green gram / Black gram) Grain sorghum Maize With supplemental irrigation Cotton (Aug – Feb) Vegetables
	<i>Rabi</i>	Pulses (Green gram / Black gram) Grain sorghum Maize
4.2 Tamil Nadu uplands		
Blocks covered	part of Anamalai, Kinathukadavu, Pollachi north, Pollachi south	
Growing season	2 nd week of sep to 3 rd week of Dec	
LGP(days)	90-120	
Rainfall (mm)	565	
Soil Type	Deep to very deep gravely mixed clay soil	
Crops grown	<i>kharif</i>	Paddy, sorghum, maize, pulses, cotton, sugar cane, banana, chillies, onion, citrus, mango, amla, vegetables, tomato
	<i>Rabi</i>	Rice, black gram, horse gram, cow pea, onion, maize and sorghum
Crops suggested	<i>kharif</i>	Medium duration rice crop Rice – rice fallow pulse Millets Cotton Pulses / Sesame
	<i>Rabi</i>	Rice, black gram, horse gram, cow pea, onion, maize and sorghum

SIVAGANGA

4.3 Tamil Nadu uplands		
Blocks covered	S .Pudur	
Growing season	2 nd week of July to 4 th week of Dec	
LGP(days)	150-180	
Rainfall (mm)	686	
Soil Type	Medium deep to clay soil and gravely mixed red clay soil	
Crops grown	<i>kharif</i>	Cotton, minor millets, paddy, pulses, sorghum, maize, sun flower, onion, sugar cane, turmeric, chillies, tapioca, vegetables.
	<i>Rabi</i>	Rice, , Sunflower, Cotton, black gram, vegetables
Crops suggested	<i>kharif</i>	Double cropping is possible Rice – Rice Millets – Rice Rice – Pulse Sunflower – Maize Cotton Banana / Sugarcane / Flowers
	<i>Rabi</i>	Sunflower, vegetables
5.2 Inland plains		
Blocks covered	part of Devakottai, Ilayankudi	
Growing season	3 rd week of Oct to 4 th week of Jan	
LGP(days)	90-120	
Rainfall (mm)	639	
Soil Type	Medium deep to deep black soil mixed with Red soil and gravely mixed black soil	
Crops grown	<i>kharif</i>	Rice, chillies, Millets, Sorghum, sugar cane, citrus, brinjal
	<i>Rabi</i>	Rice, black gram, green gram, cow pea, chillies, cotton, ragi
Crops suggested	<i>kharif</i>	Rice Sorghum Cumbu Ragi Maize Sunflower Pulses Casuarinas' / Eucalyptus

	<i>Rabi</i>	Rice, black gram, green gram, cow pea, Vegetables
5.3 Inland plains		
Blocks covered	Manamadurai, Thiruppuvanam	
Growing season	1 st week of Oct to 2 nd week of Feb	
LGP(days)	129-150	
Rainfall (mm)	592	
Soil Type	Medium deep to very deep black soil	
Crops grown	<i>kharif</i>	Cotton, minor millets, paddy, pulses, sorghum, maize, sun flower, onion, sugar cane, turmeric, chillies, tapioca, vegetables.
	<i>Rabi</i>	Rice, , Sunflower, Cotton, black gram, vegetables
Crops suggested	<i>kharif</i>	Double cropping Rice – Rice / Rice – Pulse, Cumbu/ Ragi/Maize/Sunflower – Rice, Rice- Groundnut Flowers
	<i>Rabi</i>	Rice, , Sunflower, Cotton
5.4 Inland plains		
Blocks covered	part of Devakottai, Kalayarkovil, Kallal, Kannangudi, Sakkottai, Singampuneri, Sivagangai, Thiruppathur	
Growing season	3 rd week of July to 3 rd week of Feb	
LGP(days)	150-180	
Rainfall (mm)	770	
Soil Type	Deep to very deep clay to gravelly mixed clay soil	
Crops grown	<i>kharif</i>	Rice, Sorghum, major and minor millets, Pulses, Cotton, Ground nut, Sesame, Chillies, Tapioca, sugar cane, red gram, vegetables, turmeric, sun flower,
	<i>Rabi</i>	Paddy, minor millets, sorghum, horse gram, Green gram, black gram, sugar cane, ragi, red gram, chillies, cotton.
Crops suggested	<i>kharif</i>	Double cropping Rice – Rice Rice – Pulse Millets (Maize) – Rice Cumbu/ Ragi/Maize/Sunflower - Rice Cotton Rice- Groundnut Flowers / Sugarcane / Banana Casuarina Groundnut - Rice
	<i>Rabi</i>	Paddy, horse gram, sugar cane, chillies, cotton.

CHENNAI

5.5 Inland plains		
Blocks covered	part of Chennai	
Growing season	3 rd week of July to 3 rd week of Feb	
LGP(days)	180-210	
Rainfall (mm)	865	
Soil Type	Deep to very deep clay to gravel mixed red clay soil	
Crops grown	<i>kharif</i>	Paddy, Groundnut, Sugarcane, Chola, Cumbu, Redgram, Tapioca, Greengram, Blackgram, Coriander, Banana, Maize, Varagu, Groundnut, Cashewnut and Coconut.
	<i>Rabi</i>	Cumbu, Redgram, Greengram, Blackgram, Coriander, Maize, Cotton, Gingelly
Crops suggested	<i>kharif</i>	Paddy, Groundnut, Sugarcane, Chola, Cumbu, Redgram, Tapioca, Greengram, Blackgram, Coriander, Banana, Maize, Varagu, Groundnut,
	<i>Rabi</i>	Coriander, Maize, Cotton, Gingelly
6.4 Coastal plains		
Blocks covered	part of Chennai	
Growing season	1 st week of Sep to 4 th week of Feb	
LGP(days)	180-210	
Rainfall (mm)	934	
Soil Type	Deep to very deep sandy soil	
Crops grown	<i>kharif</i>	Rice, Sorghum, maize, cumbu, banana, brinjal, water melon, Pulses, Cotton, sugar cane, red gram, vegetables, turmeric, sun flower,
	<i>Rabi</i>	Paddy, cumbu, ragi, , sorghum, , Green gram, black gram, sugar cane, ragi, cotton, sun flower
Crops suggested	<i>kharif</i>	Rice – Rice Sugarcane / Banana Rice – Rice –Rice fallow Pulses, Cowpea / Lab lab - Cotton Rainfed rice -

	<i>Rabi</i>	Paddy, cumbu, ragi, sorghum, Green gram, black gram, sugarcane
--	-------------	--

SALEM

3.1 Eastern Ghats		
Blocks covered	Kalathur, part of Nangavalli	
Growing season	2 nd week of July to 4 th week of Dec	
LGP(days)	150-180	
Rainfall (mm)	547	
Soil Type	Medium deep to deep gravely mixed alluvial and clay soil	
Crops grown	<i>kharif</i>	Sorghum, major millets and minor millets, turmeric, paddy, sugarcane, banana, vegetables, red gram, Bengal gram, horse gram, cow pea, sunflower, cotton
	<i>Rabi</i>	Maize, sorghum, minor millets, paddy, sugar cane and vegetables, Tapioca, Fruit crops
Crops suggested	<i>kharif</i>	Turmeric / Sugarcane / banana – with supplemental irrigation Rice – Rice Pulse – Rice Millets – Rice Cotton
	<i>Rabi</i>	sugar cane and vegetables, Cotton
4.3 Tamil Nadu uplands		
Blocks covered	Attur, Ayodhiyapattinam, Gangavalli, Idappadi, Kadayampatty, Konganapuram, Mac.donalds choultry, Mecheri, part of Nangavalli, Omalur, Pethanaickenpalayam, Salem, Sankari, part of Thalaivasal, Tharamangalam, Valapady, Veerapandi	
Growing season	2 nd week of July to 4 th week of Dec	
LGP(days)	150-180	
Rainfall (mm)	686	
Soil Type	Medium deep to clay soil and gravely mixed red clay soil	
Crops grown	<i>kharif</i>	Cotton, minor millets, paddy, pulses, sorghum, maize, sun flower, onion, sugar cane, turmeric, chillies, tapioca, vegetables.
	<i>Rabi</i>	Rice, , Sunflower, Cotton, black gram, vegetables
Crops suggested	<i>kharif</i>	Double cropping is possible Rice – Rice Millets – Rice Rice – Pulse Sunflower – Maize Cotton Banana / Sugarcane / Flowers
	<i>Rabi</i>	Sunflower, vegetables
4.4 Tamil Nadu uplands		
Blocks covered	Yercaud	
Growing season	2 nd week of June to 2 nd week of Nov	
LGP(days)	240-270	
Rainfall (mm)	688	
Soil Type	Medium deep to deep gravel and gravely mixed clay soil	
Crops grown	<i>kharif</i>	Crysanthimum, gerbera, Anthurium, Brinjal, Tomato, Chilles , capsicum, bush beans , cabbage, cauliflower, radish , beetroot, Carnation, Dahlia, Rose , Gerbera , Jasmine, Marigold
	<i>Rabi</i>	Cabbage, cauliflower, radish , beetroot, Carnation, Dahlia, Rose , Gerbera
Crops suggested	<i>kharif</i>	Cauliflower, Carrot, Beet root, radish, Tomato, Chilles , capsicum, bush beans
	<i>Rabi</i>	Gerbera , Jasmine, Marigold
5.3 Inland plains		
Blocks covered	part of Thalaivasal	
Growing season	1 st week of Oct to 2 nd week of Feb	
LGP(days)	129-150	
Rainfall (mm)	592	
Soil Type	Medium deep to very deep black soil	
Crops grown	<i>kharif</i>	Cotton, minor millets, paddy, pulses, sorghum, maize, sun flower, onion, sugar cane, turmeric, chillies, tapioca, vegetables.
	<i>Rabi</i>	Rice, , Sunflower, Cotton, black gram, vegetables
Crops	<i>kharif</i>	Double cropping Rice – Rice / Rice – Pulse, Cumbu/

suggested		Ragi/Maize/Sunflower – Rice, Rice- Groundnut Flowers
	<i>Rabi</i>	Rice, , Sunflower, Cotton

THANJAVUR

5.4 Inland plains

Blocks covered	Ammapettai, Budalur, Kumbakonam, Madukkur, Orathanadu, Papanasam, part of Pattukottai, Peravurani, part of Sethubavachatram, Thanjavur, Thiruppanandal, Thiruvaiyaru, Thiruvanam, Thiruvaidaimaruthur	
Growing season	3 rd week of July to 3 rd week of Feb	
LGP(days)	150-180	
Rainfall (mm)	770	
Soil Type	Deep to very deep clay to gravely mixed clay soil	
Crops grown	<i>kharif</i>	Rice, Sorghum, major and minor millets, Pulses, Cotton, Ground nut, Sesame, Chillies, Tapioca, sugar cane, red gram, vegetables, turmeric, sun flower,
	<i>Rabi</i>	Paddy, minor millets, sorghum, horse gram, Green gram, black gram, sugar cane, ragi, red gram, chillies, cotton.
Crops suggested	<i>kharif</i>	Double cropping Rice – Rice Rice – Pulse Millets (Maize) – Rice Cumbu/ Ragi/Maize/Sunflower - Rice Cotton Rice- Groundnut Flowers / Sugarcane / Banana Casuarina Groundnut - Rice
	<i>Rabi</i>	Paddy, horse gram, sugar cane, chillies, cotton.

6.2 Coastal plains

Blocks covered	part of Pattukottai, part of Sethubavachatram	
Growing season	1 st week of Oct to 3 rd week of Jan	
LGP(days)	90-120 d 806 mm	
Rainfall (mm)		
Soil Type	Sandy soil	
Crops grown	<i>kharif</i>	Rice, Pulses, cotton, Groundnut, Maize, Cumbu, Sesame
	<i>Rabi</i>	Paddy, Green gram, black gram, sugar cane, ragi, red gram, chillies, cotton.
Crops suggested	<i>kharif</i>	Rice Millets Maize Sunflower Pulses Groundnut Cotton
	<i>Rabi</i>	

DHARMAPURI

3.1 Eastern Ghats

Blocks covered	part of Karimangalam, part of Nallampalli, Palacode, Pennagaram	
Growing season	2 nd week of July to 4 th week of Dec	
LGP(days)	150-180	
Rainfall (mm)	547	
Soil Type	Medium deep to deep gravely mixed alluvial and clay soil	
Crops grown	<i>kharif</i>	Sorghum, major millets and minor millets, turmeric, paddy, sugarcane, banana, vegetables, red gram, Bengal gram, horse gram, cow pea, sunflower, cotton
	<i>Rabi</i>	Maize, sorghum, minor millets, paddy, sugar cane and vegetables, Tapioca, Fruit crops
Crops suggested	<i>kharif</i>	Turmeric / Sugarcane / banana – with supplemental irrigation Rice – Rice Pulse – Rice Millets – Rice Cotton
	<i>Rabi</i>	sugar cane and vegetables, Cotton

4.3 Tamil Nadu uplands

Blocks covered	Dharmapuri, Harur, part of Karimangalam, Morappur, part of Nallampalli, Pappireddipatti	
Growing season	2 nd week of July to 4 th week of Dec	
LGP(days)	150-180	
Rainfall (mm)	686	
Soil Type	Medium deep to clay soil and gravely mixed red clay soil	
Crops grown	<i>kharif</i>	Cotton, minor millets, paddy, pulses, sorghum, maize, sun flower, onion, sugar cane, turmeric, chillies, tapioca, vegetables.

	<i>Rabi</i>	Rice, , Sunflower, Cotton, black gram, vegetables
Crops suggested	<i>kharif</i>	Double cropping is possible Rice – Rice Millets – Rice Rice – Pulse Sunflower – Maize Cotton Banana / Sugarcane / Flowers
	<i>Rabi</i>	Sunflower, vegetables

DINDIGUL

2.1 South Sahyadri		
Blocks covered	Kodaikanal, part of Palani, part of Reddiarchatram	
Growing season	1 st week of May to 2 nd week of Feb	
LGP(days)	>270	
Rainfall (mm)	799	
Soil Type	Deep to medium deep alluvial with gravely clay soil	
Crops grown	<i>kharif</i>	Rice, Sorghum, Cumbu, maize, Bengal gram, red gram, black gram, cow pea, sugar cane, Cotton, brinjal, Chillies, tomato, banana, tapioca, millets.
	<i>Rabi</i>	Ragi, black gram, sorghum, cumbu, maize, kudirai vali, black gram, green gram,
Crops suggested	<i>kharif</i>	Banana, Vegetables, Fruit trees, Rice – Rice
	<i>Rabi</i>	Vegetables
4.2 Tamil Nadu uplands		
Blocks covered	Guziliamparai, part of Natham, Oddanchatram, part of Palani, Thoppampatti, Vadamadurai, Vedasandur	
Growing season	2 nd week of sep to 3 rd week of Dec	
LGP(days)	90-120	
Rainfall (mm)	565	
Soil Type	Deep to very deep gravely mixed clay soil	
Crops grown	<i>kharif</i>	Paddy, sorghum, maize, pulses, cotton, sugar cane, banana, chillies, onion, citrus, mango, amla, vegetables, tomato
	<i>Rabi</i>	Rice, black gram, horse gram, cow pea, onion, maize and sorghum
Crops suggested	<i>kharif</i>	Medium duration rice crop Rice – rice fallow pulse Millets Cotton Pulses / Sesame
	<i>Rabi</i>	Rice, black gram, horse gram, cow pea, onion, maize and sorghum
4.3 Tamil Nadu uplands		
Blocks covered	Athoor, Dindigul, part of Natham, Nilakkottai, part of Reddiarchatram, Shanarpatty, Vattalkundu	
Growing season	2 nd week of July to 4 th week of Dec	
LGP(days)	150-180	
Rainfall (mm)	686	
Soil Type	Medium deep to clay soil and gravely mixed red clay soil	
Crops grown	<i>kharif</i>	Cotton, minor millets, paddy, pulses, sorghum, maize, sun flower, onion, sugar cane, turmeric, chillies, tapioca, vegetables.
	<i>Rabi</i>	Rice, , Sunflower, Cotton, black gram, vegetables
Crops suggested	<i>kharif</i>	Double cropping is possible Rice – Rice Millets – Rice Rice – Pulse Sunflower – Maize Cotton Banana / Sugarcane / Flowers
	<i>Rabi</i>	Sunflower, vegetables

TIRUCHIRAPPALLI

4.3 Tamil Nadu uplands		
Blocks covered	part of Manachanallur, Manapparai, part of Manikandam, part of Marungapuri, part of Musiri, part of Pullambadi, Thathaingar pettai, part of Thottiyam, Thuraiyur, Uppiliyapuram, Vaiyampatti	
Growing season	2 nd week of July to 4 th week of Dec	
LGP(days)	150-180	
Rainfall (mm)	686	
Soil Type	Medium deep to clay soil and gravely mixed red clay soil	

Crops grown	<i>kharif</i>	Cotton, minor millets, paddy, pulses, sorghum, maize, sun flower, onion, sugar cane, turmeric, chillies, tapioca, vegetables.
	<i>Rabi</i>	Rice, , Sunflower, Cotton, black gram, vegetables
Crops suggested	<i>kharif</i>	Double cropping is possible Rice – Rice Millets – Rice Rice – Pulse Sunflower – Maize Cotton Banana / Sugarcane / Flowers
	<i>Rabi</i>	Sunflower, vegetables
5.3 Inland plains		
Blocks covered	Anthanallur, Lalgudi, part of Manachanallur, part of Manikandam, part of Marungapuri, part of Musiri, part of Pullambadi, Thiruverumbur, part of Thottiyam	
Growing season	1 st week of Oct to 2 nd week of Feb	
LGP(days)	129-150	
Rainfall (mm)	592	
Soil Type	Medium deep to very deep black soil	
Crops grown	<i>kharif</i>	Cotton, minor millets, paddy, pulses, sorghum, maize, sun flower, onion, sugar cane, turmeric, chillies, tapioca, vegetables.
	<i>Rabi</i>	Rice, , Sunflower, Cotton, black gram, vegetables
Crops suggested	<i>kharif</i>	Double cropping Rice – Rice / Rice – Pulse, Cumbu/ Ragi/Maize/Sunflower – Rice, Rice- Groundnut Flowers
	<i>Rabi</i>	Rice, , Sunflower, Cotton

TIRUNELVELI

2.1 South Sahyadri

Blocks covered	Ambasamudram, part of Kadayam, part of Kadayanallur, part of Kalakad, part of Shencottai, part of Tenkasi, part of Vasudevanallur	
Growing season	1st week of May to 2nd week of Feb	
LGP(days)	>270	
Rainfall (mm)	799	
Soil Type	Deep to medium deep alluvial with gravely clay soil	
Crops grown	<i>kharif</i>	Rice, Sorghum, Cumbu, maize, Bengal gram, red gram, black gram, cow pea, sugar cane, Cotton, brinjal, Chillies, tomato, banana, tapioca, millets.
	<i>Rabi</i>	Ragi, black gram, sorghum, cumbu, maize, kudirai vali, black gram, green gram,
Crops suggested	<i>kharif</i>	Banana, Vegetables, Fruit trees, Rice – Rice
	<i>Rabi</i>	Vegetables

5.1 Inland plains

Blocks covered	part of Kalakad, Nanguneri, part of Rathapuram, Valliyur	
Growing season	3 rd week of Oct to 2 nd week of Jan	
LGP(days)	<90	
Rainfall (mm)	818	
Soil Type	Medium deep to red soil. Gravel mixed clay and alluvial red soil	
Crops grown	<i>kharif</i>	Rice, Sorghum, Cumbu, maize, red gram, black gram, cow pea, sugar cane, Cotton, brinjal, Chillies, tomato, banana, tapioca, millets.
	<i>Rabi</i>	Ragi, black gram, sorghum, cumbu, maize, kudirai vali, black gram, green gram.
Crops suggested	<i>kharif</i>	Millets Cumbu Ragi, Fodder Maize Sunflower
	<i>Rabi</i>	Ragi,black gram,sorghum, cumbu, maize, kudirai vali, black gram, green gram.

6.1 Coastal plains

Blocks covered	part of Rathapuram	
Growing season	3 rd week of Oct to 2 nd week of Jan	
LGP(days)	<90	
Rainfall (mm)	870	
Soil Type	Very deep sandy soil	
Crops grown	<i>kharif</i>	Rice, Sorghum, Cumbu, maize, red gram, black gram, cow pea, sugar cane, Cotton, brinjal, Chillies, tomato, banana, tapioca, millets.

	<i>Rabi</i>	Ragi, black gram, sorghum, cumbu, maize, kudirai vali, black gram, green gram, . Cow pea, cotton, chillies
Crops suggested	<i>kharif</i>	Millets Cumbu Ragi Maize Sunflower Semidry rice
	<i>Rabi</i>	Maize, kudirai vali, black gram, green gram, Cow pea, cotton, chillies

TIRUPPUR

2.1 South Sahyadri		
Blocks covered	part of Udumalaipettai	
Growing season	1 st week of May to 2 nd week of Feb	
LGP(days)	>270	
Rainfall (mm)	799	
Soil Type	Deep to medium deep alluvial with gravely clay soil	
Crops grown	<i>kharif</i>	Cholam, maize, redgram, black gram, Bengal gram, horse gram, lab lab, cow pea, vegetables, curry leaf, mango, banana, cotton, sugarcane, paddy
	<i>Rabi</i>	Sorghum, maize, pulses, onion, sun flower, cotton
Crops suggested	<i>kharif</i>	Double crop, Rice – Rice, Maize – Rice, Rice – Rice – Pulse, Maize – Redgram, Green gram – Cotton, Sugarcane/ Banana
	<i>Rabi</i>	Maize - Redgram
4.1 Tamil Nadu uplands		
Blocks covered	Avinashi, Dharapuram, Gudimangalam, Kangayam, Kundadam, Madathukulam, Moolanur, Palladam, Pongalur, Tiruppur, part of Udumalaipettai, Vellakoil	
Growing season	2 nd week of Oct to 1 st week of Jan	
LGP(days)	<90	
Rainfall (mm)	541	
Soil Type	Deep to very deep gravely mixed alluvial and clay soil	
Crops grown	<i>kharif</i>	Cholam, maize, redgram, black gram, Bengal gram, horse gram, , vegetables, onion , banana, sun flower, cotton, tomato sugarcane, paddy, turmeric
	<i>Rabi</i>	Maize, sorghum, onion, pulses, sun flower, sugar cane, cotton, , millets.
Crops suggested	<i>kharif</i>	Rainfed single crop Pulses (Green gram / Black gram) Grain sorghum Maize With supplemental irrigation Cotton (Aug – Feb) Vegetables
	<i>Rabi</i>	Pulses (Green gram / Black gram) Grain sorghum Maize
4.2 Tamil Nadu uplands		
Blocks covered	Uthukuli	
Growing season	2 nd week of sep to 3 rd week of Dec	
LGP(days)	90-120	
Rainfall (mm)	565	
Soil Type	Deep to very deep gravely mixed clay soil	
Crops grown	<i>kharif</i>	Paddy, sorghum, maize, pulses, cotton, sugar cane, banana, chillies, onion, citrus, mango, amla, vegetables, tomato
	<i>Rabi</i>	Rice, black gram, horse gram, cow pea, onion, maize and sorghum
Crops suggested	<i>kharif</i>	Medium duration rice crop Rice – rice fallow pulse Millets Cotton Pulses / Sesame
	<i>Rabi</i>	Rice, black gram, horse gram, cow pea, onion, maize and sorghum

TIRUVANNAMALAI

4.3 Tamil Nadu uplands		
Blocks covered	part of Arni, Chengam, Jawadhu hills, part of Kalasapakam, part of Polur, part of Pudupalayam, Thandrampet, part of West arani	
Growing season	2 nd week of July to 4 th week of Dec	
LGP(days)	150-180	
Rainfall (mm)	686	

Soil Type		Medium deep to clay soil and gravely mixed red clay soil
Crops grown	<i>kharif</i>	Cotton, minor millets, paddy, pulses, sorghum, maize, sun flower, onion, sugar cane, turmeric, chillies, tapioca, vegetables.
	<i>Rabi</i>	Rice, , Sunflower, Cotton, black gram, vegetables
Crops suggested	<i>kharif</i>	Double cropping is possible Rice – Rice Millets – Rice Rice – Pulse Sunflower – Maize Cotton Banana / Sugarcane / Flowers
	<i>Rabi</i>	Sunflower, vegetables
5.3 Inland plains		
Blocks covered		part of Pudupalayam
Growing season		1 st week of Oct to 2 nd week of Feb
LGP(days)		129-150
Rainfall (mm)		592
Soil Type		Medium deep to very deep black soil
Crops grown	<i>kharif</i>	Cotton, minor millets, paddy, pulses, sorghum, maize, sun flower, onion, sugar cane, turmeric, chillies, tapioca, vegetables.
	<i>Rabi</i>	Rice, , Sunflower, Cotton, black gram, vegetables
Crops suggested	<i>kharif</i>	Double cropping Rice – Rice / Rice – Pulse, Cumbu/ Ragi/Maize/Sunflower – Rice, Rice- Groundnut Flowers
	<i>Rabi</i>	Rice, , Sunflower, Cotton
5.4 Inland plains		
Blocks covered		Anakkavur, part of Arni, Chetpet, Cheyyar, part of Kalasapakam, Keelpennathur, Peranamallur, part of Polur, Thellar, Thuringapuram, Tiruvannamalai, Vandavasi, Vembakkam, part of West arani
Growing season		3 rd week of July to 3 rd week of Feb
LGP(days)		150-180
Rainfall (mm)		770
Soil Type		Deep to very deep clay to gravely mixed clay soil
Crops grown	<i>kharif</i>	Rice, Sorghum, major and minor millets, Pulses, Cotton, Ground nut, Sesame, Chillies, Tapioca, sugar cane, red gram, vegetables, turmeric, sun flower,
	<i>Rabi</i>	Paddy, minor millets, sorghum, horse gram, Green gram, black gram, sugar cane, ragi, red gram, chillies, cotton.
Crops suggested	<i>kharif</i>	Double cropping Rice – Rice Rice – Pulse Millets (Maize) – Rice Cumbu/ Ragi/Maize/Sunflower - Rice Cotton Rice- Groundnut Flowers / Sugarcane / Banana Casuarina Groundnut - Rice
	<i>Rabi</i>	Paddy, horse gram, sugar cane, chillies, cotton.

THIRUVALLUR

3.1 Eastern Ghats		
Blocks covered		Pallipattu, part of Poondi, R.K.pet, Tiruttani, Tiruvelankadu
Growing season		2 nd week of July to 4 th week of Dec
LGP(days)		150-180
Rainfall (mm)		547
Soil Type		Medium deep to deep gravely mixed alluvial and clay soil
Crops grown	<i>kharif</i>	Sorghum, major millets and minor millets, turmeric, paddy, sugarcane, banana, vegetables, red gram, Bengal gram, horse gram, cow pea, sunflower, cotton
	<i>Rabi</i>	Maize, sorghum, minor millets, paddy, sugar cane and vegetables, Tapioca, Fruit crops
Crops suggested	<i>kharif</i>	Turmeric / Sugarcane / banana – with supplemental irrigation Rice – Rice Pulse – Rice Millets – Rice Cotton
	<i>Rabi</i>	sugar cane and vegetables, Cotton
5.5 Inland plains		
Blocks covered		Ellapuram, Gummidipoondi, Kadambathur, part of Minjur, Poonamallee, part of Poondi, Pulal, Sholavaram, Tiruvallur, Villivakkam
Growing season		3 rd week of July to 3 rd week of Feb
LGP(days)		180-210
Rainfall (mm)		865

Soil Type		Deep to very deep clay to gravel mixed red clay soil
Crops grown	<i>kharif</i>	Paddy, Groundnut, Sugarcane, Cholam, Cumbu, Redgram, Tapioca, Greengram, Blackgram, Coriander, Banana, Maize, Varagu, Groundnut, Cashewnut and Coconut.
	<i>Rabi</i>	Cumbu, Redgram, Greengram, Blackgram, Coriander, Maize, Cotton, Gingelly
Crops suggested	<i>kharif</i>	Paddy, Groundnut, Sugarcane, Cholam, Cumbu, Redgram, Tapioca, Greengram, Blackgram, Coriander, Banana, Maize, Varagu, Groundnut,
	<i>Rabi</i>	Coriander, Maize, Cotton, Gingelly
6.4 Coastal plains		
Blocks covered		part of Minjur
Growing season		1 st week of sep to 4 th week of Feb
LGP(days)		180-210
Rainfall (mm)		934
Soil Type		Deep to very deep sandy soil
Crops grown	<i>kharif</i>	Rice, Sorghum, maize, cumbu, banana, brinjal, water melon, Pulses, Cotton, sugar cane, red gram, vegetables, turmeric, sun flower,
	<i>Rabi</i>	Paddy, cumbu, ragi, , sorghum, , Green gram, black gram, sugar cane, ragi, cotton, sun flower
Crops suggested	<i>kharif</i>	Rice – Rice Sugarcane / Banana Rice – Rice –Rice fallow Pulses, Cowpea / Lab lab - Cotton Rainfed rice -
	<i>Rabi</i>	Paddy, cumbu, ragi, sorghum, Green gram, black gram, sugarcane

THIRUVARUR

5.4 Inland plains		
Blocks covered		Koradacheri, Kottur, Kudavasal, Mannargudi, part of Muthupettai, Nannilam, Needamangalam, part of Thiruthuraipoondi, Thiruvapur, Valangaiman
Growing season		3 rd week of july to 3 rd week of feb
LGP(days)		150-180
Rainfall (mm)		770
Soil Type		Deep to very deep clay to gravelly mixed clay soil
Crops grown	<i>kharif</i>	Rice, Sorghum, major and minor millets, Pulses, Cotton, Ground nut, Sesame, Chillies, Tapioca, sugar cane, red gram, vegetables, turmeric, sun flower,
	<i>Rabi</i>	Paddy, minor millets, sorghum, horse gram, Green gram, black gram, sugar cane, ragi, red gram, chillies, cotton.
Crops suggested	<i>kharif</i>	Double cropping Rice – Rice Rice – Pulse Millets (Maize) – Rice Cumbu/ Ragi/Maize/Sunflower - Rice Cotton Rice- Groundnut Flowers / Sugarcane / Banana Casuarina Groundnut - Rice
	<i>Rabi</i>	Paddy, horse gram, sugar cane, chillies, cotton.
6.3 Coastal plains		
Blocks covered		part of Muthupettai, part of Thiruthuraipoondi
Growing season		1 st week of Oct to 2 nd week of March
LGP(days)		150-180
Rainfall (mm)		980
Soil Type		Deep to very deep sandy soil
Crops grown	<i>kharif</i>	Rice, sugar cane, banana, citrus
	<i>Rabi</i>	Paddy, black gram, sugar cane.
Crops suggested	<i>kharif</i>	Rice – Rice Rice – Groundnut Vegetables Green manure – Rice – Pulse Pulses – vegetables Cashew Fruit trees
	<i>Rabi</i>	Paddy, black gram, sugarcane

THENI

2.1 South Sahyadri		
Blocks covered		Aundipatti, Bodi, part of Chinnamanur, part of Cumbum, Kadamalaigundu-myladumparai, part of Theni, part of Uthamapalayam

Growing season	1 st week of May to 2 nd week of Feb	
LGP(days)	>270	
Rainfall (mm)	799	
Soil Type	Deep to medium deep alluvial with gravely clay soil	
Crops grown	<i>kharif</i>	Rice, Sorghum, Cumbu, maize, Bengal gram, red gram, black gram, cow pea, sugar cane, Cotton, brinjal, Chillies, tomato, banana, tapioca, millets.
	<i>Rabi</i>	Ragi, black gram, sorghum, cumbu, maize, kudirai vali, black gram, green gram,
Crops suggested	<i>kharif</i>	Banana, Vegetables, Fruit trees, Rice – Rice
	<i>Rabi</i>	Vegetables
4.2 Tamil Nadu uplands		
Blocks covered	part of Chinnamanur, part of Cumbum, Periyakulam, part of Theni, part of Uthamapalayam	
Growing season	2 nd week of sep to 3 rd week of Dec	
LGP(days)	90-120	
Rainfall (mm)	565	
Soil Type	Deep to very deep gravely mixed clay soil	
Crops grown	<i>kharif</i>	Paddy, sorghum, maize, pulses, cotton, sugar cane, banana, chillies, onion, citrus, mango, amla, vegetables, tomato
	<i>Rabi</i>	Rice, black gram, horse gram, cow pea, onion, maize and sorghum
Crops suggested	<i>kharif</i>	Medium duration rice crop Rice – rice fallow pulse Millets Cotton Pulses / Sesame
	<i>Rabi</i>	Rice, black gram, horse gram, cow pea, onion, maize and sorghum

THOOTHUKKUDI

5.1 Inland plains		
Blocks covered	part of Alwarthirunagari, Karunkulam, Ottapidaram, part of Pudur, Srivaikundam, part of Tuticorin, Vilathikulam	
Growing season	3 rd week of Oct to 2 nd week of Jan	
LGP(days)	<90	
Rainfall (mm)	818	
Soil Type	Medium deep to red soil. Gravel mixed clay and alluvial red soil	
Crops grown	<i>kharif</i>	Rice, Sorghum, Cumbu, maize, red gram, black gram, cow pea, sugar cane, Cotton, brinjal, Chillies, tomato, banana, tapioca, millets.
	<i>Rabi</i>	Ragi, black gram, sorghum, cumbu, maize, kudirai vali, black gram, green gram.
Crops suggested	<i>kharif</i>	Millets Cumbu Ragi, Fodder Maize Sunflower
	<i>Rabi</i>	Ragi, black gram, sorghum, cumbu, maize, kudirai vali, black gram, green gram
5.2 Inland plains		
Blocks covered	Kayathar, Kovilpatti, part of Pudur Tirunelveli Alangulam, Cheranmahadevi, part of Kadayam, part of Kadayanallur, Keelapavoor, Kuruvikulam, Manur, Melaneelithanallur, Palayamkottai, Pappakudi, Sankarankovil, part of Shencottai, part of Tenkasi, part of Vasudevanallur	
Growing season	3 rd week of Oct to 4 th week of Jan	
LGP(days)	90-120	
Rainfall (mm)	639	
Soil Type	Medium deep to deep black soil mixed with Red soil and gravely mixed black soil	
Crops grown	<i>kharif</i>	Rice, chillies, Millets, Sorghum, sugar cane, citrus, brinjal
	<i>Rabi</i>	Rice, black gram, green gram, cow pea, chillies, cotton, ragi
Crops suggested	<i>kharif</i>	Rice Sorghum Cumbu Ragi Maize Sunflower Pulses Casuarinas' / Eucalyptus
	<i>Rabi</i>	Rice, black gram, green gram, cow pea, Vegetables
6.1 Coastal plains		

Blocks covered	part of Alwarthirunagari, Sathankulam, Thiuchendur, part of Tuticorin, Udangudi	
Growing season	3 rd week of Oct to 2 nd week of Jan	
LGP(days)	<90	
Rainfall (mm)	870	
Soil Type	Very deep sandy soil	
Crops grown	<i>kharif</i>	Rice, Sorghum, Cumbu, maize, red gram, black gram, cow pea, sugar cane, Cotton, brinjal, Chillies, tomato, banana, tapioca, millets.
	<i>Rabi</i>	Ragi, black gram, sorghum, cumbu, maize, kudirai vali, black gram, green gram, . Cow pea, cotton, chillies
Crops suggested	<i>kharif</i>	Milllets Cumbu Ragi Maize Sunflower Semidry rice
	<i>Rabi</i>	Maize, kudirai vali, black gram, green gram, Cow pea, cotton, chillies

NAGAPATTINAM

5.4 Inland plains

Blocks covered	Kilvelur, part of Kollidam, Kuthalam, Mayiladuthurai, part of Nagappattinam, Sembanarkoil, part of Sirkali, part of Talanayar, Thirumarugal	
Growing season	3 rd week of July to 3 rd week of Feb	
LGP(days)	150-180	
Rainfall (mm)	770	
Soil Type	Deep to very deep clay to gravely mixed clay soil	
Crops grown	<i>kharif</i>	Rice, Sorghum, major and minor millets, Pulses, Cotton, Ground nut, Sesame, Chillies, Tapioca, sugar cane, red gram, vegetables, turmeric, sun flower,
	<i>Rabi</i>	Paddy, minor millets, sorghum, horse gram, Green gram, black gram, sugar cane, ragi, red gram, chillies, cotton.
Crops suggested	<i>kharif</i>	Double cropping Rice – Rice Rice – Pulse Millets (Maize) – Rice Cumbu/ Ragi/Maize/Sunflower - Rice Cotton Rice- Groundnut Flowers / Sugarcane / Banana Casuarina Groundnut - Rice
	<i>Rabi</i>	Paddy, horse gram, sugar cane, chillies, cotton.

6.3 Coastal plains

Blocks covered	Keelaiyur, part of Kollidam, part of Nagappattinam, part of Sirkali, part of Talanayar, Vedharanyam,	
Growing season	1 st week of Oct to 2 nd week of March	
LGP(days)	150-180	
Rainfall (mm)	980	
Soil Type	Deep to very deep sandy soil	
Crops grown	<i>kharif</i>	Rice, sugar cane, banana, citrus
	<i>Rabi</i>	Paddy, black gram, sugar cane.
Crops suggested	<i>kharif</i>	Rice – Rice Rice – Groundnut Vegetables Green manure – Rice – Pulse Pulses – vegetables Cashew Fruit trees
	<i>Rabi</i>	Paddy, black gram, sugarcane

NAMAKKAL

4.3 Tamil Nadu uplands

Blocks covered	Elachipalayam, Erumaipatti, part of Kabilarmalai, Kolli hills, Mallasamudram, Mohanur, Namagiripet, Namakkal, part of Pallipalayam, Paramathi, Pudukhatram, Rasipuram, Sendamangalam, Tiruchengodu, Vennandur	
Growing season	2 nd week of July to 4 th week of Dec	
LGP(days)	150-180	
Rainfall (mm)	686	
Soil Type	Medium deep to clay soil and gravely mixed red clay soil	
Crops grown	<i>kharif</i>	Cotton, minor millets, paddy, pulses, sorghum, maize, sun flower, onion, sugar cane, turmeric, chillies, tapioca, vegetables.
	<i>Rabi</i>	Rice, , Sunflower, Cotton, black gram, vegetables

Crops suggested	<i>kharif</i>	Double cropping is possible Rice – Rice Millets – Rice Rice – Pulse Sunflower – Maize Cotton Banana / Sugarcane / Flowers
	<i>Rabi</i>	Sunflower, vegetables
5.3 Inland plains		
Blocks covered	part of Kabilarmalai, part of Pallipalayam	
Growing season	1 st week of Oct to 2 nd week of Feb	
LGP(days)	129-150	
Rainfall (mm)	592	
Soil Type	Medium deep to very deep black soil	
Crops grown	<i>kharif</i>	Cotton, minor millets, paddy, pulses, sorghum, maize, sun flower, onion, sugar cane, turmeric, chillies, tapioca, vegetables.
	<i>Rabi</i>	Rice, , Sunflower, Cotton, black gram, vegetables
Crops suggested	<i>kharif</i>	Double cropping Rice – Rice / Rice – Pulse, Cumbu/ Ragi/Maize/Sunflower – Rice, Rice- Groundnut Flowers
	<i>Rabi</i>	Rice, , Sunflower, Cotton

THE NILGIRIS

1.1		
Blocks covered	Gudalur, part of Udthagamandalam	
Growing season	1 st week of June to 1 st week of Jan	
LGP(days)	210-240	
Rainfall (mm)	1724	
Soil Type	Deep to medium deep clay and gravely red clay soil	
Crops grown	<i>kharif</i>	Tea, coffee, spices and condiments, ginger, radish, French bean, Peas, Cauliflower, Carrot, beet root, Greens, Potato
	<i>Rabi</i>	Potato, banana, ginger, pepper, coffee, tea
Crops suggested	<i>kharif</i>	Two crops can be taken up in one year, Cauliflower, Carrot, Beet root, Potato, Greens
	<i>Rabi</i>	Potato
1.2		
Blocks covered	Coonoor, Kothagiri, part of Udthagamandalam	
Growing season	1 st week of June to 1 st week of Feb	
LGP(days)	240-270	
Rainfall (mm)	1356	
Soil Type	Deep to medium deep clay and gravely red clay soil	
Crops grown	<i>kharif</i>	Tea, coffee, spices and condiments, ginger, radish, French bean, Peas, Cauliflower, Carrot, beet root, Greens, Potato
	<i>Rabi</i>	Potato, banana, ginger, pepper, coffee, tea
Crops suggested	<i>kharif</i>	Two crops can be taken up in one year, Cauliflower, Carrot, Beet root, Potato, Greens
	<i>Rabi</i>	Potato

PUDUKKOTTAI

4.3 Tamil Nadu uplands		
Blocks covered	part of Ponnamaravathi	
Growing season	2nd week of July to 4th week of Dec	
LGP(days)	150-180	
Rainfall (mm)	686	
Soil Type	Medium deep to clay soil and gravely mixed red clay soil	
Crops grown	<i>kharif</i>	Cotton, minor millets, paddy, pulses, sorghum, maize, sun flower, onion, sugar cane, turmeric, chillies, tapioca, vegetables.
	<i>Rabi</i>	Rice, , Sunflower, Cotton, black gram, vegetables
Crops suggested	<i>kharif</i>	Double cropping is possible Rice – Rice Millets – Rice Rice – Pulse Sunflower – Maize Cotton Banana / Sugarcane / Flowers
	<i>Rabi</i>	Sunflower, vegetables
5.3 Inland plains		

Blocks covered	Annavaasal	
Growing season	1st week of Oct to 2nd week of Feb	
LGP(days)	129-150	
Rainfall (mm)	592	
Soil Type	Medium deep to very deep black soil	
Crops grown	<i>kharif</i>	Cotton, minor millets, paddy, pulses, sorghum, maize, sun flower, onion, sugar cane, turmeric, chillies, tapioca, vegetables.
	<i>Rabi</i>	Rice, , Sunflower, Cotton, black gram, vegetables
Crops suggested	<i>kharif</i>	Double cropping Rice – Rice / Rice – Pulse, Cumbu/ Ragi/Maize/Sunflower – Rice, Rice- Groundnut Flowers
	<i>Rabi</i>	Rice, , Sunflower, Cotton

5.4 Inland plains

Blocks covered	Aranthangi, Arimalam, Avudayarkoil, Gandarvakkottai, Karambakkudi, Kunnandarkovil, part of Manamelkudi, part of Ponnamaravathi, Pudukkottai, Thirumayam, Thiruvarankulam, Viralimalai	
Growing season	3 rd week of July to 3 rd week of Feb	
LGP(days)	150-180	
Rainfall (mm)	770	
Soil Type	Deep to very deep clay to gravely mixed clay soil	
Crops grown	<i>kharif</i>	Rice, Sorghum, major and minor millets, Pulses, Cotton, Ground nut, Sesame, Chillies, Tapioca, sugar cane, red gram, vegetables, turmeric, sun flower,
	<i>Rabi</i>	Paddy, minor millets, sorghum, horse gram, Green gram, black gram, sugar cane, ragi, red gram, chillies, cotton.
Crops suggested	<i>kharif</i>	Double cropping Rice – Rice Rice – Pulse Millets (Maize) – Rice Cumbu/ Ragi/Maize/Sunflower - Rice Cotton Rice- Groundnut Flowers / Sugarcane / Banana Casuarina Groundnut - Rice
	<i>Rabi</i>	Paddy, horse gram, sugar cane, chillies, cotton.

6.2 Coastal plains

Blocks covered	part of Manamelkudi	
Growing season	1 st week of Oct to 3 rd week of Jan	
LGP(days)	90-120 d 806 mm	
Rainfall (mm)		
Soil Type	Sandy soil	
Crops grown	<i>kharif</i>	Rice, Pulses, cotton, Groundnut, Maize, Cumbu, Sesame
	<i>Rabi</i>	Paddy, Green gram, black gram, sugar cane, ragi, red gram, chillies, cotton.
Crops suggested	<i>kharif</i>	Rice Millets Maize Sunflower Pulses Groundnut Cotton
	<i>Rabi</i>	

PERAMBALUR

4.3 Tamil Nadu uplands

Blocks covered	part of Alathur, part of Perambalur	
Growing season	2 nd week of July to 4 th week of Dec	
LGP(days)	150-180	
Rainfall (mm)	686	
Soil Type	Medium deep to clay soil and gravely mixed red clay soil	
Crops grown	<i>kharif</i>	Cotton, minor millets, paddy, pulses, sorghum, maize, sun flower, onion, sugar cane, turmeric, chillies, tapioca, vegetables.
	<i>Rabi</i>	Rice, , Sunflower, Cotton, black gram, vegetables
Crops suggested	<i>kharif</i>	Double cropping is possible Rice – Rice Millets – Rice Rice – Pulse Sunflower – Maize Cotton Banana / Sugarcane / Flowers
	<i>Rabi</i>	Sunflower, vegetables

5.3 Inland plains

Blocks covered	Veppanthattai	
Growing season	1 st week of Oct to 2 nd week of Feb	

LGP(days)	129-150	
Rainfall (mm)	592	
Soil Type	Medium deep to very deep black soil	
Crops grown	<i>kharif</i>	Cotton, minor millets, paddy, pulses, sorghum, maize, sun flower, onion, sugar cane, turmeric, chillies, tapioca, vegetables.
	<i>Rabi</i>	Rice, , Sunflower, Cotton, black gram, vegetables
Crops suggested	<i>kharif</i>	Double cropping Rice – Rice / Rice – Pulse, Cumbu/ Ragi/Maize/Sunflower – Rice, Rice- Groundnut Flowers
	<i>Rabi</i>	Rice, , Sunflower, Cotton
5.4 Inland plains		
Blocks covered	part of Alathur, part of Perambalur, Veppur	
Growing season	3 rd week of July to 3 rd week of Feb	
LGP(days)	150-180	
Rainfall (mm)	770	
Soil Type	Deep to very deep clay to gravely mixed clay soil	
Crops grown	<i>kharif</i>	Rice, Sorghum, major and minor millets, Pulses, Cotton, Ground nut, Sesame, Chillies, Tapioca, sugar cane, red gram, vegetables, turmeric, sun flower,
	<i>Rabi</i>	Paddy, minor millets, sorghum, horse gram, Green gram, black gram, sugar cane, ragi, red gram, chillies, cotton.
Crops suggested	<i>kharif</i>	Double cropping Rice – Rice Rice – Pulse Millets (Maize) – Rice Cumbu/ Ragi/Maize/Sunflower - Rice Cotton Rice- Groundnut Flowers / Sugarcane / Banana Casuarina Groundnut - Rice

MADURAI

2.1 South Sahyadri		
Blocks covered	part of Sedapatty, part of Usilampatty	
Growing season	1 st week of May to 2 nd week of Feb	
LGP(days)	>270	
Rainfall (mm)	799	
Soil Type	Deep to medium deep alluvial with gravely clay soil	
Crops grown	<i>kharif</i>	Rice, Sorghum, Cumbu, maize, Bengal gram, red gram, black gram, cow pea, sugar cane, Cotton, brinjal, Chillies, tomato, banana, tapioca, millets.
	<i>Rabi</i>	Ragi, black gram, sorghum, cumbu, maize, kudirai vali, black gram, green gram,
Crops suggested	<i>kharif</i>	Banana, Vegetables, Fruit trees, Rice – Rice
	<i>Rabi</i>	Vegetables
4.3 Tamil Nadu uplands		
Blocks covered	part of Alanganallur, part of Kottampatti, part of Vadipatti	
Growing season	2 nd week of July to 4 th week of Dec	
LGP(days)	150-180	
Rainfall (mm)	686	
Soil Type	Medium deep to clay soil and gravely mixed red clay soil	
Crops grown	<i>kharif</i>	Cotton, minor millets, paddy, pulses, sorghum, maize, sun flower, onion, sugar cane, turmeric, chillies, tapioca, vegetables.
	<i>Rabi</i>	Rice, , Sunflower, Cotton, black gram, vegetables
Crops suggested	<i>kharif</i>	Double cropping is possible Rice – Rice Millets – Rice Rice – Pulse Sunflower – Maize Cotton Banana / Sugarcane / Flowers
	<i>Rabi</i>	Sunflower, vegetables
5.2 Inland plains		
Blocks covered	Chellampatty, part of Sedapatty, part of Usilampatty	
Growing season	3 rd week of Oct to 4 th week of Jan	
LGP(days)	90-120	
Rainfall (mm)	639	
Soil Type	Medium deep to deep black soil mixed with Red soil and gravely mixed black soil	

Crops grown	<i>kharif</i>	Rice, chillies, Millets, Sorghum, sugar cane, citrus, brinjal
	<i>Rabi</i>	Rice, black gram, green gram, cow pea, chillies, cotton, ragi
Crops suggested	<i>kharif</i>	Rice Sorghum Cumbu Ragi Maize Sunflower Pulses Casuarinas' / Eucalyptus
	<i>Rabi</i>	Rice, black gram, green gram, cow pea, Vegetables
5.3 Inland plains		
Blocks covered	part of Alanganallur, Kallikudi, part of Kottampatti, Madurai east, Madurai west, Melur, T.Kallupatti, Thirumangalam, Thirupparankundram, part of Vadipatti	
Growing season	1 st week of Oct to 2 nd week of Feb	
LGP(days)	129-150	
Rainfall (mm)	592	
Soil Type	Medium deep to very deep black soil	
Crops grown	<i>kharif</i>	Cotton, minor millets, paddy, pulses, sorghum, maize, sun flower, onion, sugar cane, turmeric, chillies, tapioca, vegetables.
	<i>Rabi</i>	Rice, , Sunflower, Cotton, black gram, vegetables
Crops suggested	<i>kharif</i>	Double cropping Rice – Rice / Rice – Pulse, Cumbu/ Ragi/Maize/Sunflower – Rice, Rice- Groundnut Flowers
	<i>Rabi</i>	Rice, , Sunflower, Cotton

VIRUDHUNAGAR

2.1 South Sahyadri		
Blocks covered	part of Watrap	
Growing season	1 st week of May to 2 nd week of Feb	
LGP(days)	>270	
Rainfall (mm)	799	
Soil Type	Deep to medium deep alluvial with gravely clay soil	
Crops grown	<i>kharif</i>	Rice, Sorghum, Cumbu, maize, Bengal gram, red gram, black gram, cow pea, sugar cane, Cotton, brinjal, Chillies, tomato, banana, tapioca, millets.
	<i>Rabi</i>	Ragi, black gram, sorghum, cumbu, maize, kudirai vali, black gram, green gram,
Crops suggested	<i>kharif</i>	Banana, Vegetables Fruit trees Rice – Rice
	<i>Rabi</i>	Vegetables
5.2 Inland plains		
Blocks covered	Rajapalayam, Sathur, Sivakasi, Sriviliputhur, Vembakottai, Virudhunager, part of Watrap	
Growing season	3 rd week of Oct to 4 th week of Jan	
LGP(days)	90-120	
Rainfall (mm)	639	
Soil Type	Medium deep to deep black soil mixed with Red soil and gravely mixed black soil	
Crops grown	<i>kharif</i>	Rice, chillies, Millets, Sorghum, sugar cane, citrus, brinjal
	<i>Rabi</i>	Rice, black gram, green gram, cow pea, chillies, cotton, ragi
Crops suggested	<i>kharif</i>	Rice Sorghum Cumbu Ragi Maize Sunflower Pulses Casuarinas' / Eucalyptus
	<i>Rabi</i>	Rice, black gram, green gram, cow pea, Vegetables
5.3 Inland plains		
Blocks covered	Aruppukottai, Kariapatti, Narikudi, Tiruchuli	
Growing season	1 st week of Oct to 2 nd week of Feb	
LGP(days)	129-150	
Rainfall (mm)	592	
Soil Type	Medium deep to very deep black soil	
Crops grown	<i>kharif</i>	Cotton, minor millets, paddy, pulses, sorghum, maize, sun flower, onion, sugar cane, turmeric, chillies, tapioca, vegetables.
	<i>Rabi</i>	Rice, , Sunflower, Cotton, black gram, vegetables
Crops	<i>kharif</i>	Double cropping Rice – Rice / Rice – Pulse, Cumbu/

suggested		Ragi/Maize/Sunflower – Rice, Rice- Groundnut Flowers
	<i>Rabi</i>	Rice, , Sunflower, Cotton
	<i>Rabi</i>	Paddy, horse gram, sugar cane, chillies, cotton.

VILUPPURAM

4.3 Tamil Nadu uplands		
Blocks covered	part of Chinnasalem, part of Kallakurichi, Kalrayanhills, part of Sankarapuram	
Growing season	2 nd week of July to 4 th week of Dec	
LGP(days)	150-180	
Rainfall (mm)	686	
Soil Type	Medium deep to clay soil and gravely mixed red clay soil	
Crops grown	<i>kharif</i>	Cotton, minor millets, paddy, pulses, sorghum, maize, sun flower, onion, sugar cane, turmeric, chillies, tapioca, vegetables.
	<i>Rabi</i>	Rice, , Sunflower, Cotton, black gram, vegetables
Crops suggested	<i>kharif</i>	Double cropping is possible Rice – Rice Millets – Rice Rice – Pulse Sunflower – Maize Cotton Banana / Sugarcane / Flowers
	<i>Rabi</i>	Sunflower, vegetables
5.4 Inland plains		
Blocks covered	part of Chinnasalem, Gingee, part of Kallakurichi, Kanai, Kandamangalam, Koliyanur, Melmalaiyanur, Mugaiyur, Rishivandiyam, part of Sankarapuram, Thiagadurugam, Thirukoilur, Thirunavalur, Thiruvannainallur, Ulundurpet, Vallam, Vikravandi	
Growing season	3 rd week of July to 3 rd week of Feb	
LGP(days)	150-180	
Rainfall (mm)	770	
Soil Type	Deep to very deep clay to gravely mixed clay soil	
Crops grown	<i>kharif</i>	Rice, Sorghum, major and minor millets, Pulses, Cotton, Ground nut, Sesame, Chillies, Tapioca, sugar cane, red gram, vegetables, turmeric, sun flower,
	<i>Rabi</i>	Paddy, minor millets, sorghum, horse gram, Green gram, black gram, sugar cane, ragi, red gram, chillies, cotton.
Crops suggested	<i>kharif</i>	Double cropping Rice – Rice Rice – Pulse Millets (Maize) – Rice Cumbu/ Ragi/Maize/Sunflower - Rice Cotton Rice- Groundnut Flowers / Sugarcane / Banana Casuarina Groundnut - Rice
	<i>Rabi</i>	Paddy, horse gram, sugar cane, chillies, cotton.
5.5 Inland plains		
Blocks covered	Mailam, Marakanam, Olakkur, Vanur	
Growing season	3 rd week of July to 3 rd week of Feb	
LGP(days)	180-210	
Rainfall (mm)	865	
Soil Type	Deep to very deep clay to gravel mixed red clay soil	
Crops grown	<i>kharif</i>	Paddy, Groundnut, Sugarcane, Cholan, Cumbu, Redgram, Tapioca, Greengram, Blackgram, Coriander, Banana, Maize, Varagu, Groundnut, Cashewnut and Coconut.
	<i>Rabi</i>	Cumbu, Redgram, Greengram, Blackgram, Coriander, Maize, Cotton, Gingelly
Crops suggested	<i>kharif</i>	Paddy, Groundnut, Sugarcane, Cholan, Cumbu, Redgram, Tapioca, Greengram, Blackgram, Coriander, Banana, Maize, Varagu, Groundnut,
	<i>Rabi</i>	Coriander, Maize, Cotton, Gingelly

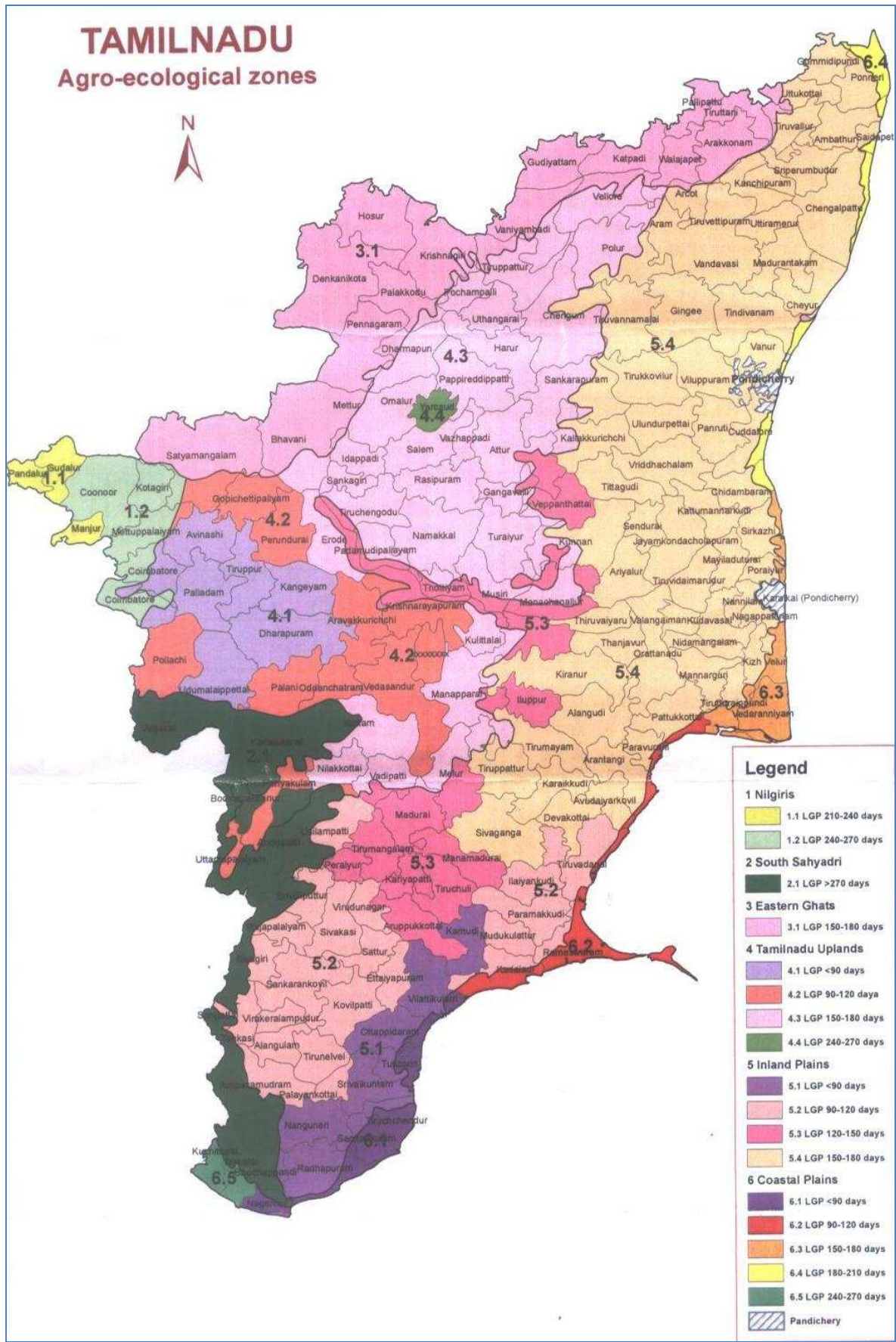
VELLORE

3.1 Eastern Ghats		
Blocks covered	part of Anaicut, Arakkonam, part of Arcot, Gudiyatham, part of Jolarpet, K V kuppam, Katpadi, Kaveripakkam, part of Madhanur, Natrampalli, Nemili, Pernambut, Sholinghur, Vellore, Walajah	

Growing season	2 nd week of July to 4 th week of Dec	
LGP(days)	150-180	
Rainfall (mm)	547	
Soil Type	Medium deep to deep gravely mixed alluvial and clay soil	
Crops grown	<i>kharif</i>	Sorghum, major millets and minor millets, turmeric, paddy, sugarcane, banana, vegetables, red gram, Bengal gram, horse gram, cow pea, sunflower, cotton
	<i>Rabi</i>	Maize, sorghum, minor millets, paddy, sugar cane and vegetables, Tapioca, Fruit crops
Crops suggested	<i>kharif</i>	Turmeric / Sugarcane / banana – with supplemental irrigation Rice – Rice Pulse – Rice Millets – Rice Cotton
	<i>Rabi</i>	sugar cane and vegetables, Cotton
4.3 Tamil Nadu uplands		
Blocks covered	Alangayam, part of Anaicut, part of Jolarpet, Kandhili, Kaniyambadi, part of Madhanur, Thirupathur	
Growing season	2 nd week of July to 4 th week of Dec	
LGP(days)	150-180	
Rainfall (mm)	686	
Soil Type	Medium deep to clay soil and gravely mixed red clay soil	
Crops grown	<i>kharif</i>	Cotton, minor millets, paddy, pulses, sorghum, maize, sun flower, onion, sugar cane, turmeric, chillies, tapioca, vegetables.
	<i>Rabi</i>	Rice, , Sunflower, Cotton, black gram, vegetables
Crops suggested	<i>kharif</i>	Double cropping is possible Rice – Rice Millets – Rice Rice – Pulse Sunflower – Maize Cotton Banana / Sugarcane / Flowers
	<i>Rabi</i>	Sunflower, vegetables
5.4 Inland plains		
Blocks covered	part of Arcot, Thimiri	
Growing season	3 rd week of July to 3 rd week of Feb	
LGP(days)	150-180	
Rainfall (mm)	770	
Soil Type	Deep to very deep clay to gravely mixed clay soil	
Crops grown	<i>kharif</i>	Rice, Sorghum, major and minor millets, Pulses, Cotton, Ground nut, Sesame, Chillies, Tapioca, sugar cane, red gram, vegetables, turmeric, sun flower,
	<i>Rabi</i>	Paddy, minor millets, sorghum, horse gram, Green gram, black gram, sugar cane, ragi, red gram, chillies, cotton.
Crops suggested	<i>kharif</i>	Double cropping Rice – Rice Rice – Pulse Millets (Maize) – Rice Cumbu/ Ragi/Maize/Sunflower - Rice Cotton Rice- Groundnut Flowers / Sugarcane / Banana Casuarina Groundnut - Rice
	<i>Rabi</i>	Paddy, horse gram, sugar cane, chillies, cotton.

TAMILNADU

Agro-ecological zones



Legend	
1 Nilgiris	
1.1 LGP 210-240 days	[Light yellow box]
1.2 LGP 240-270 days	[Light green box]
2 South Sahyadri	
2.1 LGP >270 days	[Dark green box]
3 Eastern Ghats	
3.1 LGP 150-180 days	[Light pink box]
4 Tamilnadu Uplands	
4.1 LGP <90 days	[Light purple box]
4.2 LGP 90-120 days	[Red box]
4.3 LGP 150-180 days	[Light pink box]
4.4 LGP 240-270 days	[Dark green box]
5 Inland Plains	
5.1 LGP <90 days	[Dark purple box]
5.2 LGP 90-120 days	[Red box]
5.3 LGP 120-150 days	[Pink box]
5.4 LGP 150-180 days	[Light orange box]
6 Coastal Plains	
6.1 LGP <90 days	[Dark purple box]
6.2 LGP 90-120 days	[Red box]
6.3 LGP 150-180 days	[Orange box]
6.4 LGP 180-210 days	[Yellow box]
6.5 LGP 240-270 days	[Green box]
Pondicherry	[Hatched box]

Acknowledgement

Contributions of Scientists of

**Department of Agronomy,
Agroclimate Research Centre,
Tamil Nadu Agricultural University
and
National Bureau of Soil Survey and Land Use Planning, Bangalore**

are sincerely acknowledged

Website: <http://sites.tnau.ac.in/rsgis/>