



तमिलनाडु के लिए राज्य स्तरीय समग्र कृषि-मौसम परामर्श बुलेटिन



State Composite Agro-meteorological Advisory Bulletin for Tamil Nadu and Puducherry Bulletin No. 006/2025

For the period 0830 IST, 21st January 2025 to
0830 IST, 26th January 2025

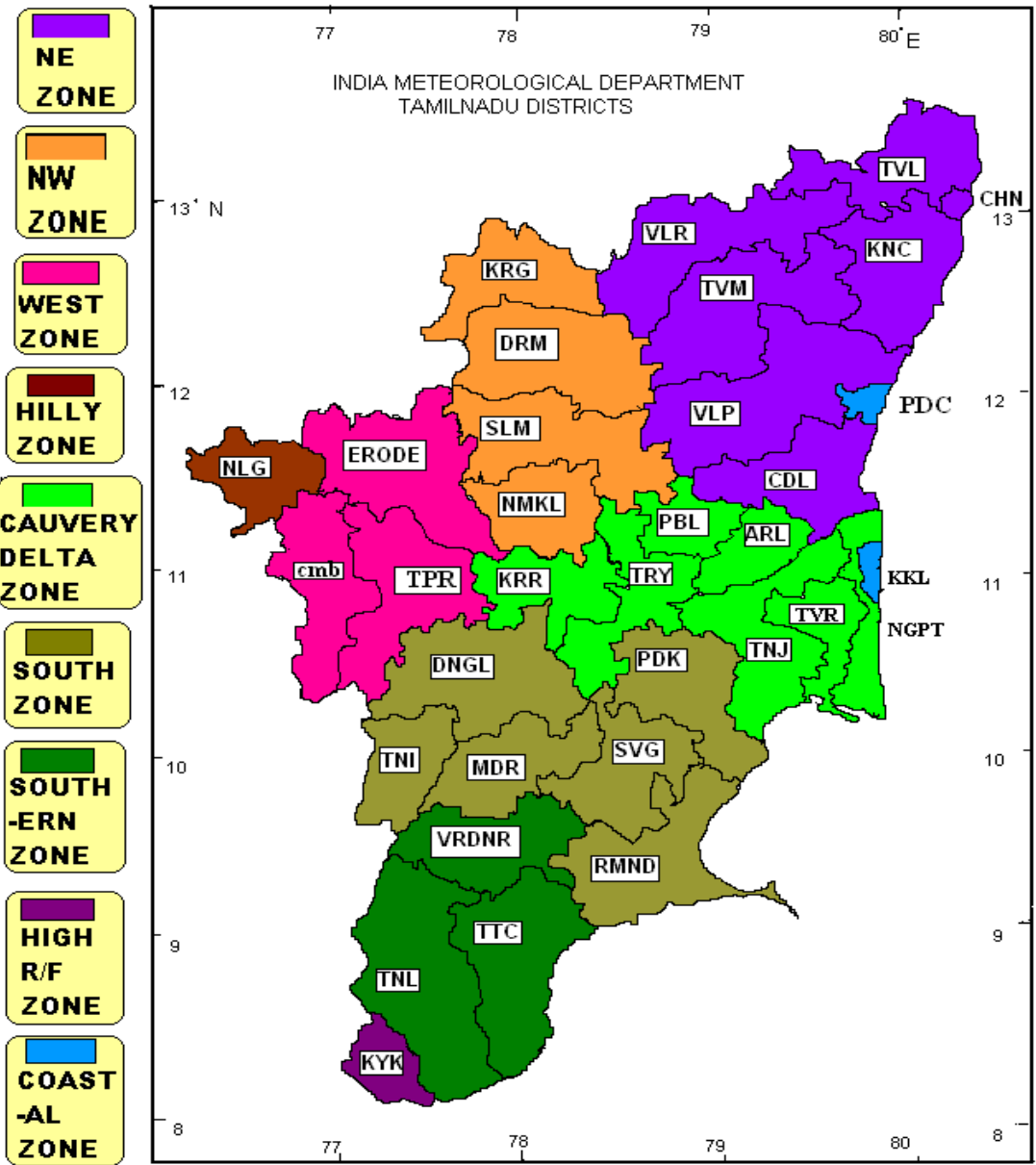
Issued on Tuesday, 21st January 2025

Issued by

DDGM, Regional Meteorological Centre, India Meteorological Department,
Chennai in collaboration with TNAU and nine AMFU's of Agro climatic Zones of
the Tamil Nadu state

Agro climatic zones of the state

Sl. No	Agro climatic zone	Districts	Agro met field Unit (AMFU) location
1	Northeastern zone	Kanchipuram, Tiruvallur, Cuddalore Tiruvannamalai, Chennai, Villupuram , Vellore	Chennai
2	Northwestern zone	Dharmapuri, Krishnagiri, Salem and Namakkal	Namakkal
3	Western Zone	Erode, Tiruppur and Coimbatore,	Coimbatore,
4	Cauvery Delta zone	Thanjavur, Nagapattinam, Tiruvarur, Karur, Perambalur, Ariyalur and Tiruchirapalli.	Adudurai
5	Southern zone	Virudhunagar, Tirunelveli and Thoothukudi	Kovilpatti
6	South Zone	Pudukkottai, Madurai, Dindigul, Theni, Ramanathapuram and Sivagangai	Kannivadi
7	High rainfall zone	Kanyakumari	Pechiparai
8	Hilly zone	Nilgiris	Ooty
9	Coastal Zone	Karaikal and Pondicherry	Karaikal



Past Weather Summary for the period 17.01.25 to 20.01.25 for the State of Tamilnadu & Puducherry

Temperature:

Maximum Temperature of range 26°C – 32°C prevailed over the state. Kodaikanal and Uthagamandalam recorded Maximum temperature range 13°C – 23°C during the period.

Minimum temperature of range 19°C - 25°C prevailed over the State. Kodaikanal and Uthagamandalam recorded Minimum temperature of range 08°C – 13°C during the same period.

Spatial distribution of Rainfall

Spatial distribution of Rainfall	Tamil Nadu	Puducherry
Widespread (Most places)	-	-
Fairly widespread (Many places)	19.01.2025 and 20.01.2025	-
Scattered (Few Places)	-	19.01.2025 and 20.01.2025
Isolated (One or Two Places)	17.01.2025 and 18.01.2025	-
Dry	-	17.01.2025 and 18.01.2025

Chief Amounts of Rainfall (in cms):-

17.01.25: Oothu (dist Tirunelveli), Nalumukku (dist Tirunelveli) 7 each, Kakkachi (dist Tirunelveli) 5, Manjolai (dist Tirunelveli) 4.

18.01.25: Oothu (dist Tirunelveli) 1.

19.01.25: Oothu (dist Tirunelveli) 15; Nalumukku (dist Tirunelveli) 14; Kakkachi (dist Tirunelveli), Tarangambadi (dist Mayiladuthurai) 12 each; Sembanarkoil PWD (dist Mayiladuthurai), Manjolai (dist Tirunelveli), Mayiladuthurai (dist Mayiladuthurai) 11 each; Mayiladuthurai AWS (dist Mayiladuthurai) 10 each; Tirupoondi (dist Nagapattinam) 8 each; Thalaigayyer (dist Nagapattinam), Ponneri (dist Tiruvallur) 7 each; Zone 03 Puzhal (dist Chennai), Velankanni (dist Nagapattinam), Karaikal (dist Karaikal) 6 each; Karaikal AWS (dist Karaikal), Taramani ARG (dist Chennai), Sirkali (dist Mayiladuthurai), Manjalaru (dist Thanjavur), Red Hills (dist Tiruvallur), Oddanchatram (dist Dindigul), Zone 01 Thiruvottiyur (dist Chennai), Puzhal ARG (dist

Tiruvallur), Thirukuvalai (dist Nagapattinam), Alandur (dist Chennai), Chennai (AP) (dist Chennai), Zone 12 Meenambakkam (dist Chennai), Zone 18 Aminjikarai (dist Chennai), Poonamalle ARG (dist Tiruvallur), Chennai(N) AWS (dist Chennai), Kancheepuram (dist Kancheepuram) 5 each; Zone 14 Madipakkam (dist Chennai), Zone 06 Perambur (dist Chennai), Kumbakonam (dist Thanjavur), Gummidipoondi (dist Tiruvallur), Zone 02 D15 Manali (dist Chennai), Thiruvudaimaruthur (dist Thanjavur), Tiruttani PTO (dist Tiruvallur), Zone 12 Alandhur (dist Chennai), Palani ARG (dist Dindigul), Zone 03 Madhavaram (dist Chennai), Thiruthuraipoondi (dist Thiruvarur), ACS Medical College ARG (dist Kancheepuram), Chennai(N) AWS (dist Chennai), Jaya Engg College AWS (dist Tiruvallur), Karuppanadhi Dam (dist Tenkasi), Chennai (N) (dist Chennai), Tiruttani AWS (dist Tiruvallur) 4 each; Nannilam (dist Thiruvarur), Cholavaram (dist Tiruvallur), Kodaikanal (dist Dindigul), Kodayakarai (dist Nagapattinam), Budalur (dist Thanjavur), Zone 13 Adyar (dist Chennai), Thirumanur (dist Ariyalur), Vedaranyam (dist Nagapattinam), Zone 11 Maduravoyal (dist Chennai), Ennore AWS (dist Tiruvallur), Tiruvaiyaru (dist Thanjavur), Palani (dist Dindigul), Suthamalli Dam (dist Ariyalur), Ayikudi (dist Tenkasi), Valangaiman (dist Thiruvarur), Poonamallee (dist Tiruvallur), Pullambadi (dist Thiruchirappalli), Sholinganallur (dist Chennai), Zone 08 Anna Nagar West (dist Chennai), Kundrathur (dist Kancheepuram), Zone 13 Raja Annamalaipuram (dist Chennai), Zone 06 Kolathur (dist Chennai), Zone 07 Ayapakkam (dist Chennai), Zone 15 Uthandi (dist Chennai), Sriperumbudur (dist Kancheepuram), Ayanavaram Taluk Office (dist Chennai), MGR Nagar (dist Chennai), Chembarabakkam_REV (dist Tiruvallur), Lower Anaicut (dist Thanjavur), Zone 10 Vadapalani (dist Chennai), Tirukattupalli (dist Thanjavur), Zone 04 Tondiarpet (dist Chennai), Zone 09 Ice House (dist Chennai), Anna University ARG (dist Chennai), Satyabama Uty ARG (dist Chengalpattu), Mannargudi (dist Thiruvarur) 3 each; Zone 11 Valasaravakkam (dist Chennai), Thanjavur (dist Thanjavur), Amaravathy Dam (dist Tiruppur), Zone 05 Chennai central (dist Chennai), Pamban (dist Ramanathapuram), Good Will School Villivakkam ARG (dist Tiruvallur), Zone 05 Basin bridge (dist Chennai), Manalmedu (dist Mayiladuthurai), Thanjai Papanasam (dist Thanjavur), LMOIS Kolapakkam ARG (dist Chengalpattu), YMCA Nandnam ARG (dist Chennai), Anna University (dist Chennai), Tenkasi AWS (dist Tenkasi), Zone 02 Manali New Town (dist Chennai), DGP Office (dist Chennai), Grand Anaicut (dist Thanjavur), Zone 09 Nungambakkam (dist Chennai), Kadambur (dist Thoothukudi), Zone 07 Ambattur (dist Chennai), Vellore (dist Vellore), Zone 13 Velachery (dist Chennai), Kovilpatti (dist Thoothukudi), Vembakkam (dist Tiruvannamalai), Kodaikannal Boat Club (dist Dindigul), Zone 15 Sholinganallur (dist Chennai), Needamangalam (dist Thiruvarur), Adiramapattinam (dist Thanjavur), Kodavasal (dist Thiruvarur), Zone 01 Kathivakkam

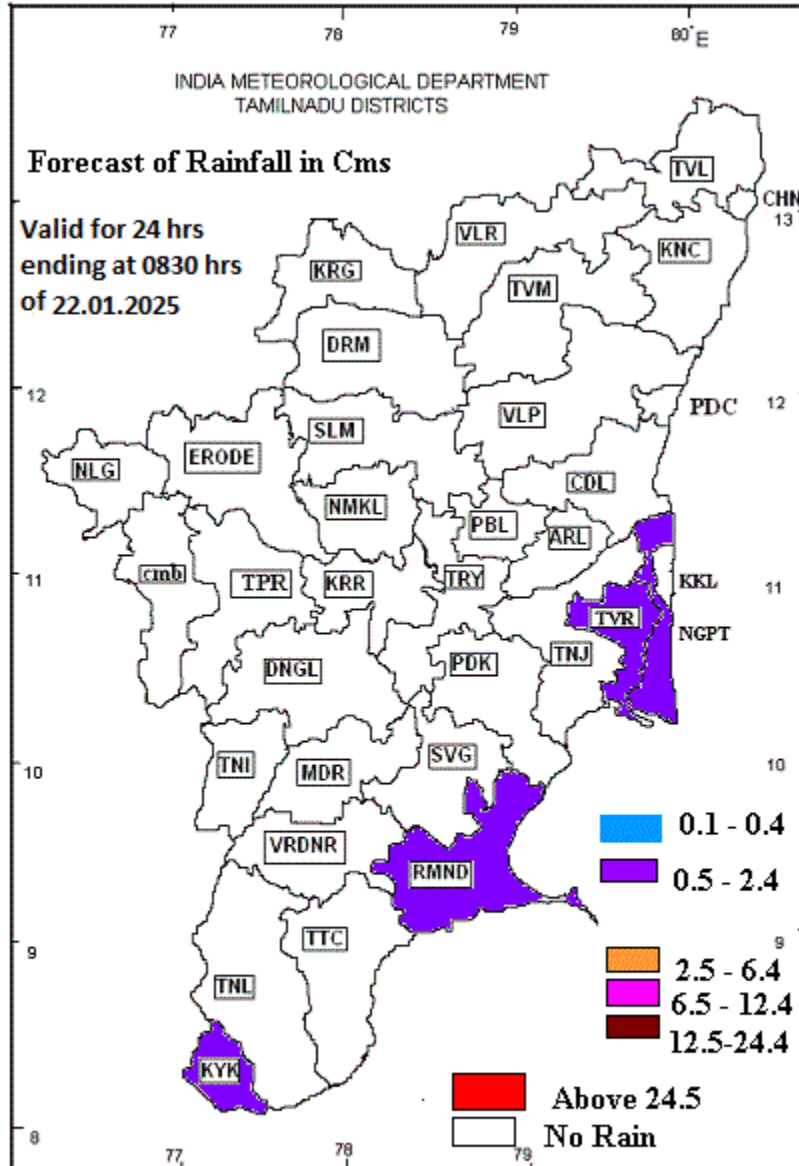
(dist Chennai), Cheyyar ARG (dist Tiruvannamalai), Ayyampettai (dist Thanjavur), Madukkur (dist Thanjavur), Thamaraipakkam (dist Tiruvallur), Orthanad (dist Thanjavur), Thanjavur PTO (dist Thanjavur), Servalar Dam (dist Tirunelveli), Uthiramerur (dist Kancheepuram), Samayapuram (dist Thiruchirappalli), Kayathar (dist Thoothukudi), Muthupet (dist Thiruvarur), Ambattur MW (dist Chennai), Sankarankoil (dist Tenkasi), Thangachimadam (dist Ramanathapuram), Zone 12 D156 Mugalivakkam (dist Chennai), Papanasam (dist Tirunelveli), Ottapadiram (dist Thoothukudi), Kalugumalai (dist Thoothukudi) 2 each; Kuruvadi (dist Ariyalur), Thuvakudi AWS (dist Thiruchirappalli), Nandhiyar Head (dist Thiruchirappalli), Tiruvallur (dist Tiruvallur), Avadi (dist Tiruvallur), Kovilpatti AWS (dist Thoothukudi), Nagapattinam (dist Nagapattinam), Tiruvarur (dist Thiruvarur), Thuvakudi IMTI (dist Thiruchirappalli), Tondairpet (dist Chennai), Alangudi (dist Pudukkottai), Rameswaram (dist Ramanathapuram), Royapuram (dist Chennai), Tondi (dist Ramanathapuram), Kalavai PWD (dist Ranipet), Panapakkam (dist Ranipet), Jayamkondam (dist Ariyalur), Virinjipuram AWS (dist Vellore), Cheyyar (dist Tiruvannamalai), Theerthandathanam (dist Ramanathapuram), Tiruchirappalli Junction (dist Thiruchirappalli), Lalgudi (dist Thiruchirappalli), Mandapam (dist Ramanathapuram), Tiruchirappalli Airport (dist Thiruchirappalli), VIT_Chennai AWS (dist Chengalpattu), Vedharanyam AWS (dist Nagapattinam), Kadaladi (dist Ramanathapuram), Vattanam (dist Ramanathapuram), Mimisal (dist Pudukkottai), Palayamkottai (dist Tirunelveli), Vamban KVK AWS (dist Pudukkottai), Mahabalipuram (dist Chengalpattu), Minnal (dist Ranipet), Tuticorin Rly Station ARG (dist Thoothukudi), Ettayapuram (dist Thoothukudi), Ariyalur PTO (dist Ariyalur), Tirunelveli AWS (dist Tirunelveli), Ariyalur Taluk Office (dist Ariyalur), Dindigul (dist Dindigul), Kudimiyanmalai (dist Pudukkottai), Vilathikulam (dist Thoothukudi), Navalur Kottapattu (dist Thiruchirappalli), Ammundi (dist Vellore), Chengam (dist Tiruvannamalai), Neivasal Thenpathi (dist Thanjavur), Arakonam (dist Ranipet), Sirukudi (dist Thiruchirappalli), Kollidam (dist Mayiladuthurai), Vandavasi (dist Tiruvannamalai), Peravurani (dist Thanjavur), Thuraiyur (dist Thiruchirappalli), Uthukottai (dist Tiruvallur), Arcot (dist Ranipet), Sivakasi (dist Virudhunagar), Tiruvadana (dist Ramanathapuram), Vettikadu (dist Thanjavur), Tambaram (dist Chengalpattu), Kinnakorai (dist The Nilgiris), Mahabalipuram AWS (dist Chengalpattu), Kodambakkam (dist Chennai), Manimutharu (dist Tirunelveli), Wallajah (dist Ranipet), Chettikulam (dist Perambalur), Kamatchipuram (dist Dindigul), Devimangalam (dist Thiruchirappalli), Vedasandur (dist Dindigul), Tobacco Station (VDR) (dist Dindigul), CD Hospital Tondiarpet (dist Chennai), Tirumayam (dist Pudukkottai), Vallam (dist Thanjavur), Padalur (dist Perambalur), Vedasandur AWS

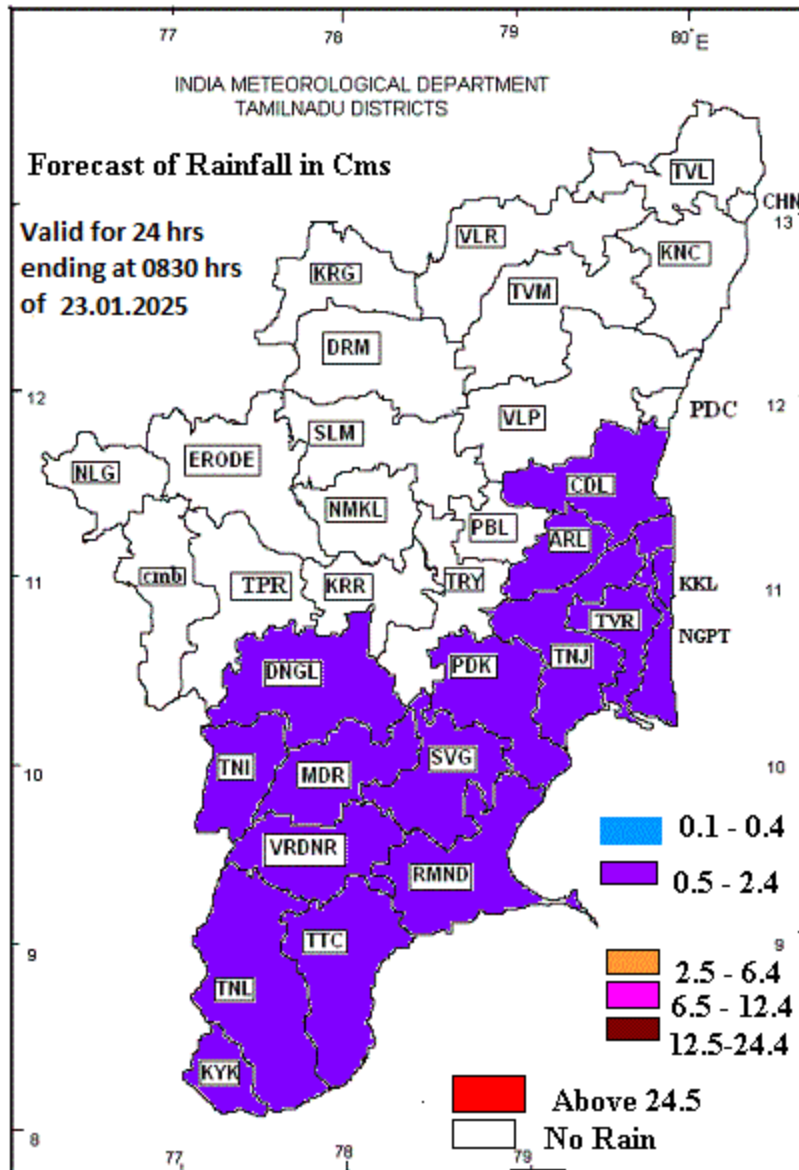
(dist Dindigul), Walajabad (dist Kancheepuram), Perambalur (dist Perambalur), Chidambaram AWS (dist Cuddalore), Illuppur (dist Pudukkottai), Arani (dist Tiruvannamalai), Thirumoorthi Dam (dist Tiruppur), Thirumoorthy IB (dist Tiruppur), Manjalar (dist Theni), Chennai Collector Office (dist Chennai), Azhiyar (dist Coimbatore), Chengalpattu (dist Chengalpattu), Ponnmalai (dist Thiruchirappalli) 1 each.

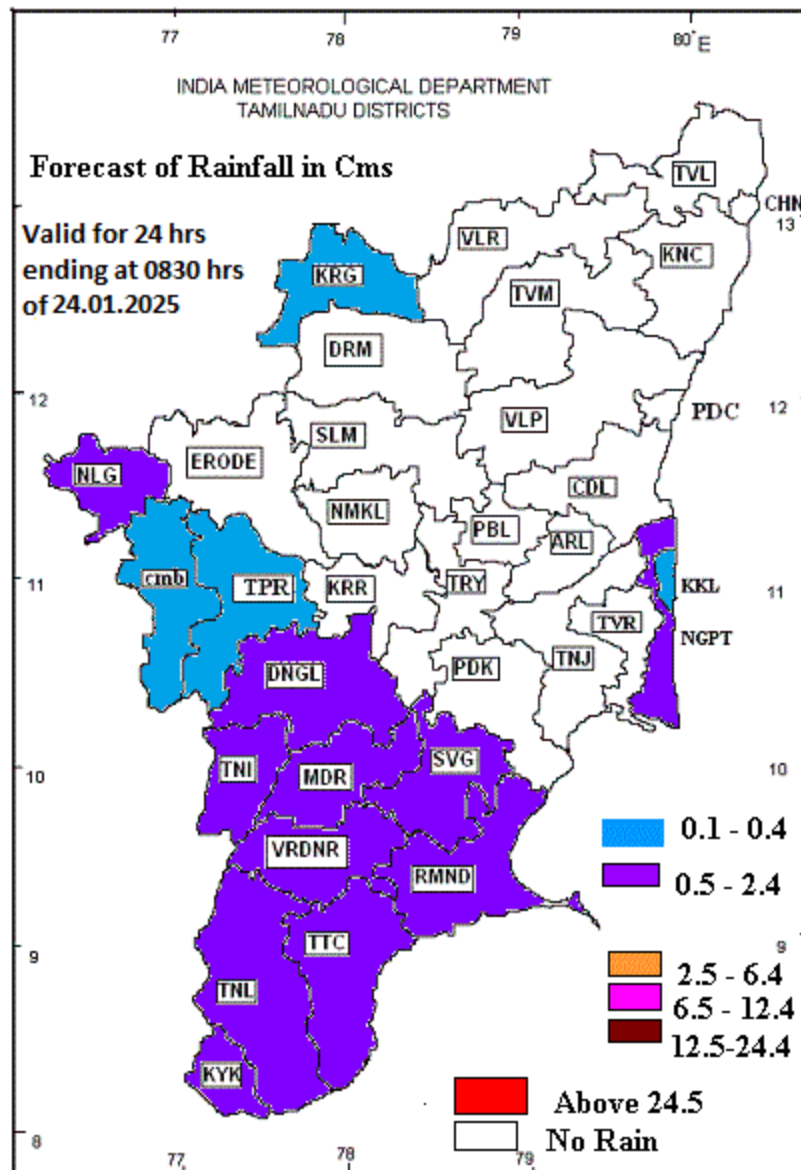
20.01.25: Oothu (dist Tirunelveli) 23, Nalumukku (dist Tirunelveli) 22, Kakkachi (dist Tirunelveli) 21, Manjolai (dist Tirunelveli) 16, Thangachimadam (dist Ramanathapuram) 11, Rameswaram (dist Ramanathapuram) 10, Mandapam (dist Ramanathapuram) 9, Pamban (dist Ramanathapuram) 8, Valinokam (dist Ramanathapuram), Poondi (dist Tiruvallur) 6 each, Surangudi (dist Thoothukudi), Tiruttani (dist Tiruvallur), R.K.Pet (dist Tiruvallur), Thamaraipakkam (dist Tiruvallur), Arani (dist Tiruvannamalai) 4 each, Servalar Dam (dist Tirunelveli), Modakkurichi (dist Erode), Kaveripakkam (dist Ranipet), Sholingur (dist Ranipet), Tiruvallur (dist Tiruvallur), Pallipattu (dist Tiruvallur), Ambur (dist Tirupathur), Veppanthattai (dist Perambalur), Kalugumalai (dist Thoothukudi), Papanasam (dist Tirunelveli), Pilavakkal_Periyar Dam (dist Virudhunagar), Rasipuram (dist Namakkal), Dindigul (dist Dindigul), Kadaladi (dist Ramanathapuram), Vadapudupattu (dist Tirupathur), Tiruttani AWS (dist Tiruvallur) 3 each, Sothuparai (dist Theni), Watrap (dist Virudhunagar), Arakonam (dist Ranipet), Ponnai Dam (dist Vellore), Wallajah (dist Ranipet), Vedanatham (dist Thoothukudi), Tobacco Station (VDR) (dist Dindigul), Vedasandur (dist Dindigul), Panapakkam (dist Ranipet), Oddanchatram (dist Dindigul), Gadana Dam (dist Tenkasi), Vaippar (dist Thoothukudi), Tiruttani PTO (dist Tiruvallur), Uppar Dam (dist Tiruppur), Sivagiri (dist Tenkasi), Periyakulam (dist Theni), Vedasandur AWS (dist Dindigul), Arcot (dist Ranipet), Ramanadhi Dam Section (dist Tenkasi), Mohanur (dist Namakkal), Vembakkam (dist Tiruvannamalai), Uthiramerur (dist Kancheepuram), Katpadi (dist Vellore), Tiruppur North (dist Tiruppur), Kangeyam (dist Tiruppur), Thekkadi (dist Theni), Mayiladuthurai AWS (dist Mayiladuthurai), Sembanarkoil PWD (dist Mayiladuthurai), Mulanur (dist Tiruppur), RSCL-2 Kedar (dist Villupuram), Madukkarai Taluk Office (dist Coimbatore), Thenparanadu (dist Thiruchirappalli), Ammundi (dist Vellore), Amaravathy Dam (dist Tiruppur), Koppampatti (dist Thiruchirappalli), Shanmuganadhi (dist Theni) 2 each, Podanur Railway Station (dist Coimbatore), Kannadaian Anicut (dist Tirunelveli), Thirumoorthi Dam (dist Tiruppur), Tuticorin Rly Station ARG (dist Thoothukudi), Pandavaiyar Head (dist Thiruvarur), Sankarankoil (dist Tenkasi), Karuppanadhi Dam (dist Tenkasi), Thirumoorthy IB (dist Tiruppur), Palani (dist Dindigul), Tiruppur_PWD (dist Tiruppur), Manimutharu (dist Tirunelveli), Bhavani (dist Erode), Karur (dist

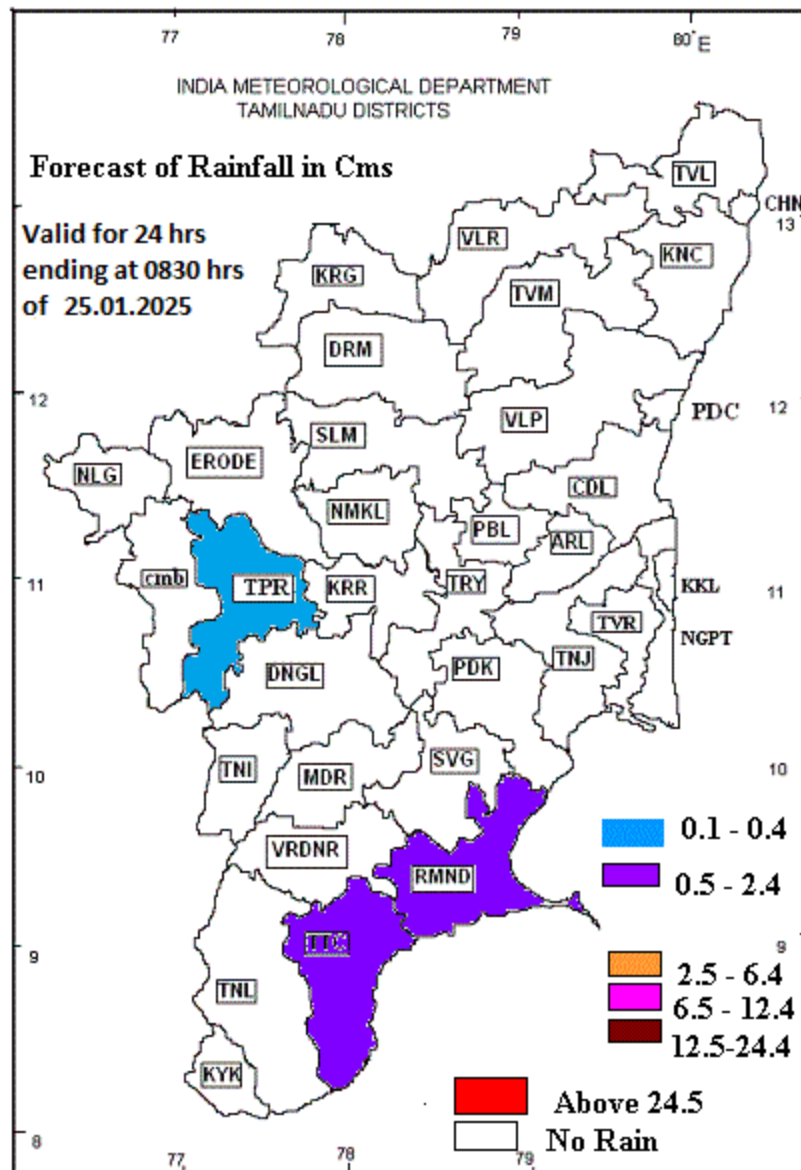
Karur), Kodaikanal (dist Dindigul), Gobichettipalayam (dist Erode), Periyar (dist Theni), Melalathur (dist Vellore), Madathukulam (dist Tiruppur), Kovilpatti (dist Thoothukudi), Walajabad (dist Kancheepuram), Ramnadu KVK AWS (dist Ramanathapuram), Mayanoor (dist Karur), Kinnakorai (dist The Nilgiris), Thirukoilur ARG (dist Kallakurichi), Chettikulam (dist Perambalur), Ranipet (dist Ranipet), Manjalaru (dist Thanjavur), Vellore (dist Vellore), Red Hills (dist Tiruvallur), Ramanathapuram (dist Ramanathapuram), Thaluthalai (dist Perambalur), Aduthurai AWS (dist Thanjavur), Maniyachi (dist Thoothukudi), Kavundapadi (dist Erode), Rajapalayam (dist Virudhunagar), Mayiladuthurai (dist Mayiladuthurai), Ayanavaram Taluk Office (dist Chennai), Ayikudi (dist Tenkasi), Poonamallee (dist Tiruvallur), Kurungulam (dist Thanjavur), Chennimalai (dist Erode), Thirukuvalai (dist Nagapattinam), Aravakurichi (dist Karur), Kalavai PWD (dist Ranipet), Nagapattinam (dist Nagapattinam), Labbaikudikadu (dist Perambalur), Tiruchengode (dist Namakkal), Ambasamudram (dist Tirunelveli), Thenkasi (dist Tenkasi), Vettikadu (dist Thanjavur), Sivakasi (dist Virudhunagar), Tenkasi AWS (dist Tenkasi), Perambalur AWS (dist Perambalur), Parangipettai (dist Cuddalore), Eraiyur (dist Perambalur), Agaram Seegoor (dist Perambalur), Echanviduthi (dist Thanjavur), Tarangambadi (dist Mayiladuthurai), Nallathangal Reservoir (dist Tiruppur), Sankaridurg (dist Salem), Aranmanaipudur (dist Theni), Vembakottai (dist Virudhunagar), Thiruvidadimaruthur (dist Thanjavur), Bodinaickanur (dist Theni), Kovilpatti AWS (dist Thoothukudi), Krishnarayapuram (dist Karur), Virinjipuram AWS (dist Vellore), Andipatti (dist Theni), Natrampalli (dist Tirupathur), Kamatchipuram (dist Dindigul), Kancheepuram (dist Kancheepuram), Dharapuram (dist Tiruppur), Thiruvalangadu (dist Tiruvallur), Kodaikannal Boat Club (dist Dindigul), K.Paramathi (dist Karur), Palani ARG (dist Dindigul), Sendamangalam (dist Namakkal), Vallam (dist Thanjavur), Ottapadiram (dist Thoothukudi), Kumbakonam (dist Thanjavur), Thoothukudi (dist Thoothukudi) Kulasekarapattinam (dist Thoothukudi), Elumalai (dist Madurai), Mangalapuram (dist Namakkal), Orthanad (dist Thanjavur), Coonoor AWS (dist The Nilgiris), Veerapandi (dist Theni), Coonoor PTO (dist The Nilgiris), Geddai (dist The Nilgiris), Udumalpet (dist Tiruppur), Kothavacherry (dist Cuddalore), Valangaiman (dist Thiruvarur), Kunda Bridge (dist The Nilgiris), TCS Mill Kethandapatti (dist Tirupathur), Sattur (dist Virudhunagar), Usilampatti (dist Madurai), Gudiyatham (dist Vellore) 1 each.

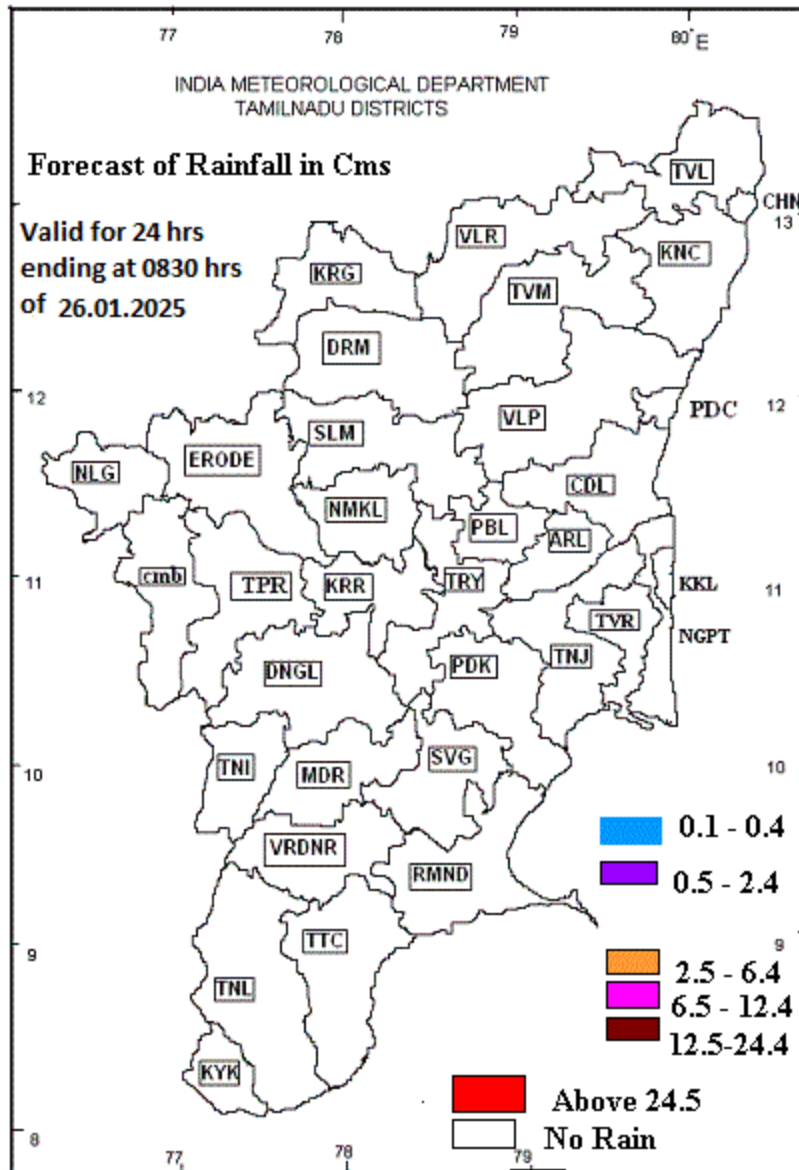
**DISTRICT LEVEL ENSEMBLE WEATHER FORECAST ISSUED ON: 21.01.25
VALID FOR THE NEXT 5 DAYS**











District-wise Agromet Advisories

Chennai, Kancheepuram, Villupuram, Tiruvannamalai, Tiruvallur, Vellore and Cuddalore

SMS Advisory:

(22.01.2025-26.01.2025) Mist/ Haze conditions are very likely to prevail at isolated pockets of Tamil Nadu during morning hours.

Livestock Advisory:

1. Livestock must be give medicated bath to avoid ectoparasite infestation. Moreover dipping must be done on a sunny day.
2. The surplus fodder available must be preserved as silage for summer feeding.
3. The livestock must be provided in clean wholesome drinking water
4. To prevent water stagnation proper drainage must be provided in livestock shelter.
5. Scabies affected rabbits must be isolated and treated. The cage must be disinfected with flame gun.
6. Newly born piglets must be protected from cold drafts
7. To prevent the methane and ammonia accumulation in pig sty provision of proper ventilation is necessary.
8. The chicks must be given artificial heat (1 watt / chick or coal brooder for every 200 chicks for first 2 weeks of age).
9. Add 5% shell grit in laying hens for optimum egg production.

Agricultural advisory Rice:

Due to prevailing weather conditions leaf folder and stem borer infestation found in paddy crop. To manage them, spray carbosulfan 400 ml/ac or cartap hydrochloride 600 g/ac during morning or evening hours.

Due to prevailing weather conditions favorable, blast infection is found in paddy crop. To manage the blast, spray tricyclazole 75% WP 200 g/acre or carbendazim 50WP @ 200g/acre (or) azoxystrobin 25 SC @ 200 ml/acre at morning or evening time.

The forecasted weather may cause stem borer and leaf folder infestation in rice crop. The farmers are advised to monitor the field, if symptoms are observed it's advised to spray Chlorantraniliprole 18.5% 150 ml/ha.

Groundnut:

Drain out excess water in groundnut field and resowing of same variety in cyclone affected fields.

In groundnut there are possibilities of stemrot infestation. For management farmers are advised to application of *Trichoderma viride* @2.5 kg/ha, mixed with 50 kg FYM.

Cotton:

Due to prevailing weather conditions, there are chances of cotton root rot infection. To control spot drench with carbendazim 1.0 g/l.

Cashew:

To control tea mosquito bug first spraying with thiamethoxam 25% WG (100 g/ha) at flushing stage, second spraying with chlorpyrifos 2.0 ml/lit at flowering and third spraying with profenophos 1.0 ml/lit at fruit set stage.

Banana:

Prevailing weather condition is favorable for sigatoka leaf spot infection in banana. To control spray carbendazim 1.0 g/l or propiconazole 1.0 ml/l or mancozeb 2.5 g/l and sticking agent 1.0 ml/l at 10-15 day intervals.

Prevailing weather condition is favorable for panama wilt and nematode infection in banana. To control apply *Bacillus subtilis* 1.0 kg/ha + *Paecilomyces lilacinus* 1.0 kg/ha at 2, 4 and 6th months of planting.

Coimbatore

Agro Advisory

Crop	Stage	Advisory
General		Light Dazzling is expected on 24.01.2025 and the wind speed is expected to be around up to 10-12 kmph in Western zone districts.
Rice	Nursery, Flowering & Harvest	Considering the low temperature, spray Zinc Sulphate @ 0.5% + Urea1% to improve the growth of nursery seedlings of Navarai season. Considering the diurnal variation, Ear head bug may appear in samba rice. Spray Dinotefuran 15% + Pymetrozine 45% WG @ 333 gram in 500litre water for one hectare during the morning hours. Navarai season rice planting may be initiated with wet and dry method of irrigation.
Sugarcane		Considering the favourable weather, planting of early season sugarcane may be completed.
Turmeric		Prevailing weather condition is also favorable for the blotch incidence in turmeric. Hence farmers are advised to monitor the crop and spray mancozeb @ 2 g/liter of water.
Curry leaf		The low (20°C) minimum temperature may affect the leaf aroma of curry leaf. Hence, irrigate during the evening hours or through sprinkler irrigation to modify micro climate.
Banana		Prevailing weather conditions is favourable for sigatoka leaf spot in banana especially under wet condition where soil moisture is high. Therefore, dry the field and remove the affected leaves & burn it. Spray Pyraclostrobin 20% WG @ 750 gram / ha . Always add 5 ml of wetting agent per 10 lit of spray fluid.
Mango		Due to high relative humidity and low minimum temperature, sooty mould diseases may occur in mango due to hopper incidence and spray Imidacloprid 17.8% SC @ 0.3ml/lit
Animal Husbandry		Provide adequate clean drinking water to avoid thirstiness in animals during cool winter. Sodium hydroxide may be used as disinfectant (200 gm in 10 liter of water) for foot and mouth disease in cattle's shed and the wounds of the infected animal may be treated with neem oil with turmeric powder. Night temperature is expected below 20°C, poultry and animals sheds should be protected from chilling by hanging Jute bags in the side walls of the sheds.

SMS advisory:

Considering the favourable weather, spray Azoxystrobin 23% SC @ 500ml/ha to control powdery mildew diseases in vegetable.

Erode

Agro Advisory

Crop	Stage	Advisory
General		Light Dazzling is expected on 23.01.2025 and the wind speed is expected to be around up to 10-12 kmph in Western zone districts.
Rice	Nursery, Flowering & Harvest	Considering the low temperature, spray Zinc Sulphate @ 0.5% + Urea1% to improve the growth of nursery seedlings of Navarai season. Considering the diurnal variation, Ear head bug may appear in samba rice. Spray Dinotefuran 15% + Pymetrozine 45% WG @ 333 gram in 500litre water for one hectare during the morning hours. Navarai season rice planting may be initiated with wet and dry method of irrigation.
Sugarcane		Considering the favourable weather, planting of early season sugarcane may be completed.
Turmeric		Prevailing weather condition is also favorable for the blotch incidence in turmeric. Hence farmers are advised to monitor the crop and spray mancozeb @ 2 g/liter of water.
Curry leaf		The low (20°C) minimum temperature may affect the leaf aroma of curry leaf. Hence, irrigate during the evening hours or through sprinkler irrigation to modify micro climate.
Banana		Prevailing weather conditions is favourable for sigatoka leaf spot in banana especially under wet condition where soil moisture is high. Therefore, dry the field and remove the affected leaves & burn it. Spray Pyraclostrobin 20% WG @ 750 gram / ha . Always add 5 ml of wetting agent per 10 lit of spray fluid.
Mango		Due to high relative humidity and low minimum temperature, sooty mould diseases may occur in mango due to hopper incidence and spray Imidacloprid 17.8% SC @ 0.3ml/lit
Animal Husbandry		Provide adequate clean drinking water to avoid thirstiness in animals during cool winter. Sodium hydroxide may be used as disinfectant (200 gm in 10 liter of water) for foot and mouth disease in cattle's shed and the wounds of the infected animal may be treated with neem oil with turmeric powder. Night temperature is expected below 20°C, poultry and animals sheds should be protected from chilling by hanging Jute bags in the side walls of the sheds.

SMS advisory:

Considering the favourable weather, spray Azoxystrobin 23% SC @ 500ml/ha to control powdery mildew diseases in vegetable.

Tiruppur

Agro Advisory

Crop	Stage	Advisory
General		Light Dazzling is expected on 24.01.2025 and the wind speed is expected to be around up to 10-12 kmph in Western zone districts.
Rice	Nursery, Flowering & Harvest	Considering the low temperature, spray Zinc Sulphate @ 0.5% + Urea1% to improve the growth of nursery seedlings of Navarai season. Considering the diurnal variation, Ear head bug may appear in samba rice. Spray Dinotefuran 15% + Pymetrozine 45% WG @ 333 gram in 500litre water for one hectare during the morning hours. Navarai season rice planting may be initiated with wet and dry method of irrigation.
Sugarcane		Considering the favourable weather, planting of early season sugarcane may be completed.
Turmeric		Prevailing weather condition is also favorable for the blotch incidence in turmeric. Hence farmers are advised to monitor the crop and spray mancozeb @ 2 g/liter of water.
Curry leaf		The low (20°C) minimum temperature may affect the leaf aroma of curry leaf. Hence, irrigate during the evening hours or through sprinkler irrigation to modify micro climate.
Banana		Prevailing weather conditions is favourable for sigatoka leaf spot in banana especially under wet condition where soil moisture is high. Therefore, dry the field and remove the affected leaves & burn it. Spray Pyraclostrobin 20% WG @ 750 gram / ha . Always add 5 ml of wetting agent per 10 lit of spray fluid.
Mango		Due to high relative humidity and low minimum temperature, sooty mould diseases may occur in mango due to hopper incidence and spray Imidacloprid 17.8% SC @ 0.3ml/lit
Animal Husbandry		Provide adequate clean drinking water to avoid thirstiness in animals during cool winter. Sodium hydroxide may be used as disinfectant (200 gm in 10 liter of water) for foot and mouth disease in cattle's shed and the wounds of the infected animal may be treated with neem oil with turmeric powder. Night temperature is expected below 20°C, poultry and animals sheds should be protected from chilling by hanging Jute bags in the side walls of the sheds.

SMS advisory:

Considering the favourable weather, spray Azoxystrobin 23% SC @ 500ml/ha to control powdery mildew diseases in vegetable.

Ariyalur, Karur, Nagapattinam, Perambalur, Thanjavur, Tiruvarur and Tiruchirapalli

Agro advisory:

General		Postpone irrigation, fertilizer and pesticide application to all crops. Provide adequate drainage facility to cropped fields wherever essential.
Rice	Sowing & Harvest	For rice fallow pulse cultivation, sow black gram / green gram seeds after rice harvest.
		In samba paddy field, it is right time to sow the rice fallow pulses depending on rain. ADT 3, ADT 6 blackgram and ADT 3 green gram varieties are suitable under rice fallow condition.
		Harvested paddy seeds before rain may be dried at moisture less than 13% using the current dry weather condition to prevent stored pests damage.
Banana		Provide support with wooden poles to avoid lodging of tree due to rain and wind.
Cattle	Cow and Goat	This situation is favorable for the development of aflatoxin infection in the corn kernels and paddy straw, which may affect the health of the cattle. To save them from infection, dry the Corn kernels and paddy straw before feeding.

SMS advisory

For rice fallow pulse cultivation, sow black gram / green gram seeds after rice harvest.

Dindigul

SMS Advisory	Chances of Moderate rain on 23 & 24 Jan. Maximum temperature would be in the range of 30°C to 31°C and the minimum temperature would be between 21°C - 23°C. Generally cloudy sky will appear for the next five days. Wind is expected with the speed of 10-12 Km/h from, Northeast East & directions.
--------------	--

General Advisory:

Extended range Forecast for next week (24th to 30th January 2025):

Rainfall:

As per extended range predictions, there is possibility of generally normal to slightly above normal rainfall likely over the district during 24th to 30th January 2025

Maximum Temperature:

Maximum temperatures are likely to be near normal to slightly below normal and are likely to be in the range 26°C to 28°C over the plains of the district during next week. 24th to 30th January 2025.

Minimum Temperature:

Minimum temperatures are likely to be generally normal to slightly above normal and are likely to be in the range 16°C to 20°C over the district during next week 24th to 30th January 2025.

During the dates 22nd and 23rd, Mist is likely to prevail during the early morning hours, allow your cattle to graze only 2 hours after sunrise.

Mist / Haze is very likely to prevail during the night and early morning hours. Hence, cattle / goats, cows and calves, may allowed to graze after 08.00Am in the morning. Tie the jute bags around the shed .Since the dew, laden grass may be a carrier of intermediate host of flukes.

Weather Based Agro-Advisories: (Paddy, Bhendi & Animal Husbandry)

Paddy:

The incidence of Whorl maggot is expected in paddy. The symptoms show yellowish-white longitudinal marginal blotching with a hole.

Leaves shrivelled plant, stunted and drooping of young leaves near the tip.

Remove the alternate hosts from the field, and apply the optimum recommendation of potash fertilizer.

To control spray Buprofezin @ 350 ml/acre.

Spraying activities can be done during the non-rainy days.

Bhendi:

The incense of Red cotton bug noticed in Bhendi. Infested seeds become discoloured and shrivelled.

To manage this, conserve the bio control agent Harpactorcostalis predaceous on nymph and adults and spray Beauveria Bassiana @ 600ml per acre.

Spraying activities can be done during the non-rainy days.

Animal Husbandry:

Due to the prevailing weather conditions, cattle may get affected by Foot and mouth disease (FMD), Hence, farmers are advised to vaccinate their cattle in the nearby veterinary dispensary during this (January) month to protect the cattle from FMD.

Madurai

SMS Advisory	Chances of Moderate rain on 23 & 24 Jan. Maximum temperature would be in the range of 30°C to 31°C and the minimum temperature would be between 21°C - 23°C. Generally cloudy sky will appear for the next five days. Wind is expected with the speed of 10-12 Kmph from, Northeast East & directions.
--------------	--

General Advisory:

Extended range Forecast for next week (24th to 30th January 2025):

Rainfall:

As per extended range predictions, there is possibility of generally normal to slightly above normal rainfall likely over the district during 24th to 30th January 2025

Maximum Temperature:

Maximum temperatures are likely to be near normal to slightly below normal and are likely to be in the range 26°C to 28°C over the plains of the district during next week. 24th to 30th January 2025.

Minimum Temperature:

Minimum temperatures are likely to be generally normal to slightly above normal and are likely to be in the range 16°C to 20°C over the district during next week 24th to 30th January 2025.

During the dates 22nd and 23rd, Mist is likely to prevail during the early morning hours, allow your cattle to graze only 2 hours after sunrise.

Mist / Haze is very likely to prevail during the night and early morning hours. Hence, cattle / goats, cows and calves, may allowed to graze after 08.00Am in the morning. Tie the jute bags around the shed .Since the dew, laden grass may be a carrier of intermediate host of flukes.

Weather Based Agro-Advisories: (Maize, Paddy & Animal Husbandry)

Maize:

The prevalence of Stem flies is seen in Maize. The maggot feeds on the young growing shoots resulting in "dead hearts".

Set up the fish meal trap @ 12Nos/ha till the crop is 30 days old.

Spray Chlorotraniprol @ 100ml per acre.

Spraying activities can be done during the non-rainy days.

Paddy:

Due to the prevailing weather conditions the incense of Blast is seen in paddy. The disease can infect paddy at all growth stages and all aerial parts of the plant (Leaf, neck and node). Among the three, leaves and neck infections are more severe.

Specks originate on leaves and, subsequently enlarge into spindle-shaped spots with ashy centres. Several spots coalesce, big irregular patches.

Remove collateral weed hosts from bunds and channels, avoid excess nitrogen,

Apply N in three split doses (50% basal, 25% in the Tillering phase and 25% N in the panicle initiation stage).

After observing the initial infection of the disease, spray Tricyclozole 75 WP @ 100g/acre.

Animal Husbandry:

Due to the prevailing weather conditions, cattle may get affected by Foot and mouth disease (FMD), Hence, farmers are advised to vaccinate their cattle in the nearby veterinary dispensary during this (January) month to protect the cattle from FMD.

Pudukottai

SMS Advisory	Chances of Moderate rain on 23 Jan. Maximum temperature would be in the range of 29°C to 30°C and the minimum temperature would be between 21°C - 22°C. Generally cloudy sky will appear for the next five days. Wind is expected with the speed of 10-14 Kmph from, Southeast, East & Northeast directions.
--------------	--

General Advisory:

Extended range Forecast for next week (24th to 30th January 2025):

Rainfall:

As per extended range predictions, there is possibility of generally normal to slightly above normal rainfall likely over the district during 24th to 30th January 2025.

Maximum Temperature:

Maximum temperatures are likely to be near normal to slightly below normal and are likely to be in the range 28°C to 30°C over the coastal of the district during next week. 24th to 30th January 2025.

Minimum Temperature:

Minimum temperatures are likely to be normal to slightly above normal and are likely to be in the range 20°C to 22°C over the district during next week 24th to 30th January 2025.

During the dates 22nd and 23rd, Mist is likely to prevail during the early morning hours, allow your cattle to graze only 2 hours after sunrise.

Mist / Haze is very likely to prevail during the night and early morning hours. Hence, cattle / goats, cows and calves, may allowed to graze after 08.00Am in the morning. Tie the jute bags around the shed .Since the dew, laden grass may be a carrier of intermediate host of flukes.

Weather Based Agro-Advisories: (Black gram, Bhendi & Animal Husbandry)

Black gram:

Foliar spray of TNAU Pulse Wonder @ 2 kg/acre in 200 litres of water at flower initiation stage decreases flower shedding, increases yield and moisture stress tolerance.

Bhendi:

The incidence of mites is noticed in Bhendi. The symptoms are, leaves stippled with yellow, leaves may appear bronzed, and leaves are webbing covering.

To control, prepare a paste of Ginger @ 250gm, Chilli @ 250gm, and Garlic @ 250gm and dilute the paste in 70 litres of water.

Take 100ml of Ginger, Green chilli, and Garlic solution; add 250ml of well-fermented curd and 20ml of egg white with 10litres of water and spray.

Spraying activities should be carried out only on the non-raining days.

Animal Husbandry:

Due to the prevailing weather conditions, cattle may get affected by Foot and mouth disease (FMD), Hence, farmers are advised to vaccinate their cattle in the nearby veterinary dispensary during this (January) month to protect the cattle from FMD.

Ramanathapuram

SMS Advisory	Chances of Moderate rain during 23, 24 & 25 Jan. Maximum temperature would be in the range of 28°C to 29°C and the minimum temperature would be between 22°C - 23°C. Generally cloudy sky will appear for the next five days. Wind is expected with the speed of 12 Kmph from, Northeast & East directions.
--------------	---

General Advisory:

Extended range Forecast for next week (24th to 30th January 2025):

Rainfall:

As per extended range predictions, there is possibility of generally normal to slightly above normal rainfall likely over the district during 24th to 30th January 2025.

Maximum Temperature:

Maximum temperatures are likely to be near normal to slightly below normal and are likely to be in the range 28°C to 30°C over the coastal of the district during next week. 24th to 30th January 2025.

Minimum Temperature:

Minimum temperatures are likely to be normal to slightly above normal and are likely to be in the range 20°C to 22°C over the district during next week 24th to 30th January 2025.

During the dates 22nd and 23rd, Mist is likely to prevail during the early morning hours, allow your cattle to graze only 2 hours after sunrise.

Mist / Haze is very likely to prevail during the night and early morning hours. Hence, cattle / goats, cows and calves, may allowed to graze after 08.00Am in the morning. Tie the jute bags around the shed .Since the dew, laden grass may be a carrier of intermediate host of flukes.

Weather Based Agro-Advisories: (Paddy, Chilly & Animal Husbandry)

Paddy:

Normally the temperature of 25-30°C with relative humidity above 80 per cent is highly favourable for the possibilities of bacterial leaf blight in Rice.

If bacterial leafblight symptoms observed in the field, spray neem oil 3% or NSKE 5% with 200 litre of water to manage the BLB.

Plant protection activities should be carried out on non-rainy days.

Chilly:

To control the flower, and fruit falling and to increase the fruit set in the chilly crop, farmers are advised to spray NAA 10ppm (10 mg/litre of water) on the 60th and 100th days after planting.

And spray Triaccontanol @ 1.25 ml/l on 20, 40, 60 and 80th day of planting.

Spraying activities can be done during the non-rainy days.

Animal Husbandry:

Due to the prevailing weather conditions, cattle may get affected by Foot and mouth disease (FMD), Hence, farmers are advised to vaccinate their cattle in the nearby veterinary dispensary during this (January) month to protect the cattle from FMD.

Sivagangai

SMS Advisory	Chances of Moderate rain on 23 Jan & light rain on 24 Jan. Maximum temperature would be in the range of 30°C to 31°C and the minimum temperature would be between 21°C - 23°C. Generally cloudy sky will appear for the next five days. Wind is expected with the speed of 10-12 Kmph from, Northeast East & directions.
--------------	--

General Advisory:

Extended range Forecast for next week (24th to 30th January 2025):

Rainfall:

As per extended range predictions, there is possibility of generally normal to slightly above normal rainfall likely over the district during 24th to 30th January 2025

Maximum Temperature:

Maximum temperatures are likely to be near normal to slightly below normal and are likely to be in the range 26°C to 28°C over the plains of the district during next week. 24th to 30th January 2025.

Minimum Temperature:

Minimum temperatures are likely to be generally normal to slightly above normal and are likely to be in the range 16°C to 20°C over the district during next week 17th to 30th January 2025.

During the dates 22nd and 23rd, Mist is likely to prevail during the early morning hours, allow your cattle to graze only 2 hours after sunrise.

Mist / Haze is very likely to prevail during the night and early morning hours. Hence, cattle / goats, cows and calves, may allowed to graze after 08.00Am in the morning. Tie the jute bags around the shed .Since the dew, laden grass may be a carrier of intermediate host of flukes.

Weather Based Agro-Advisories: (Paddy, Mango & Animal Husbandry)

Paddy:

The incidence of Green leafhoppers noticed in Paddy fields. It affects the leaves from tip to downwards and becomes yellow in colour, retarded vigorous and stunted growth, and drying up of the plant due to sucking up of the leaf are the other symptoms.

This can be controlled by spraying the solution of Pungam oil @ 60ml + Iluppai oil @ 60ml + Neem oil @ 60ml + Sticky agent @ 10ml (Khadi soap @ 10gms) with 10 litres of water and mixing well and spraying 2 times at 12 days interval.

Also, fix light traps in the field to attract and destroy the insects.

Spraying activities can be done during the non-rainy days.

Mango:

It is important to control the flower and finches shedding in Mango crops. It is also essential to follow the yield-increasing practices in Mango.

To increase fruit retention, farmers are advised to spray, NAA @ 20ppm at the flowering stage. If the trees do not flower, by that time, to induce the flowering, spray any one of the following, 0.5% Urea (5g/lit.) OR 1% Potassium Nitrate (10g/lit.).

Spraying activities can be done during the non-rainy days.

Animal Husbandry:

Due to the prevailing weather conditions, cattle may get affected by Foot and mouth disease (FMD), Hence, farmers are advised to vaccinate their cattle in the nearby veterinary dispensary during this (January) month to protect the cattle from FMD.

Theni

SMS Advisory	Chances of Moderate rain on 23 & 24 Jan. Maximum temperature would be in the range of 29°C to 30°C and the minimum temperature would be between 20°C - 22°C. Generally cloudy sky will appear for the next five days. Wind is expected with the speed of 10-12 Kmph from, Northeast East & directions.
--------------	--

General Advisory:

Extended range Forecast for next week (24th to 30th January 2025):

Rainfall:

As per extended range predictions, there is possibility of generally normal to slightly above normal rainfall likely over the district during 24th to 30th January 2025

Maximum Temperature:

Maximum temperatures are likely to be near normal to slightly below normal and are likely to be in the range 26°C to 28°C over the plains of the district during next week. 24th to 30th January 2025.

Minimum Temperature:

Minimum temperatures are likely to be generally normal to slightly above normal and are likely to be in the range 16°C to 20°C over the district during next week 24th to 30th January 2025.

During the dates 22nd and 23rd, Mist is likely to prevail during the early morning hours, allow your cattle to graze only 2 hours after sunrise.

Mist / Haze is very likely to prevail during the night and early morning hours. Hence, cattle / goats, cows and calves, may allowed to graze after 08.00Am in the morning. Tie the jute bags around the shed .Since the dew, laden grass may be a carrier of intermediate host of flukes.

Weather Based Agro-Advisories: (Maize, Cotton & Animal Husbandry)

Maize:

The incense of Downy mildew is noticed in Maize. The symptoms appear on the leaf with Chlorotic streaks. Affected plants become stunted and exhibit a bushy appearance due to the shortening of internodes and white fungus growth is seen on both the surfaces of the leaf. Young plants are highly susceptible.

To manage this, rogue out affected plants and soil application of *Pseudomonas fluorescens* or *Trichoderma viride* @ 2½ kg per ha + sand at 20 days after sowing. Spraying activities can be done during the non-rainy days.

Cotton:

At this stage, nutrition disorders may be found in Cotton. In the case of Zinc deficient soils ZnSO₄ @ 50kg/ha as basal or ZnSO₄ 0.5% spray thrice at 45, 60 and 75 DAS.

When reddening occurs in leaves apply 5% MgSO₄, Urea (1.0%) and ZnSO₄ (0.10%) as a foliar spray on the 50th and 80th day to correct this malady.

In Mg deficient areas apply MgSo4 @ 20 kg/ha basally. Need-based foliar spray of 2% MgSo4 + 1% Urea during the boll formation stage is also recommended.

Animal Husbandry:

Due to the prevailing weather conditions, cattle may get affected by Foot and mouth disease (FMD), Hence, farmers are advised to vaccinate their cattle in the nearby veterinary dispensary during this (January) month to protect the cattle from FMD.

Virudhunagar

Crop	Stage	Agromet Advisory
Irrigated crops	Water management	Farmers are advised to postpone the irrigate based on the local weather.
Rainfed crops	Rainfall	Avoid spraying for next three days. Produce that has attained physiological maturity may be harvested and stored safely.
Rainfed & irrigated crops	Relative humidity/ Mist	In the absence of rainfall, an increase in relative humidity can significantly increase the risk of plant diseases. Farmers are advised to closely monitor their fields under such conditions and implement suitable preventive measures to safeguard their crops.
Chilli	Flowering and fruiting stage	<ul style="list-style-type: none"> • Increasing day temperature favours thrips. Spray Imidacloprid 17.8 % SL @3.0 ml/10 lit. • Prevailing weather is conducive for Gram caterpillar @ Emamectin benzoate 5 % SG @ 4 g/10 lit. • In order to meet the nutrient requirement spray 1% solution of 19:19:19 fertilizer.
Sunflower	Heading stage	The expected weather having low cloud cover and moderate to high humidity are conducive for the incidence of head borer. To control the pest, spray 5% Neem oil or 5% Neem Seed Kernal extract before egg laying.
Jasmine	Flowering stage	Prevailing weather is conducive for Blossom midge. Spray Thiamethoxam 2.5% WG @ 0.75 g/litre (or) Novaluron 3ml/lit. of water.
Guava	Fruiting stage	Prevailed weather condition is conducive for Fruit fly, to control spray malathion 50 EC @2ml/litre or Dimethoate 30 EC @ 1ml/litre.
Live stock	Relative humidity/ Mist	Increase in relative humidity chance for disease spread. Animals for grazing may be taken after sunrise.

Rain: 23&24.01-20&15 mm. Chilli- Thrips. spray Imidacloprid 17.8 % SL @3.0 ml/10 lit. and for Gram caterpillar @ Emamectin benzoate 5 % SG @ 4 g/10 lit...

Tirunelveli

Crop	Stage	Agromet Advisory
Irrigated crops	Water management	Farmers are advised to postpone the irrigation, based on crop required.
Rainfed & irrigated crops	Rainfall	It is advised to avoid spraying for three days; however, if necessary, spraying may be carried out based on local weather conditions.

Paddy	Tillering stage	Prevailed weather is conducive for Leaf folder and Stem borer. So farmers are advised to spray Azadirachtin 0.03% 1000ml/ha. (or) Chlorontrinirole 18.5%SC @ 150g/ha. (or) Thiamethoxam 25% WG @ 100g/ha.
Cotton	boll formation to boll bursting stage	In the prevailing weather, there is incidence of mealy bug. Spray neem oil 2% or NSKE 5% or fish oil rosin soap 25g/litre of water or chemical based insecticide of dimethoate or profenophos 2 ml/lit may be adopted as an alternative.
Chilli	Flowering to fruiting stage	<ul style="list-style-type: none"> Increasing day temperature favours thrips. Spray Imidacloprid 17.8 % SL @3.0 ml/10 lit. Prevailing weather is conducive for Gram caterpillar @ Emamectin benzoate 5 % SG @ 4 g/10 lit.
Sugarcane		Continuous rainfall may lodge the crop; hence, farmers are advised to provide support by propping and to practice earthing up.
Coconut	All stages	Rhinoceros beetle is noticed in the prevailed weather condition. To control application of Mixture of neem seed kernal powder and sand (1:2) @ 150 gm per tree, spray 250ml Metarrizhium culture + 750ml water in manure pits to check the perpetuation of the pest. For seedlings, apply Naphthalene balls 10.5 g (approx. three to four balls) covered with fine sand, once in 45 days.
Horticultural	Rainfall	Basin around the plant may be erected and mulching may be practiced to save the rain water.
Live stock	Relative humidity	Increase in relative humidity chance for disease spread. Animals for grazing may be taken after sunrise.

SMS: Rain:23&24.01-20&15 mm. Cotton - mealy bug. Spray neem oil 2%. Chilli- Gram caterpillar @ Emamectin benzoate 5 % SG @ 4 g/10 lit.

Thoothukudi

Crop	Stage	Agromet Advisory
Irrigated crops	Irrigation management	Farmers are advised to postpone the irrigation based on crop requirement.
Rainfed & irrigated crops	Rainfall	It is advised to avoid spraying for three days; however, if necessary, spraying may be carried out based on local weather conditions.
Rainfed & irrigated crops	Relative humidity/Mist	An increase in relative humidity increases the risk of diseases. Hence, farmers are advised to monitor their fields and take appropriate preparatory measures accordingly.
Pulses	Maturity stage	Harvest the pods immediately and store it safely to prevent fungal spread.
Paddy	Vegetative stage	Temperature of 25-30°C with above 80 per cent relative humidity is highly favourable for Brown Spot. To control spray Mancozeb 500 g. Prevailing weather condition is favorable for Leaf folder incidence. Farmers are advised to spray Azadirachtin 0.03%@1000 ml/ha.
Cotton	square formation stage to boll formation	High relative humidity coupled with cloudy weather chance for Cercospora leaf spot. To control spray Copper oxychloride @ 500 g/ acre. In the prevailing weather, there is incidence of mealy bug. Spray neem oil 2% or NSKE 5% or fish oil rosin soap 25g/litre of water or chemical based insecticide of dimethoate or profenophos @ 2 ml/lit may be adopted as an alternative.
Groundnut	Peg formation	The expected weather is conducive for the incidence of leaf minor- ETL: 1 larvae/meter row. Apply anyone of the insecticides Dimethiate 30 EC @660 ml/ha (or) Malathion 50 EC 1.25 l/ha.
Sunflower	Heading stage	The expected weather having low cloud cover and moderate to high humidity are conducive for the incidence of head borer. To control the pest, spray 5% Neem oil or

		5% Neem Seed Kernal extract before egg laying.
Banana	All stages	Earthing up should be practiced to avoid lodging
Live stock	Relative humidity	Increase in relative humidity chance for disease spread. Animals for grazing may be taken after sunrise.
Human	Rainfall	The public is requested to carry umbrellas or raincoats and take preventive measures against the cold.

SMS: Rain.23-25.01-20,15&5 mm. Cotton-leaf spot- spray Copper oxychloride @ 500 g/ acre.
Groundnut- Leaf minor- Spray Dimethiate 30 EC 660 ml/ha (or) Malathion 50 EC 1.25 l/ha

Tenkasi

Crop	Stage	Agromet Advisory
Irrigated crops	Water management	Farmers are advised to postpone the irrigation, based on crop required.
Rainfed & irrigated crops	Rainfall	It is advised to avoid spraying for three days; however, if necessary, spraying may be carried out based on local weather conditions.
Paddy	Tillering stage	Prevailed weather is conducive for Leaf folder and Stem borer. So farmers are advised to spray Azadirachtin 0.03% 1000ml/ha. (or) Chlorontrinirole 18.5%SC @ 150g/ha. (or) Thiamethoxam 25% WG @ 100g/ha.
Sugarcane		Continuous rainfall may lodge the crop; hence, farmers are advised to provide support by propping and to practice earthing up.
Coconut	All stages	Rhinoceros beetle is noticed in the prevailed weather condition. To control application of Mixture of neem seed kernal powder and sand (1:2) @ 150 gm per tree, spray 250ml Metarrizhium culture + 750ml water in manure pits to check the perpetuation of the pest. For seedlings, apply Naphthalene balls 10.5 g (approx. three to four balls) covered with fine sand, once in 45 days.
Horticultural	Rainfall	Basin around the plant may be erected and mulching may be practiced to save the rain water.
Live stock	Relative humidity	Increase in relative humidity chance for disease spread. Animals for grazing may be taken after sunrise.

SMS: Rain:23&24.01-24&15 mm. Paddy- Leaf folder and Stem borer-spray Azadirachtin 0.03% 1000ml/ha.

Kanyakumari

AGRO ADVISORIES

S. N.	CROP	STAGES	ADVISORIES
1.	Banana	All stages	Since the wind speed is 10 - 12 km/hr staking should be given to banana.
2.	Fruit trees and Tree spices	All stages	Strengthening the basins may be taken up for better harvesting of rains.

\\	Banana	Shooting stage.	Use transparent polythene sleeves (4%) to cover the bunches to increase the quality.
4.	Coconut	All stage	Husk burial can be done in coconut basins or in the interspaces to preserve rain water.
5.	Pepper	Harvesting stage.	Harvest should be done by hand picking the whole spikes when few berries in the spike start turning red. The berries are separated and dipped in hot water (80oC) for one minute and sun dried for 7 to 10 days.

SMS Advisory

Basin preparation for fruits and tree spices may be taken for better rain water harvest.

Salem

WEATHER ADVISORY BULLETIN FOR LIVESTOCK, POULTRY AND AGRICULTURE

Livestock, Poultry & Crop	Stage	Weather advisory
Livestock	General	<p>Due to the prevailing cold weather condition, livestock rearers are advised to allow the livestock for grazing only after 2 hours of sunrise to avoid fluke infestation. To prevent the infestation of pneumonia and rhinitis of calves and kids, they should be protected against cold shock. The side wall of young animals shed must be shielded with gunny bag to prevent cold shock.</p> <p>The top sand (10 cm) of goat house must be replaced with a new sand in every six month so as to prevent parasitic attack.</p> <p>To prevent mosquito menace in livestock rearing areas fumigation with vitex negundo (notchi leaves) leaves weekly once is recommended.</p>
Agro advisory from Krishi Vigyan Kendra, Namakkal		
Sugarcane	Planting stage	Farmers are requested to apply 20 kg sugarcane micronutrient mixture along with 200 kg of farmyard manure in ratoon sugarcane per acre.
Small onion	Vegetative stage	The transplanted small onion crop may express tip drying due to prevalence of dew drops in the morning hours. Hence the small onion growers are advised to follow pairing the coir rope over the onion crop during early morning by two labours for two days in a week. This technology prevents the deposition of dew drops in the tip of the onion leaf sheath.
Banana	Vegetative stage	Farmers are requested to apply banana shakthi @ 20 gram / litre of water along with lemon juice at 3 , 5 and 7 month after planting to increase the yield of banana.

Crops	Vegetative stage	Farmers are requested to give foliar spraying with nano urea as per the recommendation given in the bottle for all crops during critical growth stages in order to meet out the nutrient demand.
-------	------------------	--

€

Namakkal

WEATHER ADVISORY BULLETIN FOR LIVESTOCK, POULTRY AND AGRICULTURE

Livestock, Poultry & Crop	Stage	Weather advisory
Livestock	General	<p>Due to the prevailing cold weather condition, livestock rearers are advised to allow the livestock for grazing only after 2 hours of sunrise to avoid fluke infestation. To prevent the infestation of pneumonia and rhinitis of calves and kids, they should be protected against cold shock. The side wall of young animals shed must be shielded with gunny bag to prevent cold shock.</p> <p>The top sand (10 cm) of goat house must be replaced with a new sand in every six month so as to prevent parasitic attack.</p> <p>To prevent mosquito menace in livestock rearing areas fumigation with <i>vitex negundo</i> (notchi leaves) leaves weekly once is recommended.</p>
Agro advisory from KrishiVigyan Kendra, Namakkal		
Sugarcane	Planting stage	Farmers are requested to apply 20 kg sugarcane micronutrient mixture along with 200 kg of farmyard manure in ratoon sugarcane per acre.
Small onion	Vegetative stage	The transplanted small onion crop may express tip drying due to prevalence of dew drops in the morning hours. Hence the small onion growers are advised to follow pairing the coir rope over the onion crop during early morning by two labours for two days in a week. This technology prevents the deposition of dew drops in the tip of the onion leaf sheath.
Banana	Vegetative stage	Farmers are requested to apply banana shakthi @ 20 gram / litre of water along with lemon juice at 3 , 5 and 7 month after planting to increase the yield of banana.
Crops	Vegetative stage	Farmers are requested to give foliar spraying with nano urea as per the recommendation given in the bottle for all crops during critical growth stages in order to meet out the nutrient demand.

Dharmapuri

WEATHER ADVISORY BULLETIN FOR LIVESTOCK, POULTRY AND AGRICULTURE

Livestock, Poultry & Crop	Stage	Weather advisory
Livestock	General	<p>Due to the prevailing cold weather condition, livestock rearers are advised to allow the livestock for grazing only after 2 hours of sunrise to avoid fluke infestation. To prevent the infestation of pneumonia and rhinitis of calves and kids, they should be protected against cold shock. The side wall of young animals shed must be shielded with gunny bag to prevent cold shock.</p> <p>The top sand (10 cm) of goat house must be replaced with a new sand in every six</p>

		month so as to prevent parasitic attack. To prevent mosquito menace in livestock rearing areas fumigation with vitex negundo (notchi leaves) leaves weekly once is recommended.
Agro advisory from KrishiVigyan Kendra, Namakkal		
Sugarcane	Planting stage	Farmers are requested to apply 20 kg sugarcane micronutrient mixture along with 200 kg of farmyard manure in ratoon sugarcane per acre.
Small onion	Vegetative stage	The transplanted small onion crop may express tip drying due to prevalence of dew drops in the morning hours. Hence the small onion growers are advised to follow pairing the coir rope over the onion crop during early morning by two labours for two days in a week. This technology prevents the deposition of dew drops in the tip of the onion leaf sheath.
Banana	Vegetative stage	Farmers are requested to apply banana shakthi @ 20 gram / litre of water along with lemon juice at 3 , 5 and 7 month after planting to increase the yield of banana.
Crops	Vegetative stage	Farmers are requested to give foliar spraying with nano urea as per the recommendation given in the bottle for all crops during critical growth stages in order to meet out the nutrient demand.

Krishnagiri

WEATHER ADVISORY BULLETIN FOR LIVESTOCK, POULTRY AND AGRICULTURE

Livestock, Poultry & Crop	Stage	Weather advisory
Livestock	General	Due to the prevailing cold weather condition, livestock rearers are advised to allow the livestock for grazing only after 2 hours of sunrise to avoid fluke infestation. To prevent the infestation of pneumonia and rhinitis of calves and kids, they should be protected against cold shock. The side wall of young animals shed must be shielded with gunny bag to prevent cold shock. The top sand (10 cm) of goat house must be replaced with a new sand in every six month so as to prevent parasitic attack. To prevent mosquito menace in livestock rearing areas fumigation with vitex negundo (notchi leaves) leaves weekly once is recommended.
Agro advisory from Krishi Vigyan Kendra, Namakkal		
Sugarcane	Planting stage	Farmers are requested to apply 20 kg sugarcane micronutrient mixture along with 200 kg of farmyard manure in ratoon sugarcane per acre.
Small onion	Vegetative stage	The transplanted small onion crop may express tip drying due to prevalence of dew drops in the morning hours. Hence the small onion growers are advised to follow pairing the coir rope over the onion crop during early morning by two labours for two days in a week. This technology prevents the deposition of dew drops in the tip of the onion leaf sheath.
Banana	Vegetative stage	Farmers are requested to apply banana shakthi @ 20 gram / litre of water along with lemon juice at 3 , 5 and 7 month after planting to increase the yield of banana.

Crops	Vegetative stage	Farmers are requested to give foliar spraying with nano urea as per the recommendation given in the bottle for all crops during critical growth stages in order to meet out the nutrient demand.
-------	------------------	--

Karaikal

Agro Advisory

Crop	Stage/Particulars	Agromet Advisory
Rice	Active tillering	<p>Drain the excess water from the paddy fields leaving a thin film of water.</p> <p>In paddy fields thinning of tillers may be done and utilized to gap fill the damaged areas.</p> <p>In paddy, after one week of foliar spray top dressing of 50 kg urea and 20 kg potash along with 10 kg of neem cake per hectare may be done.</p> <p>To manage rice leaf folder release Trichogramma chilonis 5cc (1,00,000/ha) at 37, 44, 51 day after planting. Avoid excess application of nitrogen fertilizers. Setup light trap to attract adult moths. Setup T- shaped bird perches for predatory birds to control these pests.</p> <p>Apply cartaphydrochloride 50% SP @ 2g/l or flubendiamide 20 WG @ 0.25 g/l or thiamethoxam 25 WG @ 0.2 g/l.</p>

SMS: Light to moderate rain is expected for next few days. Hence, postpone irrigation to crops.

Puducherry

Agro Advisory

Crop	Stage/Particulars	Agromet Advisory
Rice	Active tillering	<p>Drain the excess water from the paddy fields leaving a thin film of water.</p> <p>In paddy fields thinning of tillers may be done and utilized to gap fill the damaged areas.</p> <p>Foliar spray of 1% urea along with 0.5 % ZnSO₄ (5 kg urea +2.5 kg ZnSO₄ in 500 litres of water /ha) may be given.</p> <p>In paddy, after one week of foliar spray top dressing of 50 kg urea and 20 kg potash along with 10 kg of neem cake per hectare may be done.</p> <p>To manage rice leaf folder release Trichogramma chilonis 5cc (1,00,000/ha) at 37, 44, 51 day after planting. Avoid excess application of nitrogen fertilizers. Setup light trap to attract adult moths. Setup T- shaped bird perches for predatory birds to control these pests. Apply cartaphydrochloride 50% SP @ 2g/l or flubendiamide 20 WG @ 0.25 g/l or thiamethoxam 25 WG @ 0.2 g/l.</p>

SMS: Dry weather is expected for next five days.

