

तमिलनाडु के लिए राज्य स्तरीय समग्र कृषि-मौसम परामर्श बुलेटिन



State Composite Agro-meteorological Advisory Bulletin for Tamil Nadu and Puducherry Bulletin No. 075/2024

For the period 0830 IST, 16th September 2024 to
0830 IST, 21st September 2024

Issued on Monday, 16th September 2024

Issued by

DDGM, Regional Meteorological Centre, India Meteorological Department,
Chennai in collaboration with TNAU and nine AMFU's of Agro climatic Zones of
the Tamil Nadu state

Agro climatic zones of the state

Sl. No	Agro climatic zone	Districts	Agro met field Unit (AMFU) location
1	Northeastern zone	Kanchipuram, Tiruvallur, Cuddalore Tiruvannamalai, Chennai, Villupuram , Vellore	Chennai
2	Northwestern zone	Dharmapuri, Krishnagiri, Salem and Namakkal	Namakkal
3	Western Zone	Erode, Tiruppur and Coimbatore,	Coimbatore,
4	Cauvery Delta zone	Thanjavur, Nagapattinam, Tiruvarur, Karur, Perambalur, Ariyalur and Tiruchirapalli.	Adudurai
5	Southern zone	Virudhunagar, Tirunelveli and Thoothukudi	Kovilpatti
6	South Zone	Pudukkottai, Madurai, Dindigul, Theni, Ramanathapuram and Sivagangai	Kannivadi
7	High rainfall zone	Kanyakumari	Pechiparai
8	Hilly zone	Nilgiris	Ooty
9	Coastal Zone	Karaikal and Pondicherry	Karaikal



Past Weather Summary for the period 13.09.24 to 15.09.24 for the State of Tamilnadu & Puducherry

Temperature:

Maximum Temperature of range **31°C – 41°C** prevailed over the state. Kodaikanal and Uthagamandalam recorded Maximum temperature range **19°C – 22°C** during the period.

Minimum temperature of range **23°C - 29°C** prevailed over the State. Kodaikanal and Uthagamandalam recorded Minimum temperature of range **11°C - 13°C** during the same period.

Spatial distribution of Rainfall

Spatial distribution of Rainfall	Tamil Nadu	Puducherry
Widespread (Most places)	--	--
Fairly widespread (Many places)	--	--
Scattered (Few Places)	--	15.09.24
Isolated (One or Two Places)	13.09.24 to 15.09.24	--
Dry	--	13.09.24 & 14.09.24

Chief Amounts of Rainfall (in cms):-

13.09.24: Vint Worth Estate (dist The Nilgiris) - 1.

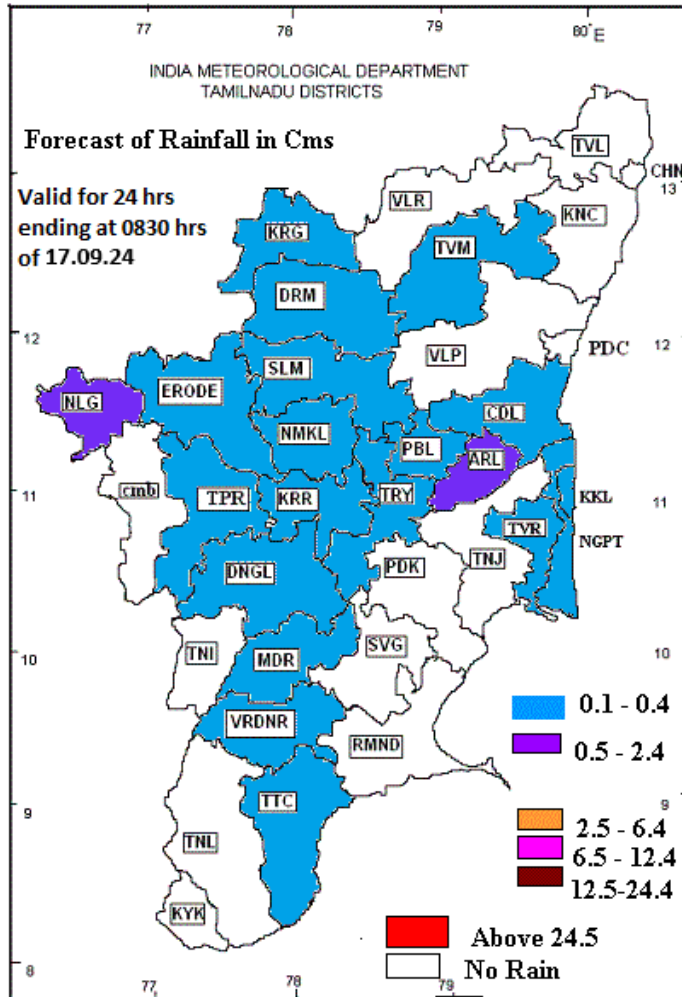
14.09.24: Valparai PAP (dist Coimbatore) - 1

15.09.24: Karaikudi (dist Sivagangai) 3; Jayamkondam (dist Ariyalur), Chinnakalar (dist Coimbatore), Naduvattam (dist The Nilgiris), Senthurai ARG (dist Ariyalur), Sholayar (dist Coimbatore), Devakottai (dist Sivagangai) 1 each.

**DISTRICT LEVEL ENSEMBLE WEATHER FORECAST ISSUED ON: 16.09.24
VALID FOR THE NEXT 5 DAYS**

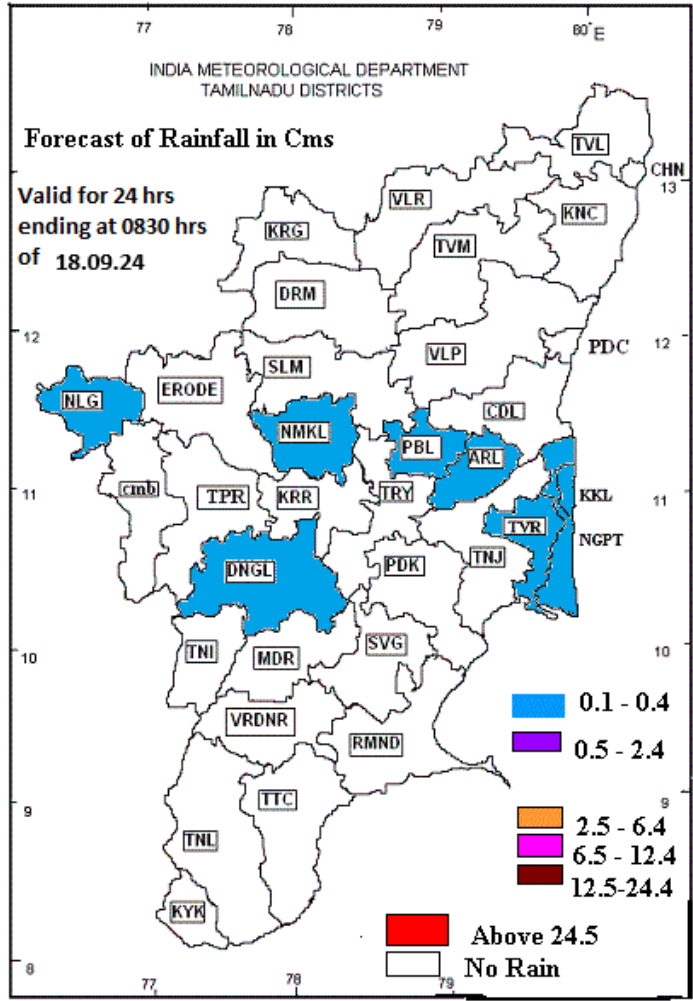


**INDIA METEOROLOGICAL DEPARTMENT
REGIONAL METEOROLOGICAL CENTRE, CHENNAI**



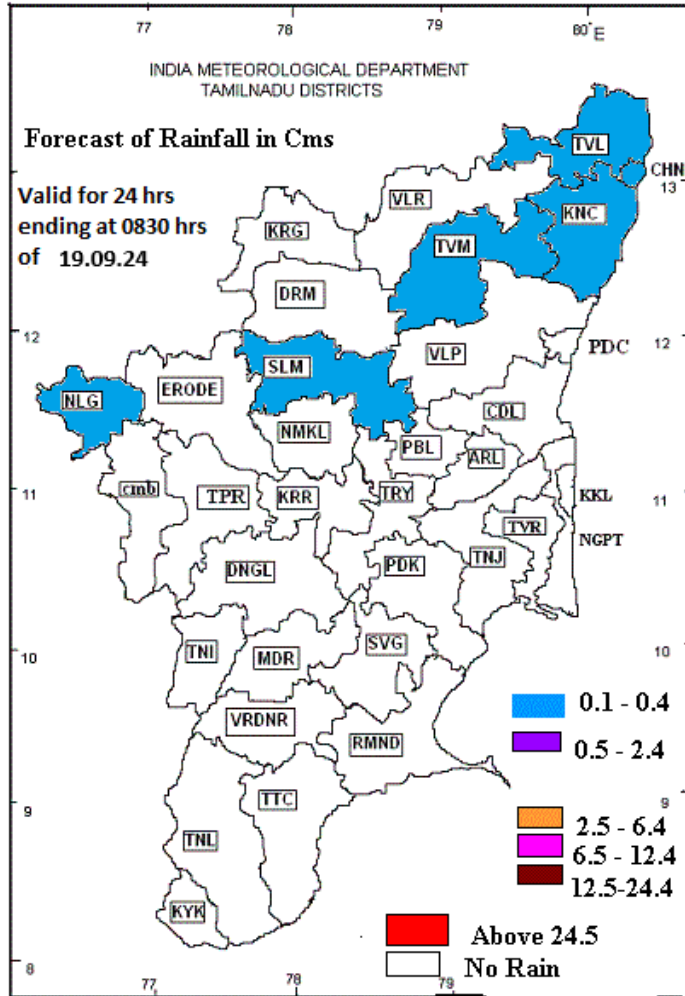


INDIA METEOROLOGICAL DEPARTMENT
REGIONAL METEOROLOGICAL CENTRE, CHENNAI



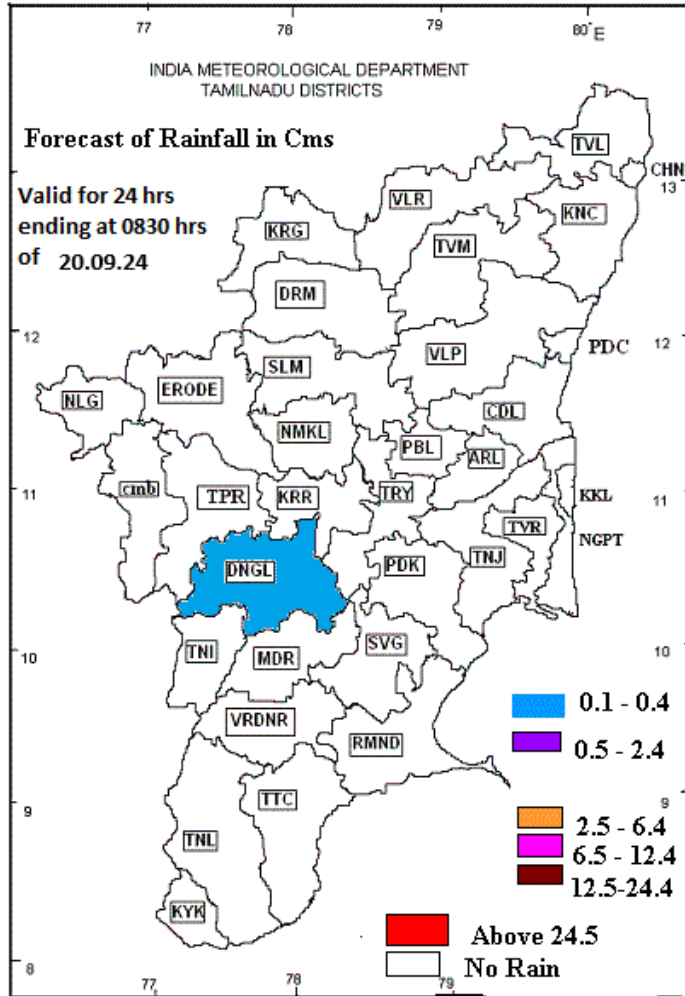


INDIA METEOROLOGICAL DEPARTMENT
REGIONAL METEOROLOGICAL CENTRE, CHENNAI



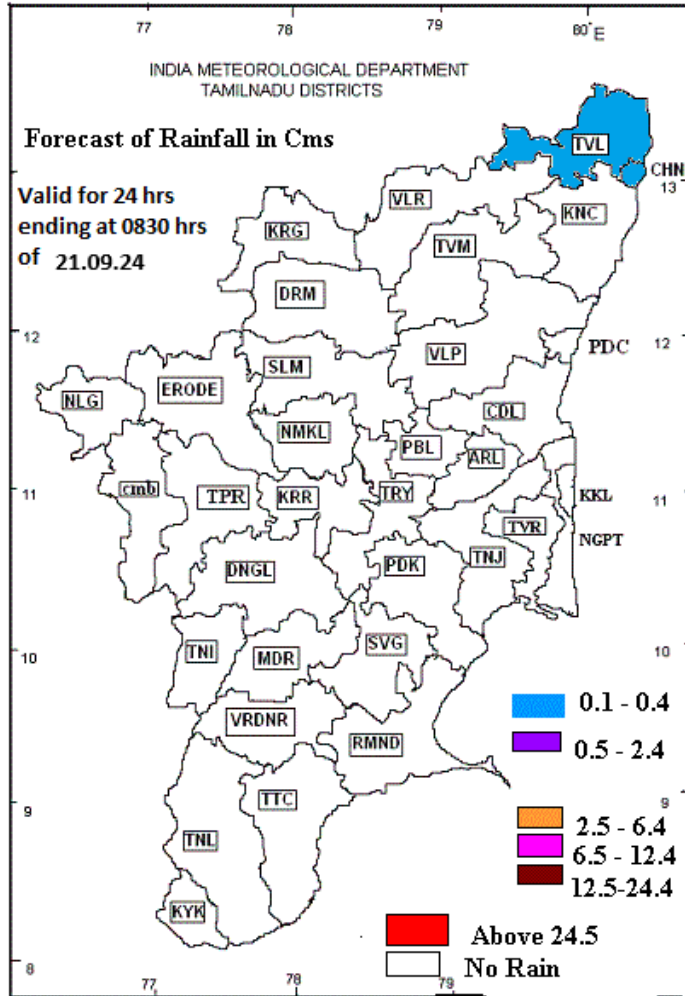


INDIA METEOROLOGICAL DEPARTMENT
REGIONAL METEOROLOGICAL CENTRE, CHENNAI





INDIA METEOROLOGICAL DEPARTMENT
REGIONAL METEOROLOGICAL CENTRE, CHENNAI



District-wise Agromet Advisories

Chennai, Kancheepuram, Villupuram, Tiruvannamalai, Tiruvallur, Vellore and Cuddalore

SMS Advisory:

(17.09.2024-21.09.2024) Light to moderate rain is likely to occur at isolated places over Tamilnadu,

Livestock Advisory:

1. The livestock must be provided with clean wholesome drinking water all round the clock.
2. To prevent the methane and ammonia accumulation in pig sty provision of proper ventilation is necessary
3. To prevent water stagnation proper drainage must be provided in livestock shelter
4. The chicks must be given artificial heat (1 watt / chick or coal brooder for every 200 chicks for first 2 weeks of age)
5. The livestock must not be allowed to stand in stagnated water to prevent foot rot
6. The piglet must be protected from cold drafts to avoid shock, they must be provided with artificial heat source or incandescent bulb as the source of heat.
7. Higher air temp and relative humidity will pre dispose the rabbit to respiratory distress; to prevent this rabbitry must be maintained damp free.
8. To counteract over occurrence of infection during rainy season pregnant goat (adult goat) must be provided with vitamin and mineral supplementation

Agricultural advisory

Rice:

Spray the TNAU Rice reap @ 3kg / acre by dissolving in 200 litre of water after adding required quantity of wetting agent at booting stage at 10days interval. It improves spikelet fertility, grain filling rate, tolerance against drought and high temperature.

Due to prevailing weather condition possible for thrips infestation in paddy crop. To manage them, spray thiamethoxam 8.0g/ for 20 cent of nursery field. In transplanted field spray Azadiractin 400 ml/acre or thiamethoxam 40 g/ac. Due to prevailing weather condition leaf folder and stem borer infestation is found in paddy crop. To manage them, spray carbosulfan 400 ml/ac or cartap hydrochloride 600 g/ac during morning or evening hours.

The forecasted weather may cause leaf folder infestation in rice crop. The farmers are advised to monitor the field, if symptoms are observed it's advised to spray Chlorantraniliprole 18.5% 150 ml/ha.

Groundnut:

To increase flower retention , pod filling and to induce drought tolerance apart from yield improvement , 2 sprays of groundnut rich @ 2 kg / acre(for each spray) at 35 DAS (50 % flowering) and 45 DAS (pod development stage).

Due to prevailing weather conditions possible for thrips infestation in groundnut crop. To control spray quinalphos 25 EC 560 ml/ac. Due to prevailing weather conditions possible for leaf miner infestation in groundnut crop. To control set light trap @ 1/ha between 8 and 11 pm at ground level and spray quinalphos 25 EC 560 ml/ac.

To increase flower retention , pod filling and to induce drought tolerance apart from yield improvement , 2 sprays of groundnut rich @ 2 kg / acre(for each spray) at 35 DAS (50 % flowering) and 45 DAS (pod development stage). To provide adequate drainage facility in lowland areas.

Coconut:

To control red palm weevil in coconut, apply neem seed kernel powder + sand (1:2) @150 g per palm in the base of the 3 inner most leaves in the crown. To control rhinoceros beetle, setup Rhino lure pheromone trap @ 2 traps/acre.

Banana:

High wind speed (>10 kmph) is expected on forthcoming days, so prop up 5 month old banana trees.

Coimbatore

Agro Advisory

Crop	Stage	Advisory
General		<p>Dry week is expected for the next five days and the wind speed is expected around 10 – 26 kmph in Western zone districts.</p> <p>Schedule the irrigation based on soil moisture.</p> <p>By utilizing favourable weather, land preparation may be done for the ensuing northeast monsoon season.</p> <p>Increasing temperature lead to hot & discomfort weather is very likely to prevail at interior districts of western zone.</p>
Rice	<p>Nursery</p> <p>Harvest</p> <p>Planting</p> <p>Maximum tillering</p>	<p>Four leaf rice samba seedlings may be pulled out and transplanted @ two seedlings per hill, considering the anticipated weather. Before planting dip the root of the seedlings in the slurry of 40 lit containing 1kg of Azosphirillum and 1kg of Phosphobacteria.</p> <p>In the absence of wet nursery, direct dry seeding of medium duration rice can be done with the sufficient irrigation for Samba season.</p> <p>Considering the prevailing weather condition, early planted Kuruvai rice may be harvested and grains should be dried to 12% moisture content before storing.</p> <p>Due to hot and high wind speed tip drying of leaves is observed in rice crop by collision of leaves, which is not a disease. Hence avoid spraying of chemicals.</p>

Maize & Cotton	Early vegetative	Thinning and gap filling may be done for irrigated cotton and maize is advised to maintain population.
Groundnut	Harvest	By utilizing the dry weather, harvest, dry and store the early sown Groundnut and minor millets.
Sugarcane	Vegetative	Considering the high wind speed with light rainfall provide propping to the sugarcane by tying opposite row to prevent from lodging.
Tomato	Vegetative	Prevailing continuous dry weather is favorable for the thrips attack in vegetables. Hence monitor the crop carefully and if required spray Dimethoate @ 2ml per liter of water.
Banana		Considering the high wind speed above 10 kmph, provide supports to

		the banana of more than five months old to prevent from lodging.
Turmeric	Rhizome development	Turmeric is at bulking stage, which is critical for both moisture stress and excess water. Hence, care to keep sufficient moisture and avoid excess moisture or over dry.
Tapioca	Planting	Best time for planting tapioca under irrigated condition. The tapioca sett must be 15 cm long with 8-10 nodes, taken from middle portion of the stem. Before planting sett should be dipped in carbendazim solution @ 1g in 1 lit water for 15 minutes.
Animal Husbandry		Increasing temperature may result in hot & discomfort weather to animals. Provide adequate drinking water.

SMS advisory:

Increasing temperature may result in hot & discomfort weather to animals. Provide adequate drinking water.

Erode

Agro Advisory

Crop	Stage	Advisory
General		<p>Dry week is expected for the next five days and the wind speed is expected around 10 – 26 kmph in Western zone districts.</p> <p>Schedule the irrigation based on soil moisture.</p> <p>By utilizing favourable weather, land preparation may be done for the ensuing northeast monsoon season.</p> <p>Increasing temperature lead to hot & discomfort weather is very likely to prevail at interior districts of western zone.</p>
Rice	Nursery Harvest Planting Maximum tillering	<p>Four leaf rice samba seedlings may be pulled out and transplanted @ two seedlings per hill, considering the anticipated weather. Before planting dip the root of the seedlings in the slurry of 40 lit containing 1kg of Azospirillum and 1kg of Phosphobacteria.</p> <p>In the absence of wet nursery, direct dry seeding of medium duration rice can be done with the sufficient irrigation for Samba season.</p> <p>Considering the prevailing weather condition, early planted Kuruvai rice may be harvested and grains should be dried to 12% moisture content before storing.</p> <p>Due to hot and high wind speed tip drying of leaves is observed in rice crop by collision of leaves, which is not a disease. Hence avoid spraying of chemicals.</p>

Maize & Cotton	Early vegetative	Thinning and gap filling may be done for irrigated cotton and maize is advised to maintain population.
----------------	------------------	--

Groundnut	Harvest	By utilizing the dry weather, harvest, dry and store the early sown Groundnut and minor millets.
Sugarcane	Vegetative	Considering the high wind speed with light rainfall provide propping to the sugarcane by tying opposite row to prevent from lodging.
Tomato	Vegetative	Prevailing continuous dry weather is favorable for the thrips attack in vegetables. Hence monitor the crop carefully and if required spray Dimethoate @ 2ml per liter of water.
Banana		Considering the high wind speed above 10 kmph, provide supports to the banana of more than five months old to prevent from lodging.
Turmeric	Rhizome development	Turmeric is at bulking stage, which is critical for both moisture stress and excess water. Hence, care to keep sufficient moisture and avoid excess moisture or over dry.
Tapioca	Planting	Best time for planting tapioca under irrigated condition. The tapioca sett must be 15 cm long with 8-10 nodes, taken from middle portion of the stem. Before planting sett should be dipped in carbendazim solution @ 1g in 1 lit water for 15 minutes.
Animal Husbandry		Increasing temperature may result in hot & discomfort weather to animals. Provide adequate drinking water.

SMS advisory:

Increasing temperature may result in hot & discomfort weather to animals. Provide adequate drinking water.

Tiruppur

Agro Advisory:

Crop	Stage	Advisory
General		Dry week is expected for the next five days and the wind speed is expected around 10 – 26 kmph in Western zone districts. Schedule the irrigation based on soil moisture. By utilizing favourable weather, land preparation may be done for the ensuing northeast monsoon season. Increasing temperature lead to hot & discomfort weather is very likely to prevail at interior districts of western zone.
Maize & Cotton	Early vegetative	Thinning and gap filling may be done for irrigated cotton and maize is advised to maintain population.
Groundnut	Harvest	By utilizing the dry weather, harvest, dry and store the early sown Groundnut and minor millets.
Sugarcane	Vegetative	Considering the high wind speed with light rainfall provide propping to the sugarcane by tying opposite row to prevent from lodging.
Tomato	Vegetative	Prevailing continuous dry weather is favorable for the thrips attack in vegetables. Hence monitor the crop carefully and if required spray Dimethoate @ 2ml per liter of water.
Banana		Considering the high wind speed above 10 kmph, provide supports to the banana of more than five months old to prevent from lodging.
Animal Husbandry		Increasing temperature may result in hot & discomfort weather to animals. Provide adequate drinking water.

SMS advisory:

Increasing temperature may result in hot & discomfort weather to animals. Provide adequate drinking water.

Ariyalur, Karur, Nagapattinam, Perambalur, Thanjavur, Tiruvarur and Tiruchirapalli

Agro Advisory

Crop	Stage	Advisory
General		Farmers are requested to download and utilize the agricultural based mobile apps suggested by TNAU (TNAU AAS, Meghdoot and DAMINI).
Rice	Harvest	Harvest the matured kuruvai paddy.
	Main field	By utilizing weather condition land can be prepared for samba rice cultivation.
Coconut	Bearing Stage	To reduce the button shedding under this weather condition, feed the roots with 200 ml of coconut tonic per palm.
Cattle	Cow	Since the onset of rainy season may attract mosquitoes breeding, farmers are advised to give Notchi leaves fumigation in dairy barn. Insect population has detrimental effect on milk quality.

SMS advisory

Harvest the matured kuruvai paddy.

Dindigul

SMS Advisory	Chances of very light rain during 17, 18 & 20 Sep. Maximum temperature would be in the range of 40°C to 41°C and the minimum temperature would be between 27°C - 28°C. Partly cloudy sky will appear for the next five days. Wind is expected with the speed of 12 – 14 Kmph from, Northwest direction.
--------------	---

General Advisory:

Extended range Forecast for next week (20th to 26th September 2024):

Rainfall:

As per extended range predictions, there is possibility of near normal rainfall likely over the district during 20th to 26th September 2024

Maximum Temperature:

Maximum temperatures are likely to be near normal to generally above normal and are likely to be in the range 28°C to 32°C over the plains of the district during next week. 20th to 26th September 2024.

Minimum Temperature:

Minimum temperatures are likely to be near normal to slightly above normal and are likely to be in the range 20°C to 24°C over the district during next week 20th to 26th September 2024.

Agriculture:

There is a rise in maximum temperature for the forthcoming days, and due to this the soil moisture content may be reduced.

Hence, the horticultural farmers are advised to take up mulching around the root basin of the crop with dried leaves, grass and other farm wastes to retain the soil moisture content.

Due to hot and humid conditions, discomfort weather is likely at isolated pockets over the district on next two days (17.09.2024 & 18.09.2024). Hence farmers are advised to plan their field activities during morning and evening hours and avoid working in the field during 12 noon to 4 Pm. Stay safe and take care. Drink adequate water.

Weather Based Agro-Advisories: (Lab Lab, Jasmine & Animal Husbandry)

Lab Lab:

The chances of incidence of Leaf hopper in LabLab crop. The symptoms are, leaves mottle and yellowish in colour, Green colour insects found in the under surface of leaves. Spray the infested crop with E1mamectin @ 1gm per litre of water. Plant protection activities can be done, only on non-rainy days.

Jasmine:

The incidence of sucking pests is noticed in floricultural crops such as Rose, Jasmine and Tuberose.

These pests affect at all the stages of the crop.

To control the sucking pests, tie Yellow sticky trap at 15-20 traps per acre.

Using chemical method, spraying of Prophenophos @ 2 ml per litre of water is recommended.

Animal Husbandry:

The utensils used for milking can become grossly contaminated by bacteria on ancillary equipment which must also be cleaned and disinfected effectively.

Refrigerated bulk milk tanks can be cleaned either manually using cold or warm detergent/disinfectant solutions, or for the larger tanks, by automatic, programmed equipment.

In either case, cold water chlorinated (50 ppm) rinse proceeds and follows the washing solution. They should then be stored in the dairy to drain.

Madurai

SMS Advisory	Chances of very light rain on 17 Sep. Maximum temperature would be in the range of 40°C to 41°C and the minimum temperature would be between 27°C - 28°C. Partly cloudy sky will appear for the next five days. Wind is expected with the speed of 8 – 10 Kmph from, West & Northwest directions.
--------------	---

General Advisory:

Extended range Forecast for next week (20th to 26th September 2024):

Rainfall:

As per extended range predictions, there is possibility of near normal rainfall likely over the district during 20th to 26th September 2024.

Maximum Temperature:

Maximum temperatures are likely to be near normal to generally above normal and are likely to be in the range 28°C to 32°C over the plains of the district during next week. 20th to 26th September 2024.

Minimum Temperature:

Minimum temperatures are likely to be near normal to slightly above normal and are likely to be in the range 20°C to 24°C over the district during next week 20th to 26th September 2024.

Agriculture:

There is a rise in maximum temperature for the forthcoming days, and due to this the soil moisture content may be reduced.

Hence, the horticultural farmers are advised to take up mulching around the root basin of the crop with dried leaves, grass and other farm wastes to retain the soil moisture content.

Due to hot and humid conditions, discomfort weather is likely at isolated pockets over the district on next two days (17.09.2024 & 18.09.2024). Hence farmers are advised to plan their field activities during morning and evening hours and avoid working in the field during 12 noon to 4 Pm. Stay safe and take care. Drink adequate water.

Weather Based Agro-Advisories: (Paddy, Sugarcane & Animal Husbandry)

Paddy:

Kind attention to Paddy cultivators, paddy crops are prone to the attack of sap sucking insects due to high humidity in the air. Spray Azadirachtin @ 2ml/litre of water with sticking paste, to control thrips and sap sucking insects.

Sugarcane:

Top dressing with fertilizers will give good results in Sugarcane cultivation.

In the case of the lift irrigation belt, apply 225 kg of nitrogen and 112 ½ kg of K₂O per hectare in three equal splits during 30, 60 and 90 days.

Animal Husbandry:

The utensils used for milking can become grossly contaminated by bacteria on ancillary equipment which must also be cleaned and disinfected effectively.

Refrigerated bulk milk tanks can be cleaned either manually using cold or warm detergent/disinfectant solutions, or for the larger tanks, by automatic, programmed equipment.

In either case, cold water chlorinated (50 ppm) rinse proceeds and follows the washing solution. They should then be stored in the dairy to drain.

Pudukottai

SMS Advisory	For the next five days, Maximum temperature would be in the range of 37°C to 38°C and the minimum temperature would be between 26°C - 27°C. Partly cloudy sky will appear for the next five days. Wind is expected with the speed of 12 – 14 Kmph from, Northwest, West & Southwest directions.
--------------	---

General Advisory:

Extended range Forecast for next week (20th to 26th September 2024):

Rainfall:

As per extended range predictions, there is possibility of generally above normal rainfall likely over the district during 20th to 26th September 2024.

Maximum Temperature:

Maximum temperatures are likely to be near normal to generally above normal and are likely to be in the range 34°C to 38°C over the plains of the district during next week. 20th to 26th September 2024.

Minimum Temperature:

Minimum temperatures are likely to be near normal to slightly above normal and are likely to be in the range 24°C to 26°C over the district during next week 20th to 26th September 2024.

Agriculture:

There is a rise in maximum temperature for the forthcoming days, and due to this the soil moisture content may be reduced.

Hence, the horticultural farmers are advised to take up mulching around the root basin of the crop with dried leaves, grass and other farm wastes to retain the soil moisture content.

Due to hot and humid conditions, discomfort weather is likely at isolated pockets over the district on next two days (17.09.2024 & 18.09.2024). Hence farmers are advised to plan their field activities during morning and evening hours and avoid working in the field during 12 noon to 4 Pm. Stay safe and take care. Drink adequate water.

Weather Based Agro-Advisories: (Guava, Paddy & Animal Husbandry)

Guava:

Micronutrient deficiency is noticed in Guava fruit crops, due to this, the leaves become smaller, the spacing between the nodes decreases, the plants look like shrubs, the leaves turn pale and the edges look wilted.

The spraying of micronutrients controls the bronzing of leaves. A combined spray should be given containing ZnSo₄, MgSo₄, MnSo₄ @ 25gms, Borax @ 50gms and CuSO₄ and FeSO₄ @ 25grams with sticky agent @ 10ml per 10 litres of water.

Spray four times, once when new shoots appear and second, a month later, third and fourth times during the flowering and fruiting stages.

Paddy:

The incidence of Whorl maggot is expected in paddy. The symptoms show yellowish-white longitudinal marginal blotching with a hole.

Leaves shriveled plant, stunted and drooping of young leaves near the tip.

Remove the alternate hosts from the field, and apply the optimum recommendation of potash fertilizer.

To control spray Buprofezin @ 350 ml/acre.

Animal Husbandry:

The utensils used for milking can become grossly contaminated by bacteria on ancillary equipment which must also be cleaned and disinfected effectively.

Refrigerated bulk milk tanks can be cleaned either manually using cold or warm detergent/disinfectant solutions, or for the larger tanks, by automatic, programmed equipment.

In either case, cold water chlorinated (50 ppm) rinse proceeds and follows the washing solution. They should then be stored in the dairy to drain.

Ramanathapuram

SMS Advisory	For the next five days, Maximum temperature would be in the range of 36°C to 37°C and the minimum temperature would be between 27°C - 28°C. Partly cloudy sky will appear for the next five days. Wind is expected with the speed of 18 – 24 Kmph from, Southwest direction.
--------------	--

General Advisory:

Extended range Forecast for next week (20th to 26th September 2024):

Rainfall:

As per extended range predictions, there is possibility of near normal rainfall likely over the district during 20th to 26th September 2024.

Maximum Temperature:

Maximum temperatures are likely to be near normal to generally above normal and are likely to be in the range 34°C to 38°C over the plains of the district during next week. 20th to 26th September 2024.

Minimum Temperature:

Minimum temperatures are likely to be near normal to slightly above normal and are likely to be in the range 24°C to 26°C over the district during next week 20th to 26th September 2024.

Agriculture:

There is a rise in maximum temperature for the forthcoming days, and due to this the soil moisture content may be reduced.

Hence, the horticultural farmers are advised to take up mulching around the root basin of the crop with dried leaves, grass and other farm wastes to retain the soil moisture content.

Due to hot and humid conditions, discomfort weather is likely at isolated pockets over the district on next two days (17.09.2024 & 18.09.2024). Hence farmers are advised to plan their field activities during morning and evening hours and avoid working in the field during 12 noon to 4 Pm. Stay safe and take care. Drink adequate water.

Weather Based Agro-Advisories: (Paddy, Tomato & Animal Husbandry)

Paddy:

In case of rain fed direct seeding of paddy, the use of mechanized sowing facilitate the possibility of maintaining the proper depth, spacing and minimize the crop loss due to dry spell.

Tomato:

Application of Micronutrients to vegetable crops may give good results.

Farmers are advised to apply micronutrients to the vegetable crops through fertigation or foliar spray during the flowering to fruiting stage.

Animal Husbandry:

The utensils used for milking can become grossly contaminated by bacteria on ancillary equipment which must also be cleaned and disinfected effectively.

Refrigerated bulk milk tanks can be cleaned either manually using cold or warm detergent/disinfectant solutions, or for the larger tanks, by automatic, programmed equipment.

In either case, cold water chlorinated (50 ppm) rinse proceeds and follows the washing solution. They should then be stored in the dairy to drain.

Sivagangai

SMS Advisory	For the next five days, Maximum temperature would be in the range of 40°C to 41°C and the minimum temperature would be between 27°C - 28°C. Partly cloudy sky will appear for the next five days. Wind is expected with the speed of 12 – 14 Kmph from, Southwest direction.
--------------	--

General Advisory:

Extended range Forecast for next week (20 to 26th September 2024):

Rainfall:

As per extended range predictions, there is possibility of near normal rainfall likely over the district during 20th to 26th September 2024.

Maximum Temperature:

Maximum temperatures are likely to be near normal to generally above normal and are likely to be in the range 28°C to 32°C over the plains of the district during next week. 20th to 26th September 2024.

Minimum Temperature:

Minimum temperatures are likely to be near normal to slightly above normal and are likely to be in the range 20°C to 24°C over the district during next week 20th to 26th September 2024.

Agriculture:

There is a rise in maximum temperature for the forthcoming days, and due to this the soil moisture content may be reduced.

Hence, the horticultural farmers are advised to take up mulching around the root basin of the crop with dried leaves, grass and other farm wastes to retain the soil moisture content.

Due to hot and humid conditions, discomfort weather is likely at isolated pockets over the district on next two days (17.09.2024 & 18.09.2024). Hence farmers are advised to plan their field activities during morning and evening hours and avoid working in the field during 12 noon to 4 Pm. Stay safe and take care. Drink adequate water.

Weather Based Agro-Advisories: (Brinjal, Paddy & Animal Husbandry)

Brinjal:

The little leaf disease infestation is slightly found in Brinjal. The symptoms are a reduction in the size of leaves, Shortened petioles, excessive growth of branches general stunting of plants, conversion of floral parts into leafy structures, and rare fruiting.

Remove the infected plants and destroy them.

To control, foliar spray of 6ml Imidachlopride with 10ml Sticking agent per 10 litres of water.

Paddy:

The incense of Bacterial Leaf Blight is noticed in Paddy fields. It infects the paddy after 3-4 weeks of planting.

In paddy, water-soaked to yellowish stripes on leaf blades or starting at leaf tips then later increase in length and width with a wavy margin, lesions are seedling wilt, turn yellow to white as the disease advances. If the cut end of the leaf is kept in water it becomes turbid because of bacterial ooze.

To control this spray Neem oil 60 EC 3% (or) NSKE 5% or fresh cow dung extract 20% twice (starting from the initial appearance of the disease and another at fortnightly intervals) is recommended for the control of sheath rot, sheath blight, grain discolouration and bacterial blight.

Animal Husbandry:

The utensils used for milking can become grossly contaminated by bacteria on ancillary equipment which must also be cleaned and disinfected effectively.

Refrigerated bulk milk tanks can be cleaned either manually using cold or warm detergent/disinfectant solutions, or for the larger tanks, by automatic, programmed equipment.

In either case, cold water chlorinated (50 ppm) rinse proceeds and follows the washing solution. They should then be stored in the dairy to drain.

Theni

SMS Advisory	For the next five days, Maximum temperature would be in the range of 33°C to 34°C and the minimum temperature would be between 22°C - 23°C. Partly cloudy sky will appear for the next five days. Wind is expected with the speed of 10 – 12 Kmph from, West direction.
--------------	---

General Advisory:

Extended range Forecast for next week (20th to 26th September 2024):

Rainfall:

As per extended range predictions, there is possibility of near normal rainfall likely over the district during 20th to 26th September 2024

Maximum Temperature:

Maximum temperatures are likely to be near normal to generally above normal and are likely to be in the range 28°C to 32°C over the plains of the district during next week. 20th to 26th September 2024.

Minimum Temperature:

Minimum temperatures are likely to be near normal to slightly above normal and are likely to be in the range 20°C to 24°C over the district during next week 20th to 26th September 2024.

Agriculture:

There is a rise in maximum temperature for the forthcoming days, and due to this the soil moisture content may be reduced.

Hence, the horticultural farmers are advised to take up mulching around the root basin of the crop with dried leaves, grass and other farm wastes to retain the soil moisture content.

Due to hot and humid conditions, discomfort weather is likely at isolated pockets over the district on next two days (17.09.2024 & 18.09.2024). Hence farmers are advised to plan their field activities during morning and evening hours and avoid working in the field during 12 noon to 4 Pm. Stay safe and take care. Drink adequate water.

Weather Based Agro-Advisories: (Maize, Banana & Animal Husbandry)

Maize:

The application of micronutrients will rectify the nutrient deficiency in Maize Cultivation. Farmers who have planted maize recently can apply 5kg of Millet nutrient mixture or 10 Kg of ZnSo₄/acre.

Also, apply Farm Yard Manure along with 2kgs of Azosphirillum and 2kgs of Phosphobacteria per acre.

Banana:

To increase the soil fertility, conserve the soil moisture and control the weeds, farmers are requested to sow cowpea @ 8 kg / acre in between the rows of banana plant.

Animal Husbandry:

The utensils used for milking can become grossly contaminated by bacteria on ancillary equipment which must also be cleaned and disinfected effectively.

Refrigerated bulk milk tanks can be cleaned either manually using cold or warm detergent/disinfectant solutions, or for the larger tanks, by automatic, programmed equipment.

In either case, cold water chlorinated (50 ppm) rinse proceeds and follows the washing solution. They should then be stored in the dairy to drain.

Kanyakumari

AGRO ADVISORIES

S. N.	CROP	STAGES	ADVISORIES
1.	Horticultural crops.	Planting stage.	As 20 to 24 km / hr wind speed is anticipated, it is advised to provide staking to newly planted horticultural plants.
2.	Coconut	All stages	For the control of coconut rugose spiraling whitefly kindly avoid application of insecticides to encourage natural enemies and setting up of yellow sticky traps coated with castor oil @ 8/acre.
3.	Jasmine	Vegetative stages	Apply 10 g of Phorate granules near root zone and irrigate to control the nematode pest.
4.	Paddy	Panicle initiation and flowering	Irrigate the paddy field to a depth of 5 cm after disappearance of ponded water.
5.	Horticultural crops	All stages	Irrigation should be given to fruit trees, Spices, Vegetables and other horticultural crops.

SMS Advisory

Coconut: For nut bearing coconut, root feeding of TNAU coconut tonic @ 200 ml per tree.

Salem

WEATHER ADVISORY BULLETIN FOR LIVESTOCK, POULTRY AND AGRICULTURE

Livestock, Poultry & Crop	Stage	Weather advisory
Livestock	General	Ticks are considered as one of the economically important ectoparasites affecting the livestock. Tick infestations are usually more common during monsoon as microclimatic conditions (temperature, relative humidity) are favourable for breeding and survival of tick stages on the pasture. Besides causing direct injuries such as bite worry (irritation) and blood loss (0.5 – 2 ml / tick), they are involved in the transmission of various

		<p>diseases viz. Theileriosis, Babesiosis and Anaplasmosis.</p> <p>Traditionally, ticks are controlled through insecticide application by different methods. Insecticides viz. Cypermethrin / Deltamethrin is used at the concentration of 1 – 2ml / litre of water.</p> <p>Insecticides are applied by spraying, mopping and dipping depending upon the species of animals. It is important to note that animals must be allowed to take water to stomach full prior to insecticide application and it should be done during sunny part of the day.</p> <p>In addition, animal shed must be treated with insecticide at the concentration of 5 – 10 ml / litre of water. Insecticide Flumethrin is available in squeeze tube. It is applied on the dorsal aspect of the body from head to base of the tail as a line. Ivermectin is available as parenteral as well as oral formulation @ 0.2 mg / kg b.wt.</p> <p>Insecticide / Acaricide treatment should be repeated after 21 days of first application so that ticks can be controlled successfully. Cracks and crevices in the shed should be closed.</p>
Agro advisory from Krishi Vigyan Kendra, Namakkal		
Onion	Vegetative Stage	Onion growers are requested to apply each 4 kg of Trichoderma viride, Bacillus subtilis and VAM along with 200 kg of FYM in the root region of onion plant for an acre of land at 20 days interval up to 2 months after planting to improve the plant growth and prevent the basal rot incidence in onion.
Turmeric	Vegetative Stage	Turmeric growers are requested to apply urea @ 108.5 kg and potash @ 360.7 kg in five equal splits at 30, 60, 90, 120 and 150 days after planting as basal and top dressing. Also apply 150 kg super phosphate as basal dose / acre.
Banana	Vegetative Stage	Farmers are requested to apply banana shakthi @ 20 gram / litre of water along with lemon juice at 3, 5 & 7 month after planting to increase yield of banana.

Namakkal

WEATHER ADVISORY BULLETIN FOR LIVESTOCK, POULTRY AND AGRICULTURE

Livestock, Poultry & Crop	Stage	Weather advisory
Livestock	General	<p>Ticks are considered as one of the economically important ectoparasites affecting the livestock. Tick infestations are usually more common during monsoon as microclimatic conditions (temperature, relative humidity) are favourable for breeding and survival of tick stages on the pasture. Besides causing direct injuries such as bite worry (irritation) and blood loss (0.5 – 2 ml / tick), they are involved in the transmission of various diseases viz. Theileriosis, Babesiosis and Anaplasmosis.</p> <p>Traditionally, ticks are controlled through insecticide application by different methods. Insecticides viz. Cypermethrin / Deltamethrin is used at the concentration of 1 – 2ml / litre of water.</p> <p>Insecticides are applied by spraying, mopping and dipping depending upon the species of animals. It is important to note that animals must be allowed to take water to stomach full prior to insecticide application and it should be done during sunny part of the day.</p> <p>In addition, animal shed must be treated with insecticide at the concentration of 5 – 10</p>

		ml / litre of water. Insecticide Flumethrin is available in squeeze tube. It is applied on the dorsal aspect of the body from head to base of the tail as a line. Ivermectin is available as parenteral as well as oral formulation @ 0.2 mg / kg b.wt. Insecticide / Acaricide treatment should be repeated after 21 days of first application so that ticks can be controlled successfully. Cracks and crevices in the shed should be closed.
Agro advisory from Krishi Vigyan Kendra, Namakkal		
Onion	Vegetative Stage	Onion growers are requested to apply each 4 kg of Trichoderma viride, Bacillus subtilis and VAM along with 200 kg of FYM in the root region of onion plant for an acre of land at 20 days interval up to 2 months after planting to improve the plant growth and prevent the basal rot incidence in onion.
Turmeric	Vegetative Stage	Turmeric growers are requested to apply urea @ 108.5 kg and potash @ 360.7 kg in five equal splits at 30, 60, 90, 120 and 150 days after planting as basal and top dressing. Also apply 150 kg super phosphate as basal dose / acre.
Banana	Vegetative Stage	Farmers are requested to apply banana shakthi @ 20 gram / litre of water along with lemon juice at 3, 5 & 7 month after planting to increase yield of banana.

Dharmapuri

WEATHER ADVISORY BULLETIN FOR LIVESTOCK, POULTRY AND AGRICULTURE

Livestock, Poultry & Crop	Stage	Weather advisory
Livestock	General	<p>Ticks are considered as one of the economically important ectoparasites affecting the livestock. Tick infestations are usually more common during monsoon as microclimatic conditions (temperature, relative humidity) are favourable for breeding and survival of tick stages on the pasture. Besides causing direct injuries such as bite worry (irritation) and blood loss (0.5 – 2 ml / tick), they are involved in the transmission of various diseases viz. Theileriosis, Babesiosis and Anaplasmosis.</p> <p>Traditionally, ticks are controlled through insecticide application by different methods. Insecticides viz. Cypermethrin / Deltamethrin is used at the concentration of 1 – 2ml / litre of water.</p> <p>Insecticides are applied by spraying, mopping and dipping depending upon the species of animals. It is important to note that animals must be allowed to take water to stomach full prior to insecticide application and it should be done during sunny part of the day.</p> <p>In addition, animal shed must be treated with insecticide at the concentration of 5 – 10 ml / litre of water. Insecticide Flumethrin is available in squeeze tube. It is applied on the dorsal aspect of the body from head to base of the tail as a line. Ivermectin is available as parenteral as well as oral formulation @ 0.2 mg / kg b.wt.</p> <p>Insecticide / Acaricide treatment should be repeated after 21 days of first application so that ticks can be controlled successfully. Cracks and crevices in the shed should be closed.</p>

Agro advisory from Krishi Vigyan Kendra, Namakkal

Onion	Vegetative Stage	Onion growers are requested to apply each 4 kg of Trichoderma viride, Bacillus subtilis and VAM along with 200 kg of FYM in the root region of onion plant for an acre of land at 20 days interval up to 2 months after planting to improve the plant growth and prevent the basal rot incidence in onion.
Turmeric	Vegetative Stage	Turmeric growers are requested to apply urea @ 108.5 kg and potash @ 360.7 kg in five equal splits at 30, 60, 90, 120 and 150 days after planting as basal and top dressing. Also apply 150 kg super phosphate as basal dose / acre.
Banana	Vegetative Stage	Farmers are requested to apply banana shakthi @ 20 gram / litre of water along with lemon juice at 3, 5 & 7 month after planting to increase yield of banana.

Krishnagiri

WEATHER ADVISORY BULLETIN FOR LIVESTOCK, POULTRY AND AGRICULTURE

Livestock, Poultry & Crop	Stage	Weather advisory
Livestock	General	<p>Ticks are considered as one of the economically important ectoparasites affecting the livestock. Tick infestations are usually more common during monsoon as microclimatic conditions (temperature, relative humidity) are favourable for breeding and survival of tick stages on the pasture. Besides causing direct injuries such as bite worry (irritation) and blood loss (0.5 – 2 ml / tick), they are involved in the transmission of various diseases viz. Theileriosis, Babesiosis and Anaplasmosis.</p> <p>Traditionally, ticks are controlled through insecticide application by different methods. Insecticides viz. Cypermethrin / Deltamethrin is used at the concentration of 1 – 2ml / litre of water.</p> <p>Insecticides are applied by spraying, mopping and dipping depending upon the species of animals. It is important to note that animals must be allowed to take water to stomach full prior to insecticide application and it should be done during sunny part of the day.</p> <p>In addition, animal shed must be treated with insecticide at the concentration of 5 – 10 ml / litre of water. Insecticide Flumethrin is available in squeeze tube. It is applied on the dorsal aspect of the body from head to base of the tail as a line. Ivermectin is available as parenteral as well as oral formulation @ 0.2 mg / kg b.wt.</p> <p>Insecticide / Acaricide treatment should be repeated after 21 days of first application so that ticks can be controlled successfully. Cracks and crevices in the shed should be closed.</p>

Agro advisory from Krishi Vigyan Kendra, Namakkal

Onion	Vegetative Stage	Onion growers are requested to apply each 4 kg of Trichoderma viride, Bacillus subtilis and VAM along with 200 kg of FYM in the root region of onion plant for an acre of land at 20 days interval up to 2 months after planting to improve the plant growth and prevent the basal rot incidence in onion.
Turmeric	Vegetative Stage	Turmeric growers are requested to apply urea @ 108.5 kg and potash @ 360.7 kg in five equal splits at 30, 60, 90, 120 and 150 days after planting as basal and top dressing. Also apply 150 kg super phosphate as basal dose / acre.

Banana	Vegetative Stage	Farmers are requested to apply banana shakthi @ 20 gram / litre of water along with lemon juice at 3, 5 & 7 month after planting to increase yield of banana.
--------	------------------	---

Karaikal

Agro Advisory

Crop/livestock	Stage/Particulars	Agro Advisory
Rice	Variety	Medium duration rice varieties like ADT 38, ADT 39, ADT 46, CO 50, CO 52, TKM 13, TRY 3 and KCLR 2 may be adopted for ensuing late <i>Samba</i> or <i>Thaladi</i> season.
	Field preparation	For direct seeded rice, apply 50 kg of P ₂ O ₅ /ha as basally in the last plough and level the field to have uniform crop stand and provide shallow trenches (15 cm width) at an interval of 3 m all along the field to facilitate the draining of excess water in case of heavy rainfall at the early growth stage of rice.
	Dry seed treatment	Mix the seeds with Captan or Thiram 24 hrs before sowing @ 4g/kg of seed. This dry seed treatment gives protection to the seedlings up to 40 days from seedling disease such as blast and brown spot.
	Sowing	For direct seeded rice, sowing may be done upto 30 th September.
	Weed management	To manage weeds in nursery, apply pre-emergence herbicide Butachlor 50 EC @ 1.0 kg (a.i.)/ha on 8 DAS.
		To manage weeds in direct wet seeded rice, apply Pretilachlor + safener 30 EC @ 0.450 kg (a.i.)/ha at 3 days after sowing.
		To manage weeds in direct dry seeded rice, apply Pendimethalin 30 EC @ 1.0 kg (a.i.)/ha at 5 days after sowing.
Cattle	Vaccination	Before the onset of monsoon, animals may be vaccinated for Foot and Mouth Disease and Hemorrhagic Septicemia. Grazing animals that are drinking pond water should be dewormed
	Deworming	Grazing animals that are drinking pond water should be dewormed.
	Shed management	Repair cattle/goat/poultry shed before the rainy season and ensure the roof leak proof. Otherwise leaking of rain water in dirty sheds may increase in ammonia production and coccidiosis disease.
		Do patchwork to fill the cracks in the floor to prevent hoof rotting disease of goats.
	Paddy straw enriching	Urea enriched paddy straw can be prepared and used for cattle (To enrich 100 kg of paddy straw, dissolve 4 kg urea in 65 litres of water and sprinkle prepared urea solution over the paddy straw and cover it. After 21 days the urea treated paddy straw can be used for feeding).

SMS: Light rain is expected for next few days. Hence, postpone irrigation to crops.

Puducherry

Agro Advisory

Crop	Stage/ Particulars	Agro Advisory
Rice	Green algae	To avoid the growth of green algae in paddy fields, Copper Sulphate @ one Kg in muslin cloth may be placed in the outlet of bore water irrigated to the field.
Rice	Tillering stage	To manage rice stem borer, release parasitoid <i>Trichogramma japonicum</i> @1,00,000/ha at active tillering stage (37, 44 and 51 DAP) or Azadirachtin 0.03% @ 4 ml/l or cartaphydrochloride 50% SP @ 2g/l or flubendiamide 20 WG @ 0.25 g/l or thiamethoxam 25 WG @ 0.2 g/l.
Cassava	Vegetative stage	To manage cassava mosaic disease CMD in tapioca, spray 3% neem oil or methyl dematon 2ml/lit or Dimethoate 1ml/lit or Acetamiprid 0.3g/l.
Sugarcane	Vegetative stage	In Sugarcane, to manage mealy bug, spray Methyl Parathion 50 EC @ 2ml/l.
Jasmine	Budworm	To control budworm in Jasmine, collect and destroy the damaged buds with larvae. Use light trap to attract and kill the adult moths Spray NSKE 5% or malathion 50EC 2ml/lit
Cattle	Vaccination	Before the onset of monsoon, animals may be vaccinated for Foot and Mouth Disease and Hemorrhagic Septicemia. Grazing animals that are drinking pond water should be dewormed
	Deworming	Grazing animals that are drinking pond water should be dewormed.
	Shed management	Repair cattle/goat/poultry shed before the rainy season and ensure the roof leak proof. Otherwise leaking of rain water in dirty sheds may increase in ammonia production and coccidiosis disease.
		Do patchwork to fill the cracks in the floor to prevent hoof rotting disease of goats.
Paddy straw enriching	Urea enriched paddy straw can be prepared and used for cattle (To enrich 100 kg of paddy straw, dissolve 4 kg urea in 65 litres of water and sprinkle prepared urea solution over the paddy straw and cover it. After 21 days the urea treated paddy straw can be used for feeding).	

SMS: Dry weather is likely to prevail during next few days. Hence, farmers are advised to apply need based irrigation to crops.

=====